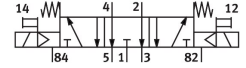


Solenoid valve

VUVS-L30-P53E-MD-G38-F8-1C1

Part number: 575632

FESTO



Data sheet

Feature	Value
Valve function	5/3 exhausted
Type of actuation	Electric
Valve size	31 mm
Standard nominal flow rate (standardised to DIN 1343)	1600 l/min
pneumatic working port	G3/8
Operating voltage	24V DC
Operating pressure	0.25 MPa...1 MPa 2.5 bar...10 bar
Design	Piston gate valve
Type of reset	Mechanical spring
Approval	c UL us - Recognized (OL)
Degree of protection	IP65 With plug socket To IEC 60529
Nominal size	8.1 mm
Exhaust-air function	With flow control option
Sealing principle	Soft
Mounting position	optional
Manual override	Detenting Non-detenting
Type of piloting	Pilot actuated
Pilot air supply	Internal
Flow direction	Non-reversible
lap	Overlap
b value	0.4
C value	7.1 l/sbar
Switching time off	74 ms
Switching time on	20 ms
Switching time reversal	36 ms
Duty cycle	100%
Max. positive test pulse with 0 signal	2000 µs
Max. negative test pulse with 1 signal	3600 µs

Feature	Value
Characteristic coil data	24 V DC: 3.3 W
Permissible voltage fluctuations	+/- 10 %
Operating medium	Compressed air to ISO 8573-1:2010 [7:4:4]
Note on operating and pilot medium	Lubricated operation possible (in which case lubricated operation will always be required)
Vibration resistance	Transport application test with severity level 2 to FN 942017-4 and EN 60068-2-6
Shock resistance	Shock test with severity level 2 to FN 942017-5 and EN 60068-2-27
Corrosion resistance class CRC	2 - Moderate corrosion stress
LABS (PWIS) conformity	VDMA24364-B1/B2-L
Cleanroom suitability, measured according to ISO 14644-14	Class 6 according to ISO 14644-1
Media temperature	-10 °C...60 °C
Pilot medium	Compressed air to ISO 8573-1:2010 [7:4:4]
Ambient temperature	-10 °C...60 °C
Product weight	562 g
Electrical connection	Type C To EN 175301-803
Type of mounting	Either: On manifold rail With through-hole
Breather connection	Not ducted
Pilot exhaust port 82	M5
Pilot exhaust port 84	M5
Pneumatic connection, port 1	G3/8
Pneumatic connection, port 2	G3/8
Pneumatic connection, port 3	G3/8
Pneumatic connection, port 4	G3/8
Pneumatic connection, port 5	G3/8
Note on materials	RoHS-compliant
Material seals	HNBR NBR
Material housing	Die-cast aluminium Painted
Material piston slide	Wrought aluminium alloy
Material screws	Nickel-plated steel