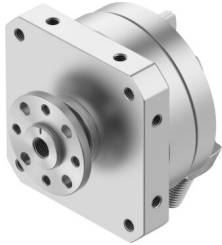


Semi-rotary drive DSM-25-270-P1-FW-A-B

Part number: 566208

FESTO



Data sheet

Feature	Value
Size	25
Cushioning angle	7.5 deg
Rotation angle adjustment range	0 deg...246 deg
Swivel angle	0 deg...246 deg
Permissible stop radius	21 mm
Cushioning	Elastic cushioning rings/pads at both ends with fixed stop
Mounting position	optional
Fine adjustment	-6 deg
Mode of operation	Double-acting
Design	Vane
Position detection	Via proximity switch
Operating pressure	0.15 MPa...1 MPa 1.5 bar...10 bar
Max. swivel frequency at 0.6 MPa (6 bar, 87 psi)	2 Hz
Repetition accuracy	0.1 deg
Operating medium	Compressed air to ISO 8573-1:2010 [7:-:-]
Note on operating and pilot medium	Lubricated operation possible (in which case lubricated operation will always be required)
Corrosion resistance class CRC	0 - No corrosion stress
LABS (PWIS) conformity	VDMA24364-B1/B2-L
Ambient temperature	-10 °C...60 °C
Max. stop force	320 N
Max. axial force	50 N
Max. radial force	120 N
Theoretical torque at 0.6 MPa (6 bar, 87 psi)	5 Nm
Permissible mass moment of inertia	0.045 kgm ²
Product weight	740 g
Type of mounting	Via female thread
Pneumatic connection	M5
Note on materials	RoHS-compliant
Material drive shaft	Steel Nickel-plated

Feature	Value
Material seals	TPE-U(PU)
Material housing	Wrought aluminium alloy