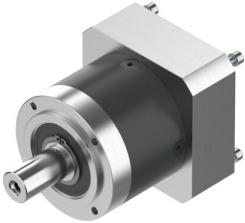


# Gear unit EMGA-80-P-G3-SST-87

Part number: 549432

FESTO



## Data sheet

Feature	Value
Gear unit flange size	80 mm
Motor flange size	87 mm
Torsional backlash	0.12 deg
Type of gear unit	Planetary gear
Gear unit ratio	3:1
Max. drive speed	7000 rpm
Operating temperature of gear unit	-25 °C...90 °C
LABS (PWIS) conformity	VDMA24364-B2-L
Degree of protection	IP54
Continuous output torque	85 Nm
Mass moment of inertia of gear unit	0.77 kgcm <sup>2</sup>
Max. output torque	136 Nm
Max. efficiency	98 %
Torsional rigidity	6 Nm/arcmin
Product weight	2100 g
Permissible axial shaft load	1000 N
Permissible radial shaft load	750 N
Gear unit interface, output shaft	80G
Gear unit interface, drive shaft	87A
Note on materials	RoHS-compliant