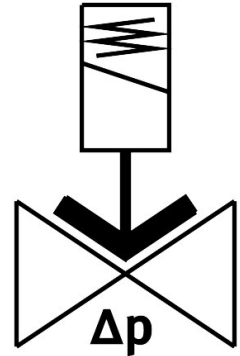
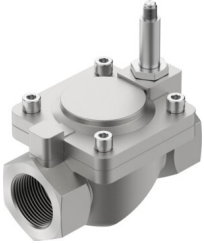


# Solenoid valve

## VZWM-L-M22C-G114-F5-R1

Part number: 546167

FESTO



## Data sheet

Feature	Value
Design	Diaphragm valve servo-controlled
Type of actuation	Electric
Sealing principle	Soft
Mounting position	Preferably vertical
Type of mounting	In-line installation
Connection Process valve	G1 1/4
Electrical connection	Solenoid coil type MH-... , coil can be ordered as an accessory
Nominal size	40 mm
Valve function	2/2-way, closed, monostable
Flow direction	Non-reversible
Medium	Compressed air to ISO 8573-1:2010 [7:4:4] Inert gases Water Neutral fluids
Medium pressure, valve for liquid media	0.07 MPa...0.6 MPa 0.7 bar...6 bar 10.15 psi...87 psi
Medium pressure, valve for gaseous media	0.07 MPa...1 MPa 0.7 bar...10 bar 10.15 psi...145 psi
Burst pressure	4 MPa 40 bar 580 psi
Overload pressure	4 MPa 40 bar 580 psi
Pressure difference	0.07 MPa 0.7 bar 10.15 psi

<b>Feature</b>	<b>Value</b>
Type of piloting	Pilot actuated
Max. viscosity	22 mm <sup>2</sup> /s
Media temperature	-10 °C...60 °C
Media temperature for fluids	5 °C...50 °C
Ambient temperature	-10 °C...60 °C
Flow rate Kv	21.3 m <sup>3</sup> /h
Standard nominal flow rate (standardised to DIN 1343)	24000 l/min
Switching time on	26 ms
Switch-on time for fluids	1400 ms
Switching time off	20 ms
Switch-off time for fluids	1900 ms
b value	0.6
C value	75 l/sbar
Note on materials	RoHS-compliant
LABS (PWIS) conformity	VDMA24364 zone III
Material housing	Stainless steel casting
Material number housing	1.4581
Material seals	NBR
Material plunger tube	High-alloy steel
Product weight	2650 g
CE mark (see declaration of conformity)	In accordance with EU Pressure Equipment Directive
UKCA marking (see declaration of conformity)	to UK Pressure Equipment Regulations
Corrosion resistance class CRC	3 - high corrosion stress
Max. tightening torque for cover screw	30 Nm
Max. tightening torque for connecting thread	450 Nm
Max. tightening torque for coil fastening	2 Nm