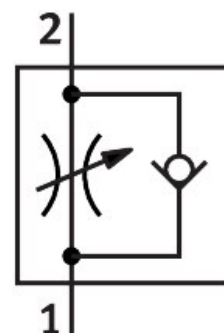


One-way flow control valve GRLA-1/8-QB-5/32-U

Part number: 534656

FESTO



Data sheet

Feature	Value
Valve function	Exhaust air one-way flow control function
Pneumatic connection, port 1	QB-5/32
Pneumatic connection, port 2	1/8 NPT
Type of actuation	Manual
Adjustment component	Slotted head screw
Type of mounting	Screw-in Via male thread
Standard nominal flow rate in flow control direction	33.9 cfm
Standard nominal flow rate in blocked direction	26.2 cfm...34.6 cfm
Ambient temperature	32 °F...140 °F
Mounting position	optional
Operating pressure complete temperature range	-13.8 psi...116 psi
Standard flow rate in flow control direction 0.6->0 MPa (6->0 bar, 87->0 psi)	51.6 cfm
Standard flow rate in non-return direction 0.6->0 MPa (6->0 bar, 87->0 psi)	51.2 cfm...53.4 cfm
Operating medium	Compressed air to ISO 8573-1:2010 [7:4:4]
Note on operating and pilot medium	Lubricated operation possible (in which case lubricated operation will always be required)
LABS (PWIS) conformity	VDMA24364 zone III
Media temperature	32 °F...140 °F
Max. tightening torque	5.2 ft-lbf
Product weight	0.66 oz
Material screwed plug	Brass Nickel-plated
Note on materials	RoHS-compliant
Material seals	NBR

Feature	Value
Material hollow bolt	Brass Nickel-plated
Material release ring	POM
Material knurled head	Brass Nickel-plated
Material adjusting screw	Brass Nickel-plated
Material swivel fitting	PBT-reinforced