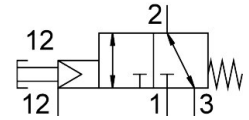


# Pushbutton valve VHEF-PTCZ-M32-M-N14

Part number: 5299724

**FESTO**



## Data sheet

Feature	Value
Valve function	3/2-way, monostable, open/closed
Type of actuation	Manual
Construction width	20 mm
Standard nominal flow rate (standardised to DIN 1343)	870 l/min
pneumatic working port	1/4 NPT
Operating pressure	-0.095 MPa...1 MPa -0.95 bar...10 bar
Design	Poppet seat
Type of reset	Mechanical spring
Nominal size	6 mm
Exhaust-air function	With flow control option
Instructions on use	Actuate manually only
Sealing principle	Soft
Mounting position	optional
Type of piloting	Pilot actuated
Pilot air supply	External
Flow direction	Reversible
lap	Zero overlap
Pilot pressure	0.3 MPa...1 MPa 3 bar...10 bar 43.5 psi...145 psi
Max. switching frequency	0.5 Hz
Explosion protection	Zone 1 (ATEX) Zone 2 (ATEX) Zone 21 (ATEX) Zone 22 (ATEX)
Operating medium	Compressed air to ISO 8573-1:2010 [7:-:-]
Note on operating and pilot medium	Lubricated operation possible (in which case lubricated operation will always be required)
Corrosion resistance class CRC	1 - Low corrosion stress
LABS (PWIS) conformity	VDMA24364-B1/B2-L
Media temperature	-10 °C...60 °C
Ambient temperature	-10 °C...60 °C

<b>Feature</b>	<b>Value</b>
Actuating force	24.5 N
Product weight	161 g
Type of mounting	Either: Front panel mounting With through-hole
Pilot air port 12/14	M5
Pilot air port 12	M5
Pneumatic connection, port 1	1/4 NPT
Pneumatic connection, port 2	1/4 NPT
Pneumatic connection, port 3	1/4 NPT
Note on materials	RoHS-compliant
Material cover	PA-reinforced
Material seals	NBR
Material housing	Anodised wrought aluminium alloy