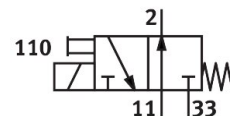
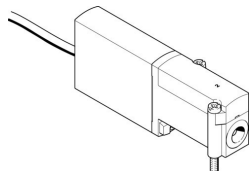


Solenoid valve

MHA4-M1H-3/20-4-K

Part number: 525196

FESTO



Data sheet

| Feature | Value |
|---|--|
| Valve function | 3/2 open, monostable |
| Type of actuation | Electric |
| Construction width | 18 mm |
| Standard nominal flow rate (standardised to DIN 1343) | 400 l/min |
| pneumatic working port | Sub-base |
| Operating voltage | 24V DC |
| Operating pressure | -0.09 MPa...0.8 MPa -0.9 bar...8 bar -13.05 psi...116 psi |
| Design | Pressure-relieved poppet valve |
| Type of reset | Mechanical spring |
| Degree of protection | IP65 |
| Approval | c UL us - Recognized (OL) |
| Nominal size | 4 mm |
| Grid dimension | 24 mm |
| Note on grid dimension | Minimum distance between the valves is 6 mm |
| Exhaust-air function | With flow control option |
| Sealing principle | Soft |
| Mounting position | optional |
| Manual override | Non-detenting |
| Type of piloting | Direct |
| Flow direction | Reversible with restrictions |
| lap | Underlap |
| Operating pressure, reversible | -0.09 MPa...0.1 MPa -0.9 bar...1 bar -13.05 psi...14.5 psi |
| Max. switching frequency | 120 Hz |
| Switching time off | 5 ms |
| Switching time on | 10.5 ms |
| Duty cycle | 100% |
| Characteristic coil data | 24 V DC: 5.6 W |
| Permissible voltage fluctuations | +/- 10 % |

| Feature | Value |
|---|--|
| Operating medium | Compressed air to ISO 8573-1:2010 [7:4:4] |
| Note on operating and pilot medium | Lubricated operation possible (in which case lubricated operation will always be required) |
| Vibration resistance | Transport application test with severity level 2 to FN 942017-4 and EN 60068-2-6 |
| Shock resistance | Shock test with severity level 2 to FN 942017-5 and EN 60068-2-27 |
| Corrosion resistance class CRC | 2 - Moderate corrosion stress |
| LABS (PWIS) conformity | VDMA24364-B1/B2-L |
| Cleanroom suitability, measured according to ISO 14644-14 | Class 6 according to ISO 14644-1 |
| Media temperature | -5 °C...40 °C |
| Ambient temperature | -5 °C...40 °C |
| Product weight | 270 g |
| Electrical connection | Cable |
| Cable length | 2.5 m |
| Type of mounting | On PR rail |
| Pneumatic connection, port 11 | Sub-base |
| Pneumatic connection, port 2 | Sub-base |
| Pneumatic port 33 | Sub-base |
| Note on materials | RoHS-compliant |
| Material seals | HNBR NBR |
| Material housing | Die-cast zinc, coated |
| Material cable sheath | PUR |
| Material screws | Galvanised steel |