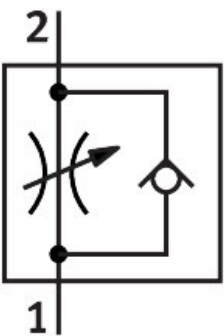
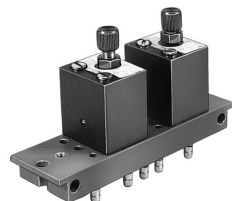


One-way flow control valve GRF-PK-3X2

Part number: 4566

FESTO



Data sheet

Feature	Value
Valve function	One-way flow control function
Pneumatic connection, port 1	PK-3
Pneumatic connection, port 2	PK-3
Adjustment component	Knurled screw
Type of mounting	With through-hole
Standard nominal flow rate in flow control direction	45 l/min
Standard nominal flow rate in blocked direction	45 l/min
Operating pressure	0.5 bar...8 bar
Ambient temperature	-10 °C...60 °C
Material housing	Wrought aluminium alloy
Mounting position	optional
Operating medium	Compressed air to ISO 8573-1:2010 [7:::]
Note on operating and pilot medium	Lubricated operation possible (in which case lubricated operation will always be required)
LABS (PWIS) conformity	VDMA24364-B1/B2-L
Media temperature	-10 °C...60 °C
Product weight	145 g
Material adjusting screw	Brass