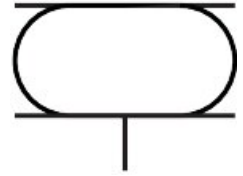


Bellows cylinder EB-80-45

Part number: 2748904

FESTO



Data sheet

| Feature | Value |
|------------------------------------|--|
| Size | 80 |
| Required installation diameter | 95 mm |
| Stroke | 45 mm |
| Max. extended height | 110 mm |
| Max. angle of inclination | 15 deg |
| Max. offset | 10 mm |
| Min. installation height | 65 mm |
| Mode of operation | Single-acting |
| Operating pressure | 0 bar...8 bar |
| Operating medium | Compressed air to ISO 8573-1:2010 [:-:4] |
| Note on operating and pilot medium | Lubricated operation not possible |
| Corrosion resistance class CRC | 0 - No corrosion stress |
| LABS (PWIS) conformity | VDMA24364-B1/B2-L |
| Ambient temperature | -40 °C...70 °C |
| Reset force | 200 N |
| Product weight | 500 g |
| Type of mounting | Via female thread |
| Pneumatic connection | G1/4 |
| Note on materials | RoHS-compliant |
| Material bellows | CR |
| Material housing | Die-cast aluminium |