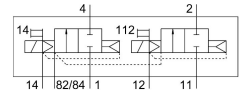
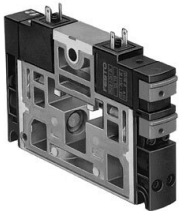


# Solenoid valve

## CPV18-M1H-2X2-GLS-1/4

Part number: 185886

**FESTO**



## Data sheet

Feature	Value
Valve function	2x2/2-way, monostable, closed
Type of actuation	Electric
Valve size	18 mm
Standard nominal flow rate (standardised to DIN 1343)	1600 l/min
pneumatic working port	G1/4
Operating voltage	24V DC
Operating pressure	-0.09 MPa...1 MPa -0.9 bar...10 bar
Design	Piston gate valve
Type of reset	Pneumatic spring
Approval	C-Tick
Degree of protection	IP65
Nominal size	8 mm
Exhaust-air function	Without flow control option
Sealing principle	Soft
Mounting position	optional
Manual override	Detenting Non-detenting
Type of piloting	Pilot actuated
Pilot air supply	External Internal
Flow direction	Non-reversible
lap	Overlap
Pilot pressure	0.3 MPa...0.8 MPa 3 bar...8 bar
b value	0.41
C value	6.3 l/sbar
Switching time off	20 ms
Switching time on	14 ms
Duty cycle	100%
Electrical power consumption	1.5 W
Operating medium	Compressed air to ISO 8573-1:2010 [7:4:4]

Feature	Value
Note on operating and pilot medium	Lubricated operation possible (in which case lubricated operation will always be required)
Corrosion resistance class CRC	2 - Moderate corrosion stress
LABS (PWIS) conformity	VDMA24364-B1/B2-L
Storage temperature	-20 °C...40 °C
Media temperature	-5 °C...50 °C
Ambient temperature	-5 °C...50 °C
Product weight	260 g
Type of mounting	With through-hole
Pilot air port 12/14	Common line
Pilot exhaust port 82/84	Common line
Pneumatic connection, port 1	Common line
Pneumatic connection, port 11	Common line
Pneumatic connection, port 2	G1/4
Pneumatic connection 3/5 combined	Common line
Pneumatic connection, port 4	G1/4
Note on materials	RoHS-compliant
Material seals	HNBR NBR
Material housing	Die-cast aluminium Brass POM PPS Steel