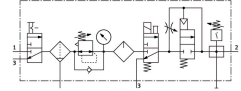


Service unit combination FRC-3/4-D-MAXI-KF

Part number: 185849

FESTO



Data sheet

| Feature | Value |
|---|---|
| Size | Maxi |
| Series | D |
| Actuator lock | Rotary knob with detent |
| Mounting position | Vertical +/- 5° |
| Grade of filtration | 40 µm |
| Condensate drain | Manually rotating |
| Design | Branching module Pressure switch On/off valve Filter regulator with pressure gauge Proportional standard mist lubricator Safety start-up valve |
| Max. condensate volume | 80 cm ³ |
| Bowl guard | Metal bowl guard |
| Pressure gauge (ANALOG) or Pressure display (DIGITAL) | With pressure gauge |
| Operating pressure | 0.3 MPa...1.6 MPa 3 bar...16 bar 43.5 psi...232 psi |
| Pressure regulation range | 0.25 MPa...1.2 MPa 2.5 bar...12 bar 36.25 psi...174 psi |
| Max. pressure hysteresis | 0.025 MPa 0.25 bar 3.625 psi |
| Standard nominal flow rate (standardised to DIN 1343) | 3700 l/min |
| Operating medium | Compressed air to ISO 8573-1:2010 [-:-:-] Inert gases |
| Corrosion resistance class CRC | 2 - Moderate corrosion stress |
| LABS (PWIS) conformity | VDMA24364-B1/B2-L |
| Air purity class at output | Compressed air to ISO 8573-1:2010 [7:4:-] Inert gases |
| Media temperature | -10 °C...60 °C |
| Ambient temperature | -10 °C...60 °C |
| Product weight | 6300 g |

| Feature | Value |
|------------------------------|---|
| Type of mounting | Either: In-line installation With accessories |
| Pneumatic connection, port 1 | G3/4 |
| Pneumatic connection, port 2 | G3/4 |
| Material housing | Die-cast zinc |
| Material bowl | PC |