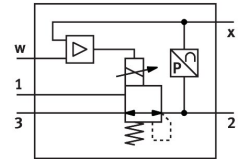


Proportional-pressure regulator VPPL-3L-3-G14-0L20H-A4-A-S1-6

Part number: 1635992

FESTO



Data sheet

| Feature | Value |
|---|---|
| Nominal size, supply | 3 mm |
| Nominal size, exhaust | 3 mm |
| Type of actuation | Electric |
| Sealing principle | Soft |
| Mounting position | optional Preferably vertical |
| Design | Directly actuated piston regulator |
| Short circuit current rating | no |
| Max. cable length | 30 m |
| Safety instructions | Safety position VPPL: if the power supply cable is interrupted, the output pressure drops to 0 bar. |
| Reverse polarity protection | For all electrical connections |
| Type of reset | Mechanical spring |
| Type of piloting | Direct |
| Valve function | 3-way proportional-pressure regulator, closed |
| Display type | LED indicator |
| Operating pressure | 2 MPa 20 bar |
| Pressure regulation range | 0.02 MPa...2 MPa 0.2 bar...20 bar |
| Inlet pressure 1 | 0 bar...50 bar 0 MPa...5 MPa |
| Max. pressure hysteresis | 0.01 MPa 0.1 bar 1.45 psi |
| b value | 0.25 |
| C value | 0.8 l/sbar |
| Standard nominal flow rate (standardised to DIN 1343) | 245 l/min |
| Standard nominal flow rate 2-3 | 282 l/min |
| Switching time off | 654 ms |
| Switching time on | 428 ms |
| Operational voltage range DC | 21.6 V...27.6 V |
| Duty cycle | 100% |

| Feature | Value |
|--|--|
| Max. electrical power consumption | 26.7 W |
| Residual ripple | 10 % |
| Signal range analogue output | 4 - 20 mA |
| Signal range analogue input | 4 - 20 mA |
| SETPOINT/ACTUAL values | Current type 4-20 mA |
| Operating medium | Compressed air to ISO 8573-1:2010 [7:4:4] Inert gases |
| Note on operating and pilot medium | Lubricated operation not possible |
| Approval | c UL us listed (OL) |
| KC mark | KC-EMV |
| CE mark (see declaration of conformity) | To EU EMC Directive |
| UKCA marking (see declaration of conformity) | To UK instructions for EMC |
| Corrosion resistance class CRC | 2 - Moderate corrosion stress |
| LABS (PWIS) conformity | VDMA24364 zone III |
| Media temperature | 5 °C...50 °C |
| Degree of protection | IP65 |
| Ambient temperature | 5 °C...50 °C |
| Storage temperature | -10 °C...60 °C |
| Product weight | 1100 g |
| Linearity error in ± %FS | 0.5 %FS |
| Total accuracy | 0.5% FS |
| Temperature coefficient | 0.04 %/K |
| Repetition accuracy in ± %FS | 0.5 %FS |
| Electrical connection diagnostics interface | Socket, M12, 5-pin, A-coded |
| Electrical connection, IN | Plug connector, M12, 5-pin, A-coded |
| Electrical connection, OUT | Plug connector, M12, 5-pin, A-coded |
| Type of mounting | With through-hole |
| Pneumatic connection, port 1 | G1/4 |
| Pneumatic connection, port 2 | G1/4 |
| Pneumatic connection, port 3 | G1/4 |
| Note on materials | RoHS-compliant |
| Material housing | Anodised wrought aluminium alloy |