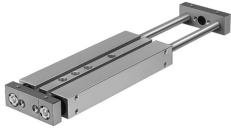


# Twin cylinder DPZJ-32-25-P-A-KF-S2

Part number: 162153

FESTO



## Data sheet

| Feature  | Value  |
|--|--|
| Stroke   | 25 mm  |
| Adjustable end-position range/length                         | 10 mm  |
| Piston diameter  | 32 mm  |
| Operating mode, drive unit                                   | Yoke   |
| Cushioning   | Elastic cushioning rings/plates at both ends   |
| Mounting position  | optional   |
| Guide  | Recirculating ball bearing guide   |
| Design   | Guidance   |
| Position detection   | Via proximity switch   |
| Variants   | Through piston rod   |
| Operating pressure   | 0.1 MPa...1 MPa<br>1 bar...10 bar  |
| Max. speed   | 1 m/s  |
| Mode of operation  | Double-acting  |
| Operating medium   | Compressed air to ISO 8573-1:2010 [7:4:4]  |
| Note on operating and pilot medium                           | Lubricated operation possible (in which case lubricated operation will always be required) |
| Corrosion resistance class CRC                               | 0 - No corrosion stress  |
| LABS (PWIS) conformity                                       | VDMA24364-B1/B2-L  |
| Ambient temperature  | -20 °C...80 °C   |
| Impact energy in end positions                               | 0.5 Nm   |
| Theoretical force at 0.6 MPa (6 bar, 87 psi), return stroke  | 724 N  |
| Theoretical force at 0.6 MPa (6 bar, 87 psi), advance stroke | 724 N  |
| alternative connections                                      | See product drawing  |
| Pneumatic connection   | G1/8   |
| Material cover   | Wrought aluminium alloy  |
| Material seals   | NBR  |
| Material housing   | Wrought aluminium alloy  |
| Material piston rod  | Case-hardened steel  |