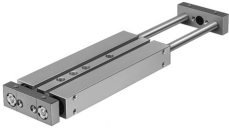


Twin cylinder DPZJ-20-50-P-A-KF-S2

Part number: 162085

FESTO



Data sheet

| Feature | Value |
|--|--|
| Stroke | 50 mm |
| Adjustable end-position range/length | 10 mm |
| Piston diameter | 20 mm |
| Operating mode, drive unit | Yoke |
| Cushioning | Elastic cushioning rings/plates at both ends |
| Mounting position | optional |
| Guide | Recirculating ball bearing guide |
| Design | Guidance |
| Position detection | Via proximity switch |
| Variants | Through piston rod |
| Operating pressure | 0.1 MPa...1 MPa 1 bar...10 bar |
| Max. speed | 1 m/s |
| Mode of operation | Double-acting |
| Operating medium | Compressed air to ISO 8573-1:2010 [7:4:4] |
| Note on operating and pilot medium | Lubricated operation possible (in which case lubricated operation will always be required) |
| Corrosion resistance class CRC | 0 - No corrosion stress |
| LABS (PWIS) conformity | VDMA24364-B1/B2-L |
| Ambient temperature | -20 °C...80 °C |
| Impact energy in end positions | 0.2 Nm |
| Theoretical force at 0.6 MPa (6 bar, 87 psi), return stroke | 282 N |
| Theoretical force at 0.6 MPa (6 bar, 87 psi), advance stroke | 282 N |
| alternative connections | See product drawing |
| Pneumatic connection | M5 |
| Material cover | Wrought aluminium alloy |
| Material seals | NBR |
| Material housing | Wrought aluminium alloy |
| Material piston rod | Case-hardened steel |