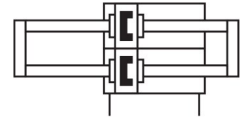
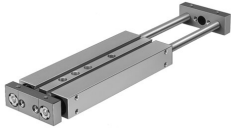


# Twin cylinder DPZJ-20-10-P-A-S2

Part number: 159952

FESTO



## Data sheet

Feature	Value
Stroke	10 mm
Adjustable end-position range/length	10 mm
Piston diameter	20 mm
Operating mode, drive unit	Yoke
Cushioning	Elastic cushioning rings/plates at both ends
Mounting position	optional
Guide	Plain-bearing guide
Design	Guidance
Position detection	Via proximity switch
Variants	Through piston rod
Operating pressure	0.1 MPa...1 MPa 1 bar...10 bar
Max. speed	1 m/s
Mode of operation	Double-acting
Operating medium	Compressed air to ISO 8573-1:2010 [7:4:4]
Note on operating and pilot medium	Lubricated operation possible (in which case lubricated operation will always be required)
Corrosion resistance class CRC	2 - Moderate corrosion stress
LABS (PWIS) conformity	VDMA24364-B1/B2-L
Ambient temperature	-20 °C...80 °C
Impact energy in end positions	0.2 Nm
Theoretical force at 0.6 MPa (6 bar, 87 psi), return stroke	282 N
Theoretical force at 0.6 MPa (6 bar, 87 psi), advance stroke	282 N
alternative connections	See product drawing
Pneumatic connection	M5
Material cover	Wrought aluminium alloy
Material seals	NBR
Material housing	Wrought aluminium alloy
Material piston rod	High-alloy stainless steel