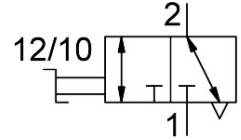


Shut-off valve HE-3-3/8-QS-3/8-U

Part number: 153987

FESTO



Data sheet

Feature	Value
Valve function	3/2 bistable
Selection of additional functions	With exhaust function
Pneumatic connection, port 1	3/8 NPT
Pneumatic connection, port 2	QS-3/8
Type of actuation	Manual
Type of mounting	Either: Direct mounting via through-hole Direct mounting via thread
Standard nominal flow rate (standardised to DIN 1343)	744.3 l/min
Nominal size	4.6 mm
Operating pressure	-0.095 MPa...1 MPa -0.95 bar...10 bar
Ambient temperature	0 °C...60 °C
Material housing	PBT-reinforced
Operating medium	Compressed air to ISO 8573-1:2010 [7:-:-]
Exhaust-air function	Without flow control option
Sealing principle	Soft
Mounting position	optional
Design	Piston gate valve
Type of piloting	Direct
Flow direction	Non-reversible
Note on operating and pilot medium	Lubricated operation possible (in which case lubricated operation will always be required)
Corrosion resistance class CRC	2 - Moderate corrosion stress
LABS (PWIS) conformity	VDMA24364-B1/B2-L
Cleanroom suitability, measured according to ISO 14644-14	Class 4 according to ISO 14644-1
Media temperature	0 °C...60 °C
Product weight	62 g
Pneumatic connection, port 3	Not ducted
Material screwed plug	Nickel-plated brass
Note on materials	RoHS-compliant
Material seals	NBR