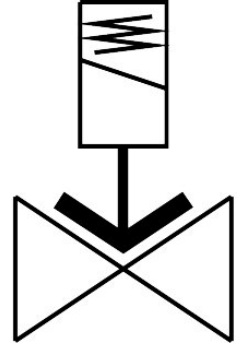


# Solenoid valve

## VZWF-B-L-M22C-N38-135-E-3AP4-10-R1

FESTO

Part number: 1492375



## Data sheet

| Feature                          | Value  |
|----------------------------------|--|
| Design                           | Diaphragm valve<br>Force pilot operated  |
| Type of actuation                | Electric   |
| Sealing principle                | Soft   |
| Mounting position                | Solenoid vertical  |
| Type of mounting                 | In-line installation   |
| Connection Process valve         | 3/8 NPT  |
| Electrical connection            | Type A<br>Plugs<br>To EN 175301-803<br>Square design   |
| Nominal size                     | 13.5 mm  |
| Valve function                   | 2/2-way, closed, monostable  |
| Manual override                  | None   |
| Flow direction                   | Non-reversible   |
| Medium                           | Compressed air to ISO 8573-1:2010 [7:--:]<br>Inert gases<br>Mineral oil<br>Water<br>Neutral fluids<br>Other media on request |
| Nominal pressure PN              | 40   |
| Pressure difference              | 0 MPa<br>0 bar<br>0 psi  |
| Characteristic coil data         | 230 V AC: 50/60 Hz, pick-up power 18.0 VA, holding power 15.0 VA   |
| Permissible voltage fluctuations | +/- 10 %   |
| Medium pressure                  | 0 MPa...1 MPa<br>0 bar...10 bar<br>0 psi...145 psi   |

| Feature   | Value                                      |
|---|--|
| Max. viscosity  | 22 mm <sup>2</sup> /s                      |
| Media temperature                                     | -10 °C...80 °C                             |
| Ambient temperature                                   | -10 °C...35 °C                             |
| Leakage rate to EN 12266-1                            | A  |
| Flow rate Kv  | 2.2 m <sup>3</sup> /h                      |
| Standard nominal flow rate (standardised to DIN 1343) | 2350 l/min                                 |
| Switching time on                                     | 130 ms                                     |
| Switching time off                                    | 180 ms                                     |
| Note on materials                                     | RoHS-compliant                             |
| LABS (PWIS) conformity                                | VDMA24364 zone III                         |
| Material housing                                      | Stainless steel casting                    |
| Material number housing                               | 1.4581                                     |
| Material seals  | EPDM                                       |
| Material screws                                       | High-alloy stainless steel                 |
| Material number screw                                 | 1.4301                                     |
| Product weight  | 1000 g                                     |
| CE mark (see declaration of conformity)               | To EU Low Voltage Directive                |
| UKCA marking (see declaration of conformity)          | To UK regulations for electrical equipment |
| Degree of protection                                  | IP65                                       |
| Corrosion resistance class CRC                        | 3 - high corrosion stress                  |