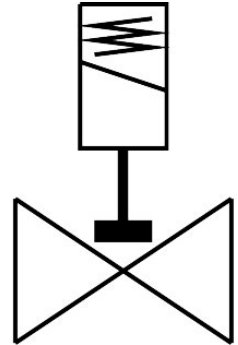


Solenoid valve

VZWD-L-M22C-M-G18-25-V-3AP4-22-R1

FESTO

Part number: 1492007



Data sheet

| Feature | Value |
|----------------------------------|--|
| Design | Directly actuated poppet valve |
| Type of actuation | Electric |
| Sealing principle | Soft |
| Mounting position | optional |
| Type of mounting | In-line installation |
| Connection Process valve | G1/8 |
| Electrical connection | Type A Plugs To EN 175301-803 Square design |
| Nominal size | 2.5 mm |
| Valve function | 2/2-way, closed, monostable |
| Manual override | None |
| Flow direction | Non-reversible |
| Medium | Compressed air to ISO 8573-1:2010 [7:4:4] Inert gases Mineral oil Water Neutral fluids Other media on request |
| Nominal pressure PN | 100 |
| Pressure difference | 0 MPa 0 bar 0 psi |
| Characteristic coil data | 230 V AC: 50/60 Hz, pick-up power 18.0 VA, holding power 15.0 VA |
| Insulation material class | F |
| Permissible voltage fluctuations | +/- 10 % |
| Duty cycle | 100% |
| Type of reset | Mechanical spring |

| Feature | Value |
|---|--|
| Type of piloting | Direct |
| Medium pressure | 0 MPa...2.2 MPa 0 bar...22 bar 0 psi...319 psi |
| Max. viscosity | 22 mm ² /s |
| Media temperature | -10 °C...80 °C |
| Ambient temperature | -10 °C...35 °C |
| Leakage rate to EN 12266-1 | A |
| Flow rate Kv | 0.16 m ³ /h |
| Standard nominal flow rate (standardised to DIN 1343) | 170 l/min |
| Switching time on | 20 ms |
| Switching time off | 18 ms |
| Note on materials | RoHS-compliant |
| LABS (PWIS) conformity | VDMA24364 zone III |
| Material housing | High-alloy stainless steel |
| Material number housing | 1.4305 |
| Material seals | FPM |
| Material plunger tube | High-alloy steel |
| Product weight | 500 g |
| CE mark (see declaration of conformity) | To EU Low Voltage Directive |
| UKCA marking (see declaration of conformity) | To UK regulations for electrical equipment |
| Degree of protection | IP65 |
| Corrosion resistance class CRC | 3 - high corrosion stress |
| Max. tightening torque for connecting thread | 10 Nm |
| Max. tightening torque for coil fastening | 2 Nm |