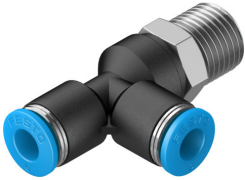


# Push-in T-fitting QSTL-1/4-6-100

Part number: 130827

FESTO



## Data sheet

Feature	Value
Size	Standard
Nominal size	4.3 mm
Type of seal on screwed plug	Coating
Mounting position	optional
Design	T-shape, additional push-in connector, lengthwise Push-pull principle
Size of pack	100
Operating pressure complete temperature range	-0.095 MPa...0.6 MPa -0.95 bar...6 bar -13.775 psi...87 psi
Temperature-dependent operating pressure	-0.095 MPa...1.4 MPa -0.95 bar...14 bar -13.775 psi...203 psi
Note on operating pressure	Water: max. 0.6 MPa at max. 50°C
Operating medium	Compressed air to ISO 8573-1:2010 [7:-:-] Water (liquid, ice-free)
Note on operating and pilot medium	Lubricated operation possible
Corrosion resistance class CRC	1 - Low corrosion stress
LABS (PWIS) conformity	VDMA24364-B1/B2-L
Cleanroom suitability, measured according to ISO 14644-14	Class 4 according to ISO 14644-1
Ambient temperature	-10 °C...80 °C
Nominal torque	9 Nm
Tolerance for nominal tightening torque	± 20%
Product weight	22 g
Number of outputs	2
Number of supply lines	1
Type of mounting	External hexagon, size 14 mm
Pneumatic connection, port 1	Male thread R1/4
Pneumatic connection, port 2	For tubing outside diameter of 6 mm
Colour of release ring	Blue
Material screwed plug	Nickel-plated brass
Note on materials	RoHS-compliant
Material housing	PBT

<b>Feature</b>	<b>Value</b>
Material release ring	POM
Material tubing seal	NBR
Material tubing clamp component	High-alloy stainless steel