

SLE-LED

Linear Striplight

Experience ultimate convenience and performance with RAB DESIGN's re-imagined SLE Strip Light. Featuring an elegant, toolless opening, universal adjustable settings, and high lumen output, this fixture is engineered to give contractors the best installation experience. Available in three lengths, with and without sensor, and optional Bluetooth controls.

IDEAL APPLICATIONS

- ✔ Retail Applications

✔ Office Spaces
- ✔ Parkades

✔ Warehouse Aisles
- ✔ Commercial Applications

✔ General Indoor Lighting
- ✔ Stairwell & Hallway

✔ Storage spaces

SPECIFICATIONS

	SLE2-LED25A15	SLE4-LED50A30	SLE8-LED80A60
PERFORMANCE			
Light Output	Lumen Selectable		
	3500/2800/2100 lm	7000/5600/4200 lm	13000/11000/9500 lm
Efficacy	138 lm/W	138 lm/W	156 lm/W
CCT	3000/3500/4000/5000K (CCT Selectable)		
Beam Angle	130°		
Replaces up to	2 LAMP F21T5	2 LAMP T5HO	4 LAMP 28WT5
LED Lifetime (L80)	>100,000 Hours		
CRI	84		
ELECTRICAL			
Wattage	25/20/15W	50/40/30W	80/70/60W
Voltage	120-347 V		
Surge Protection	2.5kV (Built-in Driver) as per IEC/EN61000-4-5		6kV (Built-in Driver) as per IEC/EN61000-4-5
Power Factor	>0.99		
THD	7%	2%	3%
Daisy Chain	6A Max (Max 22 fixtures at 120V and 62 fixtures at 347V)	6A Max (Max 11 fixtures at 120V and 31 fixtures at 347V)	6A Max (Max 7 fixtures at 120V and 19 fixtures at 347V)
Battery Backup	-	8W (Optional)	
CONSTRUCTION			
Housing	Steel Sheet Metal		
Paint	White Powder Coat Finish		
Lens	Frosted Polycarbonate		
Weight	2.21 lbs	3.86 lbs	7.28 lbs

	SLE2-LED25A15	SLE4-LED50A30	SLE8-LED80A60		
AMBIENT OPERATING TEMPERATURE					
-35°C to 45°C (-31°F to 113°F)					
MOUNTING					
Surface Mount Suspension Mount (Kit Sold Separately)					
CERTIFICATIONS					
cULus Listed for Canada and USA, per UL 1598, CSA C22.2 No. 250.0 DLC Premium					
CONTROLS					
Dimming	0-10V (5-100% Dimming, Dim to Off)			0-10V (10-100% Dimming, Dim to Off)	
Sensor	Dimming High Frequency Microwave Motion Sensor with Remote Control Bluetooth PIR Motion & Daylight Harvest Sensor				
LUMEN MAINTENANCE					
L90		L85		L70	
51,000 Hrs		75,000 Hrs		>100,000 Hrs	
MAX AMPERAGE DRAW (A)					
	120V	208V	240V	277V	347V
SLE2-LED25A15	0.231	0.134	0.116	0.100	0.080
SLE4-LED50A30	0.463	0.267	0.231	0.201	0.160
SLE8-LED80A60	0.741	0.427	0.370	0.321	0.256

Note: Electrical and light performance data is based on LM79 test reports, measured at maximum wattage, 4000K, and 120V.

Life hours are derived from IESNA LM-80 testing report and projected per IESNA TM-21 calculations.

CONTROLLED

ORDERING GUIDE



Fixture	Wattage	Voltage	Colour Temp.	Dimming	Controls	Battery Backup
SLE2	LED25A15	H - 120-347V	VK - Colour Selectable (3000K/3500K/4000K/5000K)	DIM - 0-10V Dimming	Blank - No Controls	Blank - No Battery Backup
SLE4	LED50A30				DHFS - Dimming High Frequency Microwave Motion Sensor	BBK8- 8W Battery Backup ¹
SLE8	LED80A60					

¹Offered with SLE4 and SLE8 only

Default Setting: Maximum Wattage and 4000K

STOCK CODE

099955	SLE2-LED25A15-H-VK-DIM
099956	SLE4-LED50A30-H-VK-DIM
099957	SLE8-LED80A60-H-VK-DIM
084095	SLE2-LED25A15-H-VK-DIM-DHFS
084096	SLE4-LED50A30-H-VK-DIM-DHFS
084097	SLE8-LED80A60-H-VK-DIM-DHFS

INCLUDED IN THE BOX

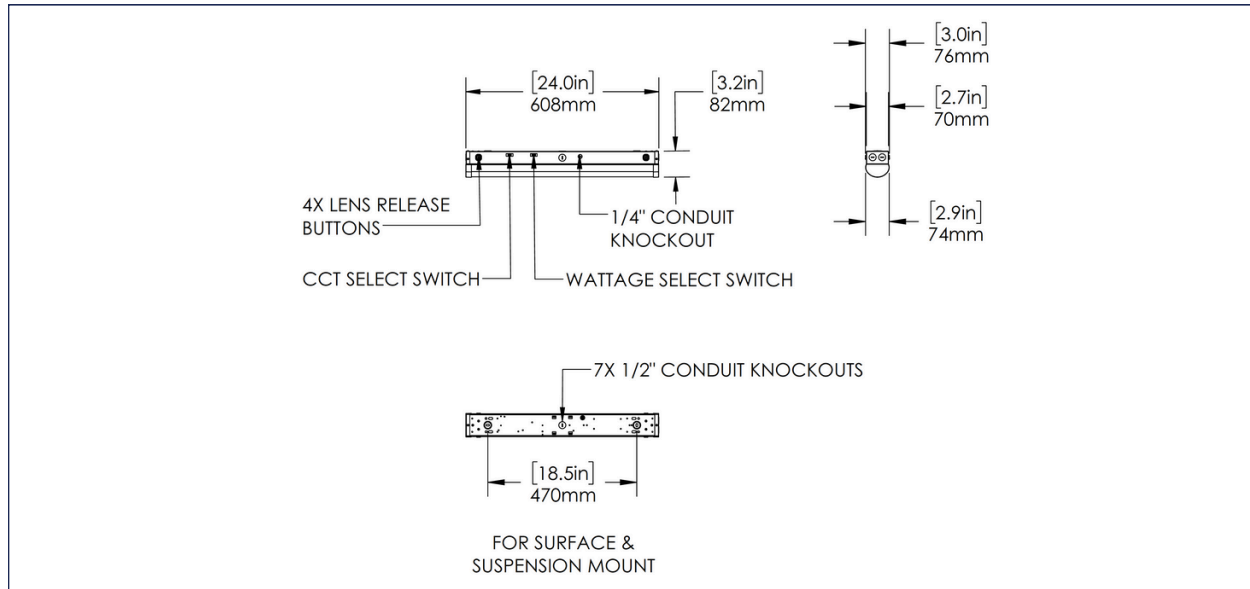
Surface Mount Kit	
Junction Box Cover	

ACCESSORIES SOLD SEPARATELY

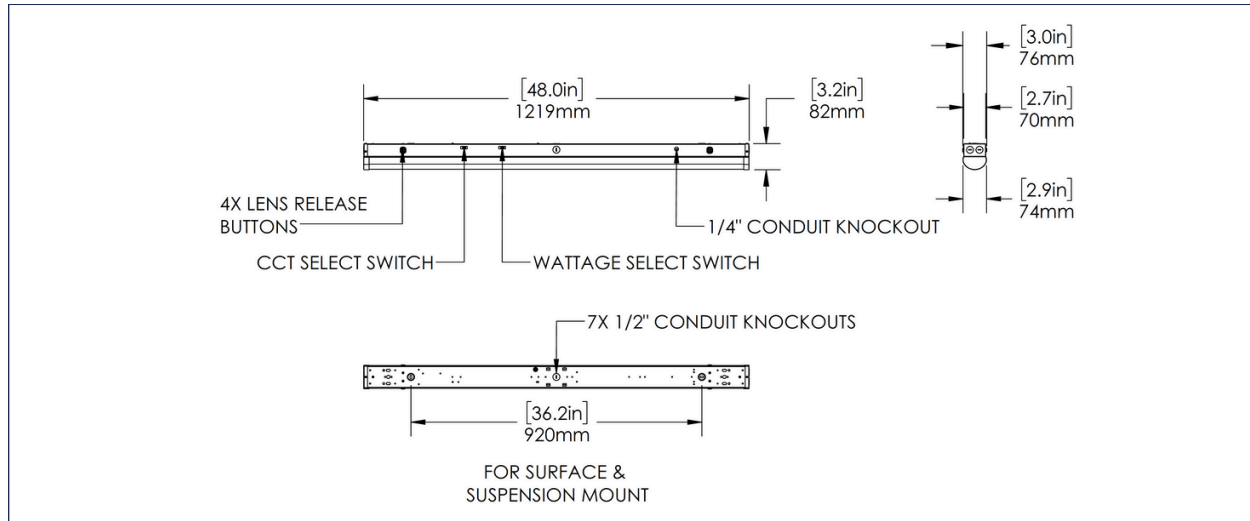
084138	SLE LOWBAY BLUETOOTH PIR MOTION/DLH SENSOR W/J-BOX ¹		084102	SLE4-LED REFLECTOR WINGS KIT - WHT	
084215	BLUETOOTH 3-KEY AC LINE VOLTAGE WALL SWITCH 120-277VAC, 3-KEYS (ON/OFF, DIM+, DIM-)		084135	SLE8-LED REFLECTOR WINGS KIT - WHT	
002412	SLE2-LED WIRE CAGE WHT		089814	LINEAR CEILING PENDANT MOUNT KIT (2x 5FT AIRCRAFT CABLES)	
002413	SLE4-LED WIRE CAGE WHT		087016	RC-100 MOTION SENSOR REMOTE CONTROL	
002414	SLE8-LED WIRE CAGE WHT		084136	SLE-LED ROW MOUNT KIT - WHT	

¹ Each sensor can control one fixture only.

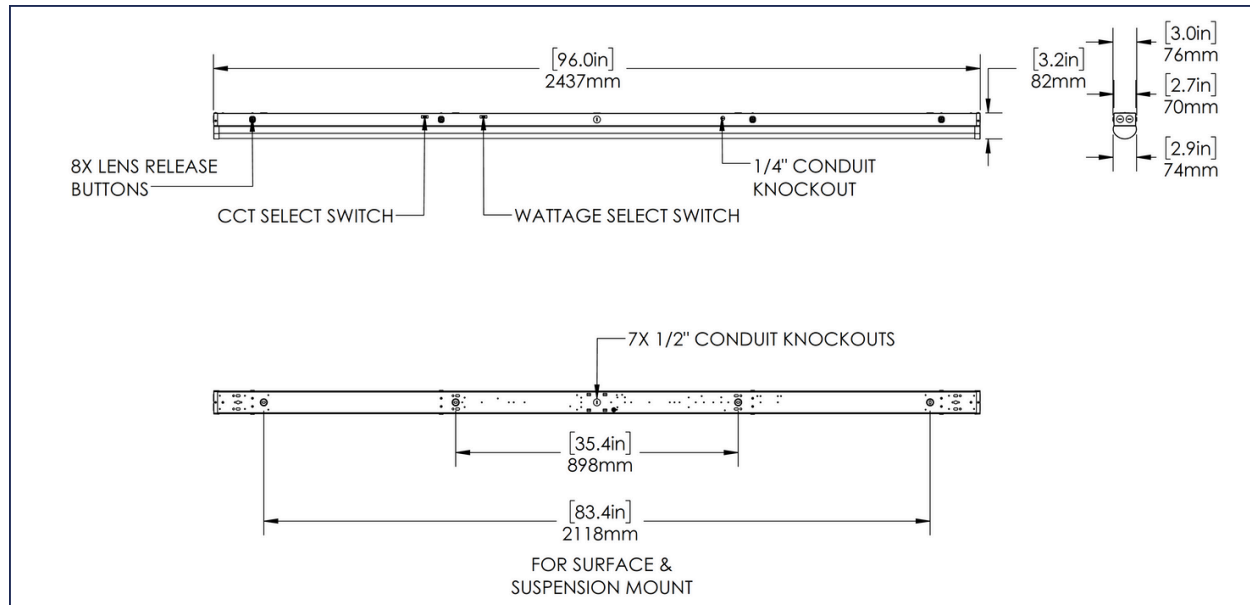
SLE2-LED FIXTURE



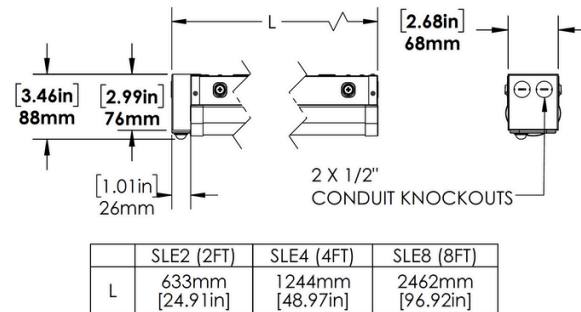
SLE4-LED FIXTURE



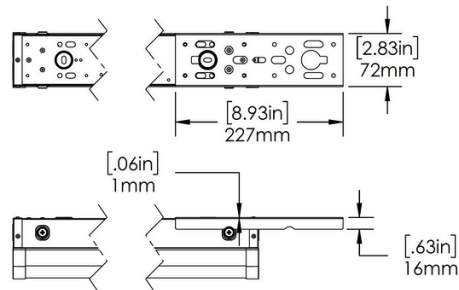
SLE8-LED FIXTURE



BLUETOOTH PIR MOTION & DAYLIGHT HARVEST SENSOR WITH JUNCTION BOX



ROW MOUNT BRACKET

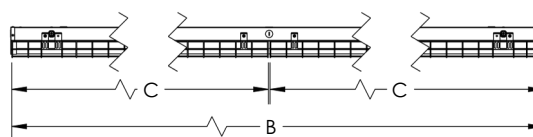


WIRE CAGE

SLE2 (2FT) & SLE4 (4FT)



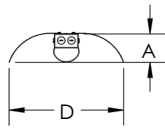
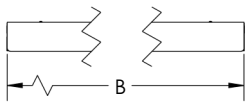
SLE8 (8FT)



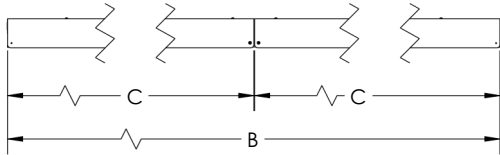
	SLE2 (2FT)	SLE4 (4FT)	SLE8 (8FT)
A	92mm [3.62in]	92mm [3.63in]	92mm [3.63in]
B	607mm [23.91in]	1213mm [47.74in]	2430mm [95.67in]
C	N/A	N/A	1213mm [47.74in]
D	90mm [3.54in]	90mm [3.54in]	90mm [3.54in]

REFLECTOR WINGS

SLE4 (4FT)



SLE8 (8FT)



	SLE4 (4FT)	SLE8 (8FT)
A	85mm [3.36in]	85mm [3.36in]
B	1217mm [47.90in]	2435mm [95.87in]
C	N/A	1217mm [47.90in]
D	327mm [12.86in]	327mm [12.86in]

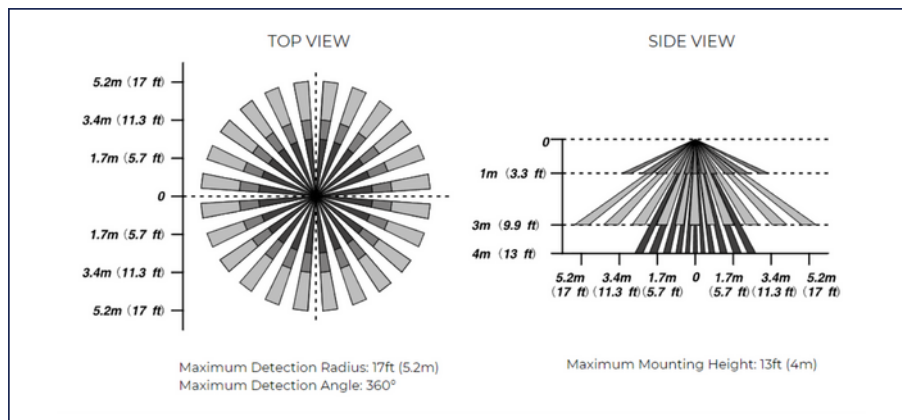
DIMMING HIGH FREQUENCY MOTION SENSOR (DHFS)

DHFS Microwave motion sensor offers a range of control features based on motion detection allowing the Installer to adjust the brightness of the fixture, hold time and daylight settings using a remote control after installation.

DIMMING HIGH FREQUENCY MOTION SENSOR SPECIFICATIONS

Sensor Type	Dimming High Frequency/Microwave
Microwave Frequency	5.8GHz +/- 75MHz
Operating Voltage	12-24VDC
Operating Current	25mA
Output Voltage	0-10V
Stand-by Power	<0.2mW
Ambient Operating Temperature ¹	-40°C to 70°C (-40°F to 158°F)
Installation	Factory installed inside the fixture housing

DETECTION RANGE



DIMMING HIGH FREQUENCY MICROWAVE MOTION SENSOR PROGRAMMING

Programming Tool	RC-100 Remote Control
Brightness	70%/80%/90%/100%*
Sensitivity	20%/50%/75%/100%*
Hold Time	10s/1min*/5min/10min/15min/20min/30min/60min
Daylight Sensor	10Lux/30Lux/50Lux/100Lux/300Lux/500Lux/Eye Icon(Auto Calibrate)/Sun Icon (Disabled)*
Standby Dim	0%/10%/30%/50%*
Standby Time	1min/30min/60min*/+∞

¹When installed in the fixture, the system's ambient operating temperature is limited by the component with the lowest allowable range.

Note:

Default settings are marked with *

Default Setting: After no motion for 1min (hold time), the fixture will dim from 100% (brightness) to 50% (stand-by dim level). After no motion for another 60 min (stand-by time), the fixture will turn off.

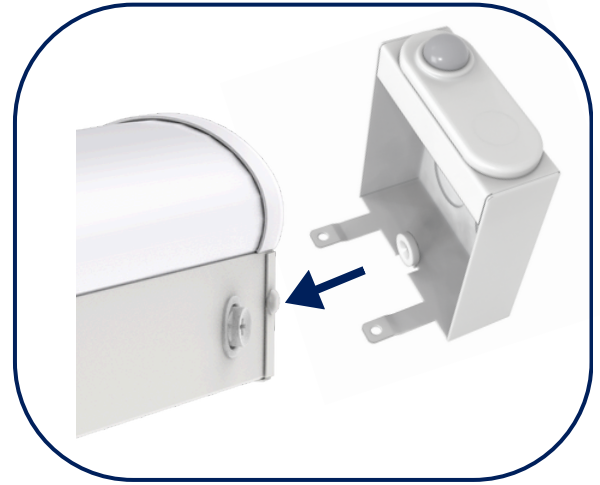
For instructions on programming the motion sensor remote control, please see the Installation Instructions.

CONTROLLED

BLUETOOTH PIR MOTION & DAYLIGHT HARVEST SENSOR

FEATURES

- PIR motion and daylight harvest sensor
- Bluetooth mesh network
- DLC - Networked Lighting Control (NLC) & Luminaire Level Lighting Control (LLLC)



SPECIFICATIONS	
Input Voltage	12 VDC
Input Current	25mA Max.
Input Power	0.3W
Output Current	10mA Max.
Output Power	0.1W
Dimming	Class 2, 0-10 VDC
Bluetooth Transmit	100ft Max.
Radio Frequency	2.4GHz ±75MHz
Bluetooth Version	5.0
Housing Material	Polycarbonate (UL 94-5VA)
Housing Finish	White
Detection Range	40ft Max.
Mounting Height	18ft Max.
Indoor/Outdoor Use	Indoor Use Only
Operating Temperature ¹	-30°C to 55°C (-22°F to 131°F)
Storage Temperature	-30°C to 85°C (-22°F to 185°F)
IP Rating	IP20
Installation ²	The sensor is pre-installed in the junction box

¹When installed in the fixture, the system's ambient operating temperature is limited by the component with the lowest allowable range.

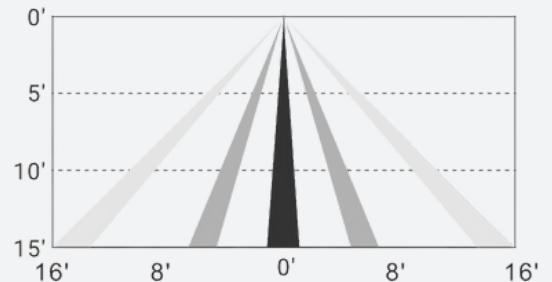
²Please see the product installation instructions for more information on mounting the junction box on the fixture.

DEFAULT SETTINGS	
Motion Sensor	ON
Mode	Occupancy
High End Trim	100%
Sensitivity	High
Hold Time (T1)	20 min
Standby Dim	50%
Standby Time (T2)	1 min
Daylight Harvest	Off
Linkage	Off
Linkage Level	100%

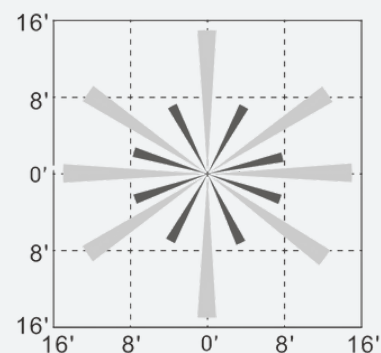
Note: Program the sensor with the desired settings using the Controlled Mobile App (please refer to the Controlled App manual for instructions).

DETECTION COVERAGE

Side View (at 15ft Height)



Top View (at 15ft Height)



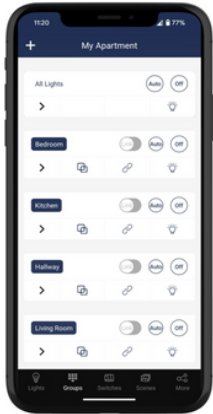
SPECIFICATIONS & COMMISSIONING



CONTROLLED

RAB
DESIGN

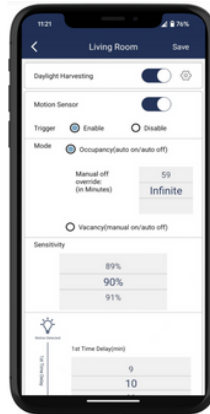
ControlLED Network Lighting Controls (NLC) delivers secure, wireless lighting management with Bluetooth Mesh and the ControlLED App. Integrated sensors enable automatic adjustments for comfort, safety, and efficiency.



Organized Workspaces:
Create Zones, Groups and Group linkages.



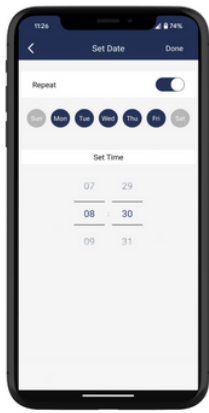
Dimming Lights:
Set dim level for groups or individual lights.



Motion and Daylight Harvest Sensors:
Custom sensor settings for groups or individual lights.



Scenes:
Create custom scenes for different scenarios.



Schedules:
Create custom schedules for recurring events.



Share Access:
Share access using QR codes.

Get the App!



RAB
DESIGN

**Engineered by skilled hands,
for skilled hands.**

© RAB Design Lighting Inc. 2025. All rights reserved.
For more information, visit rabdesign.ca.

BATTERY BACKUP SPECIFICATIONS		
	SLE4-LED50A30	SLE8-LED80A60
Input Power	8W	
Input Voltage	120-347V	
Output Power (Emergency Mode)	8W	9W
Recharge Current	0-200mA	0-500mA
Recharge Time	24 Hrs	24 to 48 Hrs
Discharge Time	90 min	
Ambient Operating Temperature ¹	10°C to 60°C (50°F to 140°F)	0°C to 55°C (32°F to 131°F)
Service Life	50,000 Hrs	
IP Rating	IP20	
Installation	Factory installed inside the fixture housing	
Light Output ²	1120 lm	1350 lm

¹When installed in the fixture, the system's ambient operating temperature is limited by the component with the lowest allowable range.

²Lumen output with emergency battery backup can be calculated by multiplying the battery output power with the efficacy of fixture.

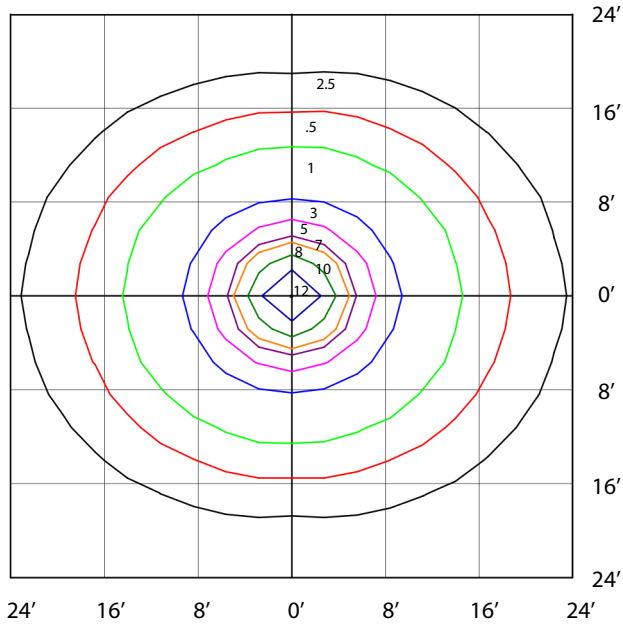
Note: In emergency mode, the CCT of SLE4-LED50A30 will be fixed at 5000K. Once power is restored, the CCT will revert to the setting configured on the CCT select switch.

PHOTOMETRIC PLOTS

SLE2-LED25A15-H-VK-DIM (25W 120V 4000K)
MOUNTED AT 8 FEET

Total Lumens = 3535.9LM

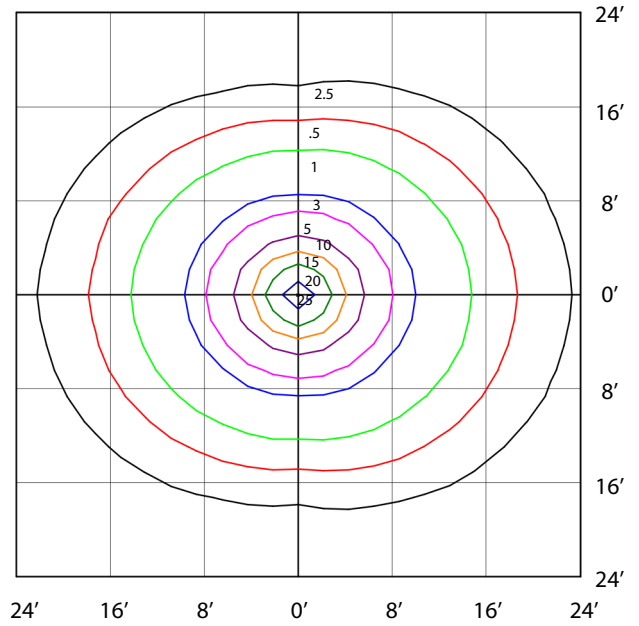
Maximum Calculated Value = 14.559 Fc



SLE4-LED50A30-H-VK-DIM (50W 120V 4000K)
MOUNTED AT 8 FEET

Total Lumens = 6769LM

Maximum Calculated Value = 28.8 Fc



SLE8-LED80A60-H-VK-DIM (80W 120V 4000K)
MOUNTED AT 10 FEET

Total Lumens = 12959.3LM

Maximum Calculated Value = 34.66 Fc

