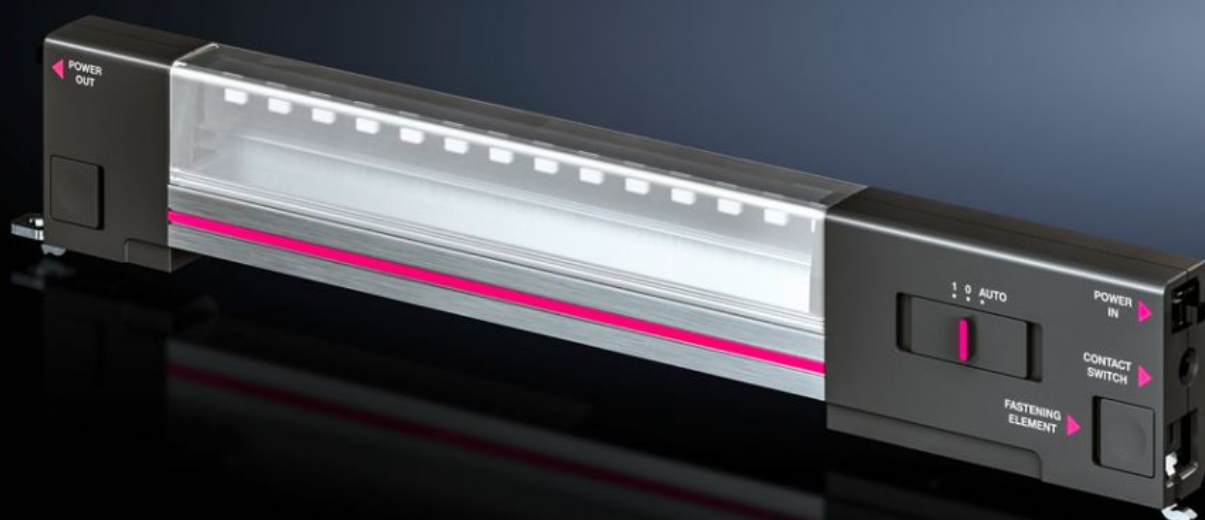


# Rittal – The System.

Faster – better – everywhere.



## SZ 2500.110 LED system light

State: 2/6/2025 (Source: [rittal.com/us-en](http://rittal.com/us-en))

ENCLOSURES

POWER DISTRIBUTION

CLIMATE CONTROL

IT INFRASTRUCTURE

SOFTWARE & SERVICES

FRIEDHELM LOH GROUP



# SZ 2500.110 - LED system light

LED system light - the first light designed especially for enclosures! Advanced LED technology provides even more light into the last recess.

## Features

Model No.	SZ 2500.110
Version	without socket
Benefits	Optimum illumination of the entire enclosure Option of clip-on, screw or magnetic attachment A configuration to suit every application
Version	without socket
Material	Light body: Extruded aluminum Light cover: polycarbonate Light ends: PC-ABS
Color	Enclosure: RAL 7016
Supply includes	Assembly screws
Rated power	7 W
Connection options	Power Supply, 2-pole Through-wiring, 2-pole Door-operated switch
Protection category	II (total insulation)
Light – installation type	Screw fastening Clip fastening Magnetic fastener (accessories)
Installation options	The internal mounting rail AX and the mounting bracket are required when installing in compact enclosures Directly onto the enclosure section with 25 mm pitch pattern
Luminous flux	600 lm
Light color	4000 K (neutral white)
Note	Connection accessories should be ordered separately

## Features

Dimensions	Width: 337 mm Height: 55 mm Depth: 23 mm Width: 13.3 " Height: 2.17 " Depth: 0.91 "
Operating temperature range	-20 °C...55 °C -4 °F...131 °F
Rated operating voltage	100 V - 230 V, 1~, 50 Hz/60 Hz
Protection category IP to IEC 60529	IP 20
Packaging unit	1 pc(s).
Net weight	0.263
Gross weight	0.351
Customs tariff number	94054990
EAN	4028177806948
E-Number Sweden	E3465306
ETIM 9	EC000321
ETIM 8	EC000321
ECLASS 8.0	27189241

## Approvals

Approvals	ENEC
Explanations	Declaration of conformity Declaration of conformity UK