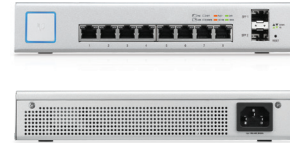


UniFi® | SWITCH

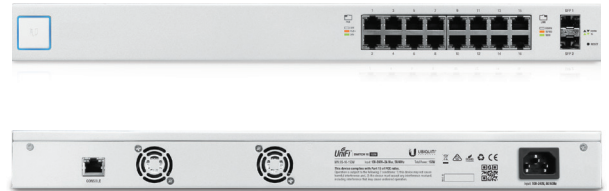
Model: US-8-150W

- (8) Gigabit RJ45 Ports
- (2) SFP Ports
- Non-Blocking Throughput: 10 Gbps
- Switching Capacity: 20 Gbps
- Forwarding Rate: 14.88 Mpps
- Maximum Power Consumption: 150W
- Supports PoE+ IEEE 802.3at/af and 24V Passive PoE
- Quiet, Fanless Operation
- Desktop-Mountable (Do not physically stack the US-8-150W.)



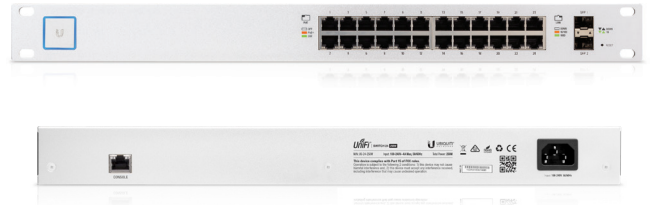
Model: US-16-150W

- (16) Gigabit RJ45 Ports
- (2) SFP Ports
- (1) Serial Console Port
- Non-Blocking Throughput: 18 Gbps
- Switching Capacity: 36 Gbps
- Forwarding Rate: 26.78 Mpps
- Maximum Power Consumption: 150W
- Supports PoE+ IEEE 802.3at/af and 24V Passive PoE
- Rack-Mountable or Wall-Mountable with Rack-Mount Brackets (Included)



Model: US-24-250W

- (24) Gigabit RJ45 Ports
- (2) SFP Ports
- (1) Serial Console Port
- Non-Blocking Throughput: 26 Gbps
- Switching Capacity: 52 Gbps
- Forwarding Rate: 38.69 Mpps
- Maximum Power Consumption: 250W
- Supports PoE+ IEEE 802.3at/af and 24V Passive PoE
- Rack-Mountable



Model: US-24-500W

- (24) Gigabit RJ45 Ports
- (2) SFP Ports
- (1) Serial Console Port
- Non-Blocking Throughput: 26 Gbps
- Switching Capacity: 52 Gbps
- Forwarding Rate: 38.69 Mpps
- Maximum Power Consumption: 500W
- Supports PoE+ IEEE 802.3at/af and 24V Passive PoE
- Rack-Mountable

