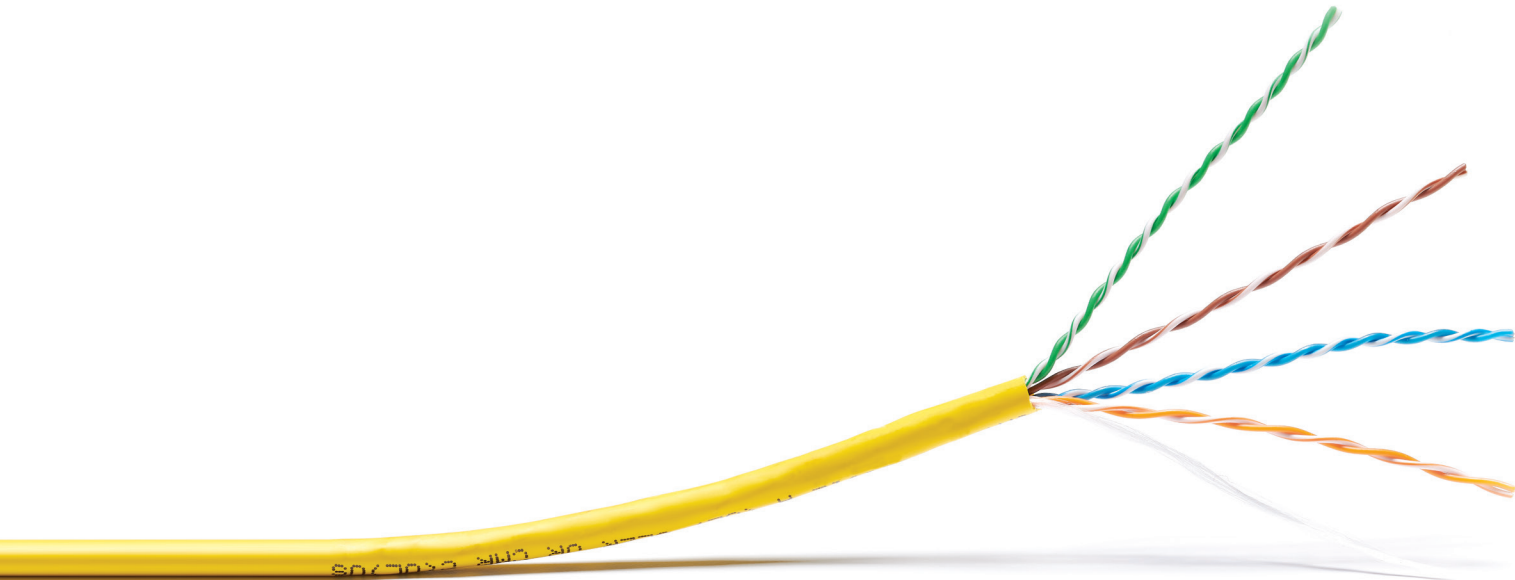


Cat 6, Unshielded (U/UTP)



Number of Pairs	Ratings	Bandwidth @ 100 meters	Bandwidth @ 30 meters	Recommended PoE Limit	Center Spline	Nominal Outer Diameter (Inches)	Average Weight (Pounds / 1000 ft.)	Part Number
4	Plenum (CMP/FT6)	1 Gbps	10 Gbps	60W and above	No	0.205	25.0	6361
4	Riser (CMR/FT4)	1 Gbps	10 Gbps	60W and above	No	0.205	24.0	6360
4	Direct Burial	1 Gbps	10 Gbps	60W and above	No	0.236	27.0	5110