

# 9460

60 Amp, 125/250 Volt, Flush Mount Receptacle, Straight Blade, Industrial Grade

60 Amp, 125/250 Volt, NEMA 14-60R, 3P, 4W, Flush Mtg Receptacle, Straight Blade, Industrial Grade, Grounding, , Side Wired, Steel Strap, - Black

**ROHS Compliant** : Yes

Leviton's line of Extra Heavy-Duty Industrial Grade receptacles are designed and manufactured to withstand the harsh conditions typically associated with industrial environments. Available in a wide variety of configurations, including isolated ground, tamper-resistant, hospital grade, etc., these Industrial Grade devices are the electrical contractor's choice for use in factories, schools, hospitals and commercial office buildings.

**UPC Code** : 078477843253

**Country Of Origin** : Mexico

**NEMA** :  14-60R

## Technical Information

### AC Horsepower Ratings

**At Rated Voltage** : 3-1/2 HP

### Electrical Specifications

**Amperage** : 60 A

**Current Limiting** : Full Rated Current

**Dielectric Voltage** :  
Withstands 2000V per UL498

**Grounding** : Grounding

**Pole** : 3

**Temperature Rise** : Max 30C  
after 50 cycles OL at 150  
percent rated current

**Voltage** : 125/250 VAC

**Wire** : 4

### Environmental Specifications

**Operating Temperature** : -40°  
C to 60°C

### Material Specifications

**Body Material** : Nylon

**Color** : Black

**Face Material** : Nylon

**Line Contacts** : Brass Double-  
Wipe

**Strap Material** : Galvanized  
Steel

### Mechanical Specifications

**Product ID** : Ratings are  
permanently marked on device

**Terminal Accom.** : Up to 4  
AWG

### Product Features

**Color** : Black

**Device Type** : Straight Blade  
Receptacle

**NEMA** : 14-60R

**Terminal ID** : Brass-Hot,  
Green-Ground, Silver-Neutral

Standards and Certifications

**ANSI** : C-73

**CSA C22.2 No. 42** : File  
152105

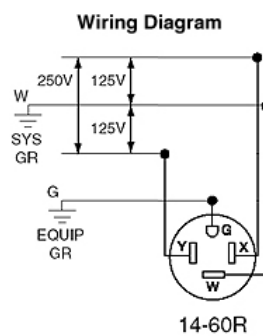
**NEMA** : WD-6

**NOM** : 057

**UL498** : File E13399

**Warranty** : 10-Year Limited

## Wiring Diagram



### SPECIFICATION SUBMITTAL

<b>JOB NAME:</b> <input type="text"/>	<b>CATALOG NUMBERS:</b> <input type="text"/>
<b>JOB NUMBER:</b> <input type="text"/>	<input type="text"/>

#### Leviton Manufacturing Co., Inc

201 North Service Road, Melville, NY 11747

Telephone: +1-800-323-8920 · FAX: +1-800-832-9538 · Tech Line (8:30AM-7:30PM E.S.  
T. Monday-Friday): +1-800-824-3005

#### Leviton Manufacturing of Canada, Ltd.

165 Hymus Boulevard, Pointe Claire, Quebec H9R 1E9 · Telephone: +1-800-469-7890 ·  
FAX: +1-800-824-3005 · [www.leviton.com/canada](http://www.leviton.com/canada)

#### Leviton S. de R.L. de C.V.

Lago Tana 43, Mexico DF, Mexico CP 11290 · Tel.: (+52)55-5082-1040 · FAX: (+52)  
5386- 1797 · [www.leviton.com.mx](http://www.leviton.com.mx)

**Visit our Website at: [www.leviton.com](http://www.leviton.com)**

© 2024 Leviton Manufacturing Co., Inc. All Rights Reserved. Subject to change without  
notice.

#### Leviton has a global presence.

If you would like to know where your local Leviton office is located please go to:  
[www.leviton.com/international/contacts](http://www.leviton.com/international/contacts)

© 2024 Leviton Manufacturing Co., Inc.