



# CorePro MainsFit (UL Type-B) T8

12T8/COR/48-840/MF18/G/DIM 25/1

The CorePro MainsFit (UL Type B) lamps are designed to be the perfect retrofit solution to move from traditional fluorescent lamps to energy saving LEDs. This ballast bypass lamp has everything needed built into the lamp with proven energy savings, long life (up to 50k hours), surge suppression and industry leading safety features. All lamps in the CorePro MainsFit family are double-ended to help simplify the installation. In addition, all lamps meet the Philips standards for light quality so that end users will be in a comfortable environment regardless of the CorePro MainsFit lamp type.

## Product data

General Information	
Cap-Base	G13 [Medium Bi-Pin Fluorescent]
Nominal lifetime	50,000 hour(s)
Switching Cycle	50,000
Lighting Technology	LED
Light Technical	
Color Code	840 [CCT of 4000K]
Beam Angle (Nom)	240 degree(s)
Luminous Flux	1,800 lm
Color Designation	Cool White (CW)
Luminous Efficacy (rated) (Nom)	150.00 lm/W
Correlated Color Temperature (Nom)	4000 K
Color Consistency	6SCDM
Color rendering index (CRI)	80
LLMF At End Of Nominal Lifetime (Nom)	70 %

Operating and Electrical	
Line Frequency	50 to 60 Hz
Input Frequency	50 to 60 Hz
Power Consumption	12 W
Lamp Current (Max)	104 mA
Lamp Current (Min)	48 mA
Wattage Equivalent	32 W
Starting Time (Nom)	0.5 s
Warm-up time to 60% light	0.5 s
Power Factor (Fraction)	0.9
Voltage (Nom)	120-277 V
UL Type	UL Type B
Temperature	
Ambient temperature range	-20 °C to 45 °C
T-Case Maximum (Nom)	70 °C

CorePro MainsFit (UL Type-B) T8

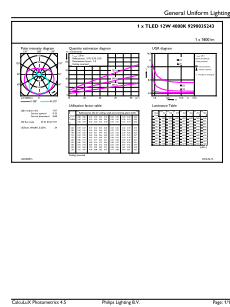
Controls and Dimming	
Dimmable	Only with specific dimmers
Mechanical and Housing	
Bulb Finish	Frosted
Bulb Material	Glass
Product Length	1,200 mm
Bulb Shape	T8
Approval and Application	
Energy Saving Product	Yes
Approval Marks	RoHS compliance UL certificate DLC compliance
EU RoHS compliant	Yes

Application Conditions	
can it be used in closed luminaires	Yes
Product Data	
Order product name	12T8/COR/48-840/MF18/G/DIM 25/1
Full product name	12T8/COR/48-840/MF18/G/DIM 25/1
Order code	579383
Material Nr. (12NC)	929003524304
Numerator - Quantity Per Pack	1
Net Weight (Piece)	0.200 kg
EAN/UPC - Product/Case	046677579388
Numerator - Packs per outer box	25
EAN/UPC - Case	50046677579383

Dimensional drawing

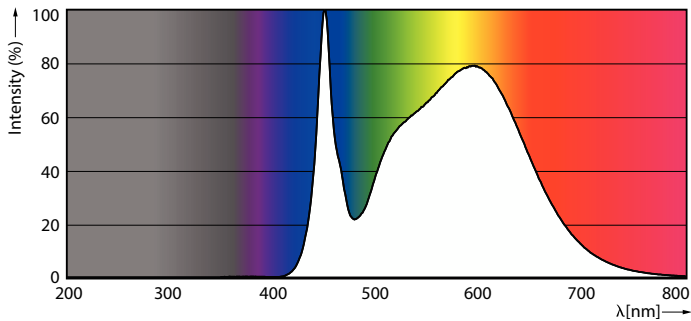
Product	D1	D2	A1	A2	A3
12T8/COR/48-840/MF18/G/DIM 25/1	25.7 mm	28 mm	1,198.2 mm	1,205.3 mm	1,212.4 mm

Photometric data



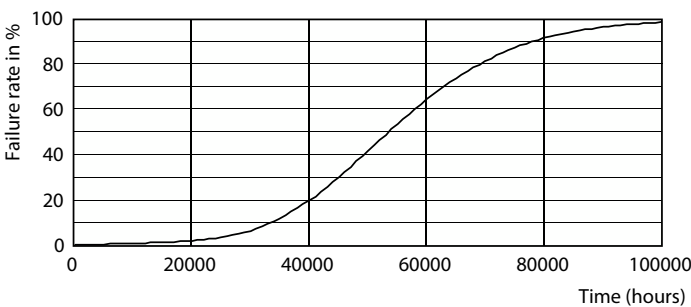
CorePro MainsFit (UL Type-B) T8

Photometric data

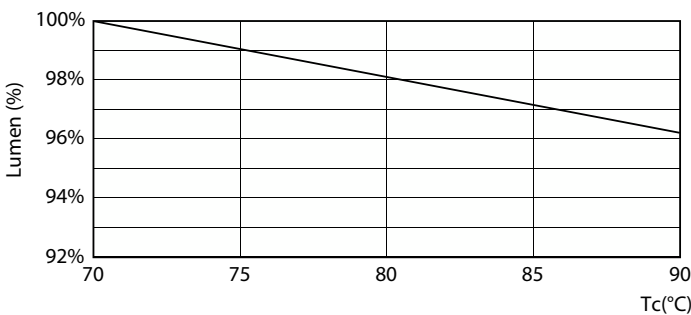


Spectral Power Distribution Colour - 12T8/COR/48-840/MF18/G/DIM 25/1

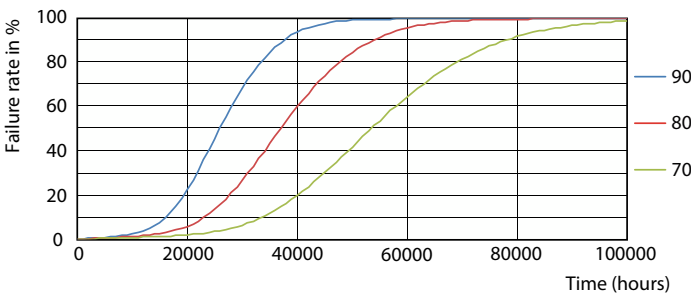
Lifetime



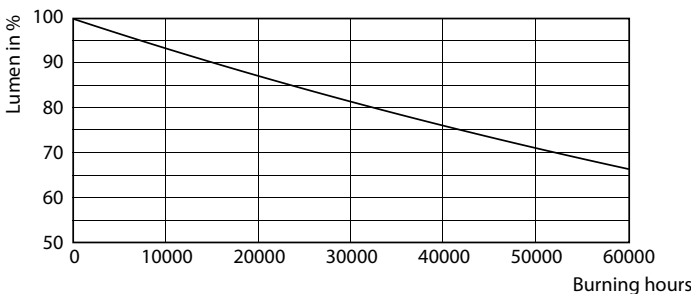
Life Expectancy Diagram



Lumen Maintenance Diagram - 12T8/COR/48-840/MF18/G/DIM 25/1



LEDtube 50K 7090 FailureRate-LED



Lumen Maintenance Diagram - 12T8/COR/48-840/MF18/G/DIM 25/1

CorePro MainsFit (UL Type-B) T8

Lifetime



LifetimeVsTc

