

MasterClass InstantFit (UL Type-A) T8

13T8/MAS/48-850/IF21/P/DIM 10/1

The MasterClass InstantFit T8 lamps provide hassle-free installation with simple lamp-for-lamp replacements. They deliver what we promise, with at least 40% energy savings, flicker-free performance, and the life you would expect. Other lamps claim compatibility but only MasterClass InstantFit (UL Type A) has been proven to work with over 200 ballasts and drivers, delivering even light output, with proven energy savings and a long average lifetime. End users will be delighted being under these comfortable and high quality lamps with no visible flicker and optimized optics. Energy managers will enjoy these lamps too as they can count the savings delivered by our lamps. To enjoy more energy savings, the MasterClass InstantFit lamps can be paired with the Advance TLED drivers to create a Type C system. With available 70,000 hour life, 7-year limited warranty and a shatter-prevention polycarbonate lens, Philips MasterClass InstantFit TLED lamps deliver benefits for all.

Product data

General Information	
Cap-Base	G13 [Medium Bi-Pin Fluorescent]
Nominal lifetime	70,000 hour(s)
Switching Cycle	50,000
Lighting Technology	LED
Light Technical	
Color Code	850 [CCT of 5000K]
Beam Angle (Nom)	180 degree(s)

Luminous Flux	2,100 lm
Luminous Efficacy (rated) (Nom)	161 lm/W
Color Designation	Daylight
Correlated Color Temperature (Nom)	5000 K
Color Consistency	<5
Color rendering index (CRI)	80
LLMF At End Of Nominal Lifetime (Nom)	70 %

MasterClass InstantFit (UL Type-A) T8

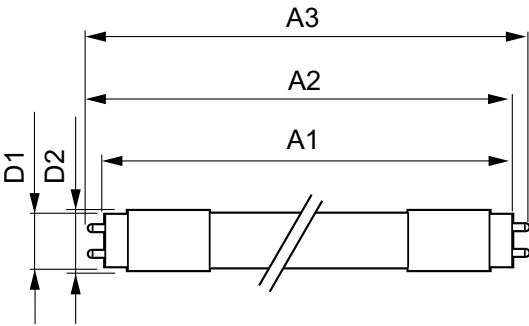
Operating and Electrical	
Line Frequency	20K to 120K Hz
Input Frequency	20K to 120K Hz
Power Consumption	13 W
Lamp Current (Max)	300 mA
Lamp Current (Min)	50 mA
Wattage Equivalent	32 W
Starting Time (Nom)	0.5 s
Warm-up time to 60% light	0.5 s
Power Factor (Fraction)	0.9
Voltage (Nom)	120-277,347 V
UL Type	UL Type A

Temperature	
Ambient temperature range	-20 °C to 45 °C
T-Case Maximum (Nom)	40 °C

Controls and Dimming	
Dimmable	Only with specific dimmers

Mechanical and Housing	
Bulb Finish	Frosted
Bulb Material	Plastic
Product Length	1,200 mm
Bulb Shape	T8

Dimensional drawing



Approval and Application	
Energy Saving Product	Yes
Approval Marks	RoHS compliance UL certificate DLC compliance
Energy Consumption kWh/1000 h	- kWh
Energy Certifications	DLC Standard
EU RoHS compliant	Yes

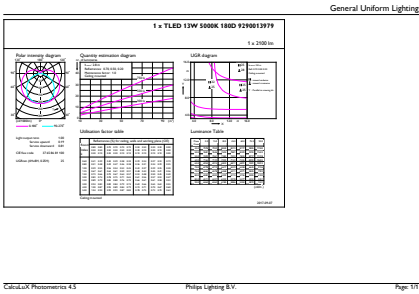
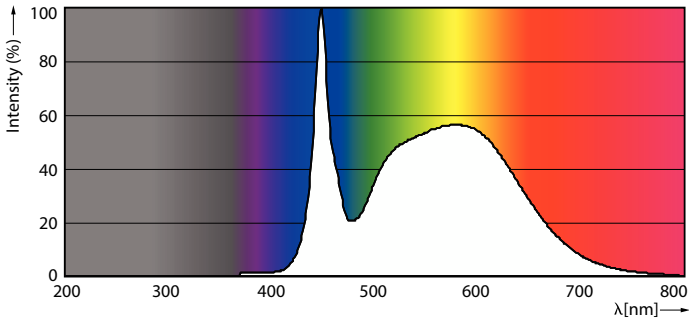
Application Conditions	
can it be used in closed luminaires	Yes

Product Data	
Order product name	13T8/MAS/48-850/IF21/P/DIM 10/1
Full product name	13T8/MAS/48-850/IF21/P/DIM 10/1
Order code	473958
Material Nr. (12NC)	929001397934
Numerator - Quantity Per Pack	1
Net Weight (Piece)	0.165 kg
EAN/UPC - Product/Case	046677473952
Numerator - Packs per outer box	10
EAN/UPC - Case	50046677473957

Product	D1	D2	A1	A2	A3
13T8/MAS/48-850/IF21/P/DIM 10/1	25.7 mm	26.3 mm	1,198.1 mm	1,205.2 mm	1,212.3 mm

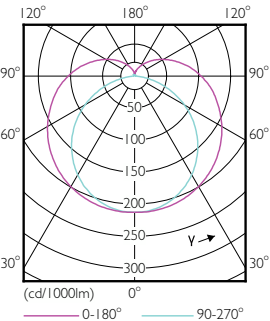
MasterClass InstantFit (UL Type-A) T8

Photometric data



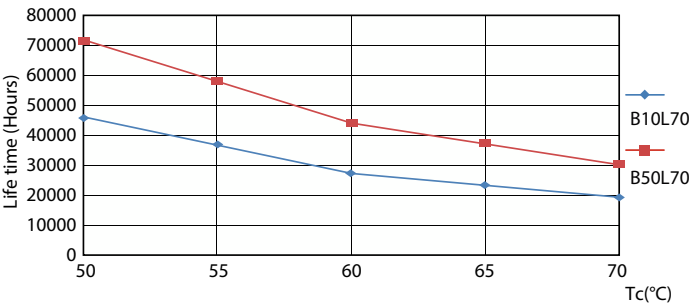
Spectral Power Distribution Colour - 13T8/MAS/48-850/IF21/P/DIM 10/1

General uniform lighting - 13T8/MAS/48-850/IF21/P/DIM 10/1

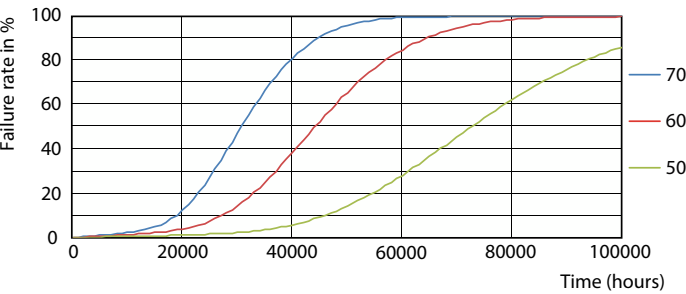


Light Distribution Diagram - 13T8/MAS/48-850/IF21/P/DIM 10/1

Lifetime



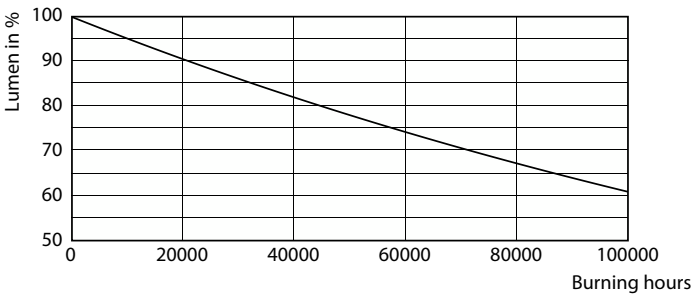
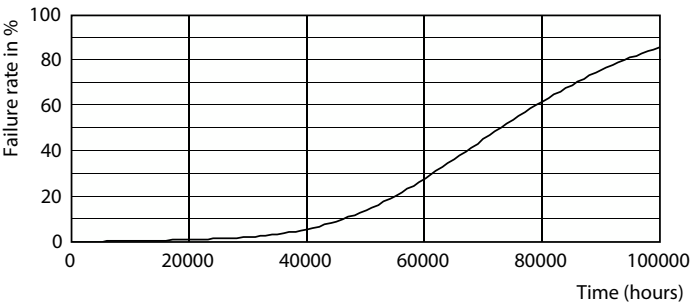
LEDtube 13W G13 2100lm



LEDtube 13W G13 2100lm

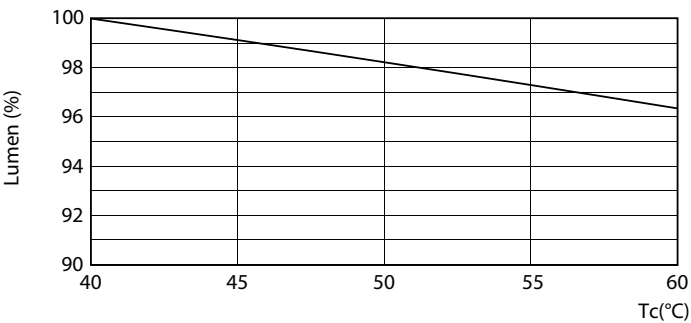
MasterClass InstantFit (UL Type-A) T8

Lifetime



LEDtube 13W G13 2100lm

Lumen Maintenance Diagram - 13T8/MAS/48-850/IF21/P/DIM 10/1



Lumen Maintenance Diagram - 13T8/MAS/48-850/IF21/P/DIM 10/1

