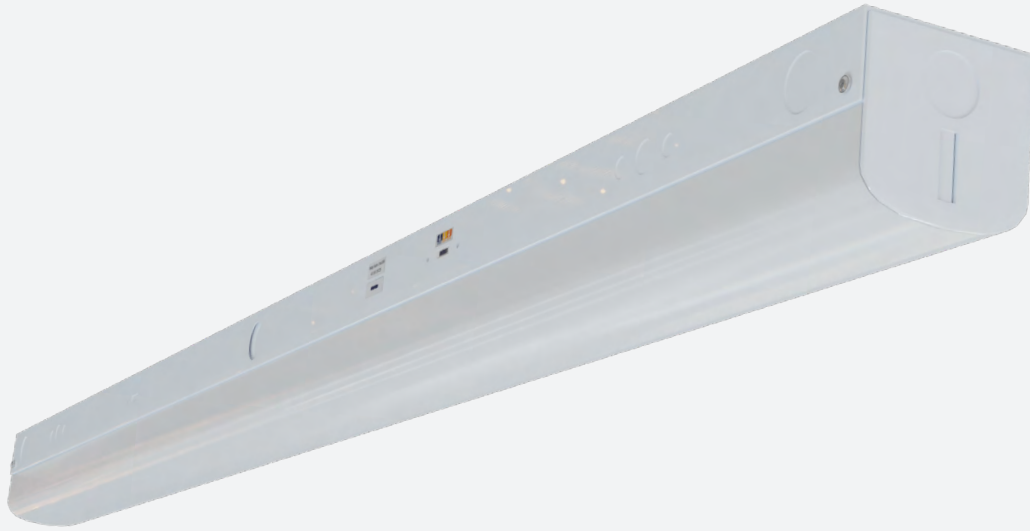


Date:	Project Name:
Type:	Part Number:



# SABRE SERIES

## LED LINEAR STRIP




### DESCRIPTION

Reno Lighting's Sabre Series is the LED Commercial Strip fixture is designed with a polycarbonate diffuser that provides impact resistance and even, low glare light. Combine this with powerful, high output LED chips, these fixtures meet today's stringent efficacy standards and bring your projects maximum energy savings.

### FEATURES

- DLC Premium of the Stairwell and Passageway Luminaires
- 0-10V dimming control compatible
- Surface or Suspension Mounting options
- Operating temperature: -22°F to +122°F (-30°C to +50°C)
- Dual Voltage 120-347V
- Easy and Safe Installation
- Frosted Polycarbonate Lens
- Suitable for Damp location
- Rated Lifetime L70(hrs): >100,000
- Includes J-Box Coverplate and V-Hangers
- Multi CCT & Wattage
- 10 year warranty

### APPLICATIONS

-  Parking Garage
-  Stairwell/Passageway
-  Warehouse



Date:	Project Name:
Type:	Part Number:

## SPECIFICATION

ORDER#	MODEL#	WATTS	VOLTAGE (V)	CCT (K)	LUMENS	EFFICACY	CRI
R33009	RENO-LSN2-22W-DV-MCCT	22W	120-347V	3500K	3527 lm	160.3 lm/W	>80
				4000K	3740 lm	170 lm/W	
				5000K	3542 lm	161 lm/W	
R33018	RENO-LSN4-DV-MW-MCCT	22W	120-347V	3500K	3593 lm	163.3 lm/W	>80
		28W			4544 lm	162.3 lm/W	
		36W			5807 lm	161.3 lm/W	
		44W			7053 lm	160.3 lm/W	
		22W		4000K	3806 lm	173 lm/W	>80
		28W			4816 lm	172 lm/W	
		36W			6156 lm	171 lm/W	
		44W			7480 lm	170 lm/W	
		22W		5000K	3608 lm	164 lm/W	>80
		28W			4564 lm	163 lm/W	
		36W			5832 lm	162 lm/W	
		44W			7084 lm	161 lm/W	
R33019	RENO-LSN8-DV-MW-MCCT	48W	120-347V	3500K	7843 lm	163.4 lm/W	>80
		68W			11,043 lm	162.4 lm/W	
		90W			14,526 lm	161.4 lm/W	
		48W		4000K	8304 lm	173 lm/W	>80
		68W			11,696 lm	172 lm/W	
		90W			15,390 lm	171 lm/W	
		48W		5000K	7872 lm	164 lm/W	>80
		68W			11,084 lm	163 lm/W	
		90W			14,580 lm	162 lm/W	

Date:	Project Name:
Type:	Part Number:

## DLC CHART

ORDER#	MODEL#	APPLICATION	DLC	
			STANDARD	PREMIUM
R33009	RENO-LSN2-22W-DV-MCCT	Direct Linear Ambient Luminaires	S-SYN41L	
		Stairwell and Passageway Luminaires		S-DRA2TN
R33018	RENO-LSN4-DV-MW-MCCT	Direct Linear Ambient Luminaires	S-XJ5NO7	
		Low-Bay Luminaires for Commercial and Industrial Buildings	S-SHT7R4	
		Stairwell and Passageway Luminaires		S-CEJ1VP
R33019	RENO-LSN8-DV-MW-MCCT	Direct Linear Ambient Luminaires	S-F8KWGX	
		Low-Bay Luminaires for Commercial and Industrial Buildings	S-BD9243	
		Stairwell and Passageway Luminaires		S-5H2VSL

## ACCESSORIES OPTIONS

ORDER#	MODEL#	DESCRIPTION
R39501	L-BRACKET	L-Bracket for 90° Installation
R39502	I-BRACKET	I-Bracket for straight continuous Installation
R39503	RENO-LSN4-WG	LED Linear Strip Wire Guard for 4ft
R39504	RENO-LSN8-WG	LED Linear Strip Wire Guard for 8ft
R83004	RENO-EM-C08	Emergency LED Driver

## SENSOR OPTIONS

ORDER#	MODEL#	DESCRIPTION
R74002	RENO-SENSOR-PIR-H-EX	For external mounting when installed above 13FT

## REMOTE OPTIONS

ORDER#	MODEL#	DESCRIPTION
R73002	RENO-REMOTE-H	Controller for Bi-Level Sensor (with screen)
R73005	RENO-REMOTE-H-ECO	ECO controller for Bi-Level sensor (without screen)