

MDA

1/4" x 1-1/4" time delay ceramic fuse



Photo is representative

Product features

- Ceramic tube time delay fuse
- 250 Vac/125 Vdc, 0.25 A to 30 A
- Compact 3AB footprint:
1/4" x 1 1/4" (6.3 x 32 mm)
- Cartridge and axial lead versions available
- Fuse accessories (cartridge version):

<u>1Axxxx</u>	<u>HBH-I/</u>		
	<u>HBV-I</u>	<u>HTB</u>	<u>HK</u>
<u>HKP</u>	<u>HMR</u>	<u>HGA</u>	<u>HTJ</u>
<u>HRK</u>	<u>HHB</u>	<u>HFA</u>	<u>HHK</u>
<u>HHN</u>	<u>HFB</u>	<u>HHJ</u>	<u>S-4000</u>

Agency information

- UL Listed Card: MDA 1/4 A - 20 A (Guide JDYX, File E19180)
- UL Recognized Card: MDA 25 A - 30 A (Guide JDYX2, File E19180)
- CSA Certification Card: MDA 1/4 A - 20 A (Class No. 1422-01)
- CSA Component Acceptance: MDA 25 A - 30 A (Class No. 1422-30)



Applications

Primary circuit protection:

- LED and general lighting
- LED/LCD televisions
- Appliances and white goods
- Printers and peripherals
- Test equipment
- Uninterruptible power supplies (UPS)

Environmental compliance



Ordering part number

BK-MDA-BV-30-R

Packaging prefix _____
Family name _____
Option code _____
Ampere rating _____
RoHS compliance _____

Packaging prefix

Blank-

MDA-XXX-R: 5 pieces in tin tray.
MDA-V-XXX-R, MDA-BV-XXX-R : 4 pieces in tin tray.

BK-

MDA-XXX-R, MDA-V-XXX-R, MDA-BV-XXX-R:
100 pieces in a box.

TR-

MDA-V-XXX-R: 500 pieces on reel.

Option code

-B

Board washable

-V

Axial leads



Powering Business Worldwide

Electrical characteristics

Rating	% Amp rating	Opening time
250 mA to 30 A	100%	4 hours
250 mA to 30 A	135%	60 minutes maximum
250 mA to 30 A	200%	120 seconds maximum

Product specifications

Part number	Current rating (A)	Voltage rating (Vac)	Voltage rating (Vdc)	Interrupting rating @ rated voltage ¹	Typical resistance ² (mΩ)	Typical voltage drop ³ (mV)	Typical melting ⁴ I ² t (A ² sec)
MDA-1/4-R	0.25	250	-	200 A @ 250 Vac, 10000 A @ 125 Vac	9100	2900	0.28
MDA-1/2-R	0.50	250	-	200 A @ 250 Vac, 10000 A @ 125 Vac	2600	1650	1.2
MDA-3/4-R	0.75	250	-	200 A @ 250 Vac, 10000 A @ 125 Vac	520	495	0.42
MDA-1-R	1.0	250	-	200 A @ 250 Vac, 10000 A @ 125 Vac	380	470	0.90
MDA-1-1/2-R	1.5	250	-	200 A @ 250 Vac, 10000 A @ 125 Vac	190	370	3.4
MDA-2-R	2.0	250	-	200 A @ 250 Vac, 10000 A @ 125 Vac	120	295	8.8
MDA-2-1/2-R	2.5	250	125	200 A @ 250 Vac, 10000 A @ 125 Vac 10000 A @ 125 Vdc	66	246	7.2
MDA-3-R	3.0	250	125	200 A @ 250 Vac, 10000 A @ 125 Vac 10000 A @ 125 Vdc	48	215	15.9
MDA-4-R	4.0	250	125	200 A @ 250 Vac, 10000 A @ 125 Vac 10000 A @ 125 Vdc	31	176	37.2
MDA-5-R	5.0	250	125	200 A @ 250 Vac, 10000 A @ 125 Vac 10000 A @ 125 Vdc	23	173	65
MDA-6-R	6.0	250	125	200 A @ 250 Vac, 10000 A @ 125 Vac 10000 A @ 125 Vdc	18	166	98.1
MDA-7-R	7.0	250	125	200 A @ 250 Vac, 10000 A @ 125 Vac 10000 A @ 125 Vdc	15	158	135
MDA-8-R	8.0	250	125	200 A @ 250 Vac, 10000 A @ 125 Vac 10000 A @ 125 Vdc	13	162	188
MDA-10-R	10	250	125	200 A @ 250 Vac, 10000 A @ 125 Vac 10000 A @ 125 Vdc	9.5	142	332
MDA-12-R	12	250	125	750 A @ 250 Vac, 10000 A @ 125 Vac 10000 A @ 125 Vdc	7.6	128	125.2
MDA-15-R	15	250	125	750 A @ 250 Vac, 10000 A @ 125 Vac 10000 A @ 125 Vdc	5.7	107	336.8
MDA-20-R	20	250	125	1500 A @ 250 Vac, 10000 A @ 125 Vac 10000 A @ 125 Vdc	4.1	95	483.5
MDA-25-R	25	250	125	1500 A @ 250 Vac, 10000 A @ 125 Vac 10000 A @ 125 Vdc	3.1	105	734.7
MDA-30-R	30	250	125	1500 A @ 250 Vac, 10000 A @ 125 Vac 10000 A @ 125 Vdc	2.5	110	1096.7

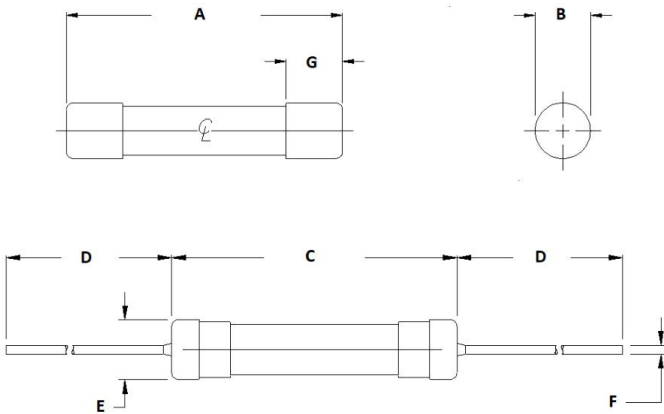
1. Interrupting ratings measured at 70% ~ 80% power factor on AC, (20 A and 30 A, 90% - 100% power factor on AC).

2. Typical resistance measured at <10% of rated current at +25 °C

3. Typical voltage drop measured at +25 °C and rated current

4. Typical melting: (< 10 A, I²t measured at 10 x rated current), (> 12 A, I²t measured at interrupting rating and rated voltage)

Dimensions- mm
Drawing not to scale



Cartridge	
Dimensions	Size
A	31.75 ± 0.79
B	6.35 ± 0.1
G	4.8 ref for 10 A and below 6.48 ref for above 10 A

Axial lead	
Dimensions	Size
C	32.82 ± 0.79
D	38.1mm ref
E	6.76 ref
F	0.81 ± 0.05 for 15 A and below 1.02 ± 0.05 for 20 A and above

General specifications

Operating temperature: -55 °C to +125 °C with proper derating factor applied.
Mechanical shock test 1/4 A to 10 A: MIL-STD 202 method 213. Condition C
Mechanical shock test 12 A to 30 A: MIL-STD 202G method 213. Condition J
Vibration test 1/4 A to 30 A: MIL-STD-202 method 204, test condition C

Packaging information

Packaging prefix	Description
Blank	MDA-XXX-R: 5 pieces in tin tray.
	MDA-V-XXX-R, MDA-BV-XXX-R: 4 pieces in tin tray.
BK-	MDA-XXX-R, MDA-V-XXX-R, MDP-BV-XXX-R: 100 pieces in a box.
TR-	MDA-V-XXX-R: 500 pieces on reel.