

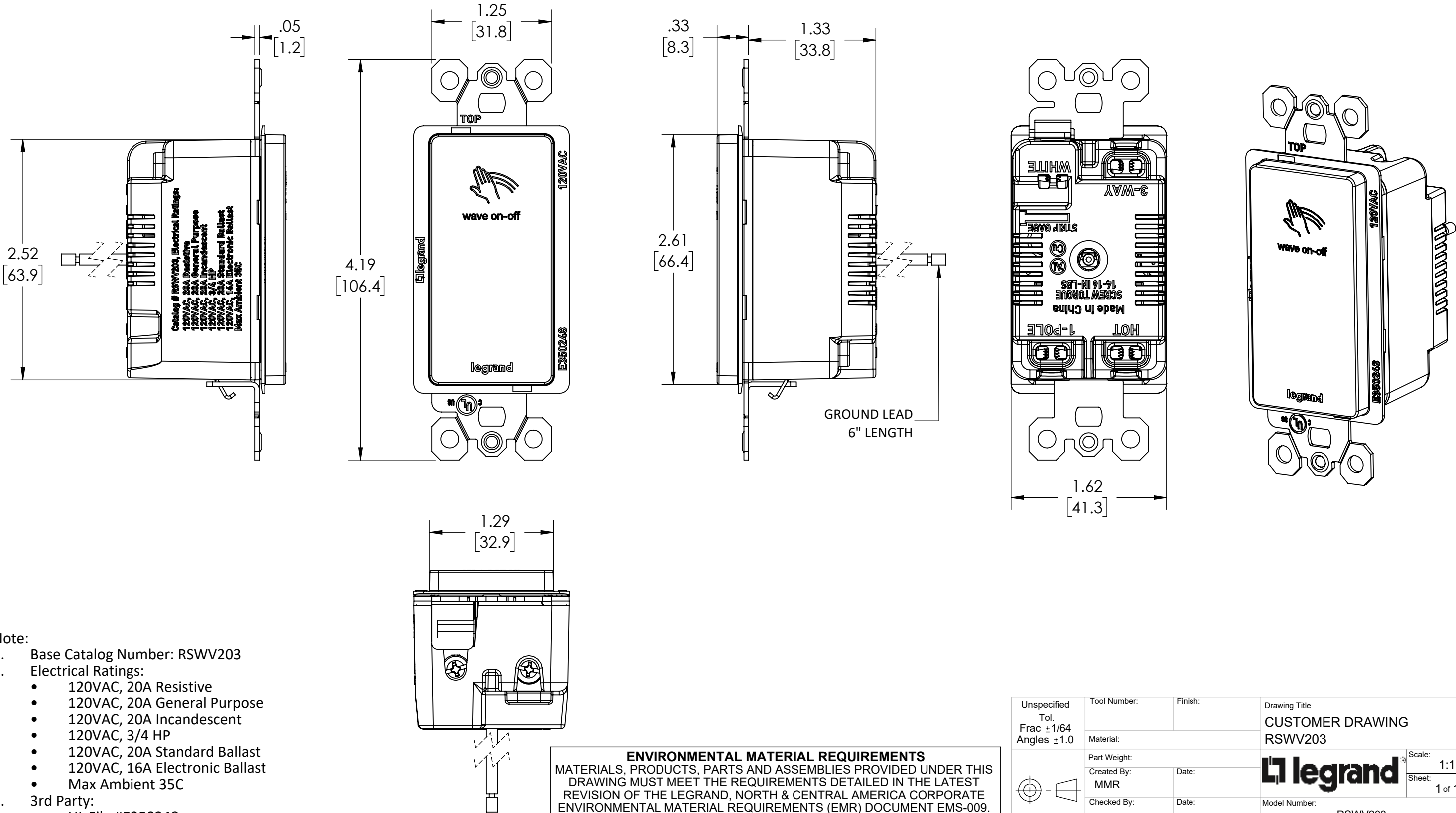
4

3

2



1

REVISIONS				
ZONE	REV.	DESCRIPTION	DATE	APPROVED
	A	PRELIMINARY RELEASE	6/25/2021	



- Note:
1. Base Catalog Number: RSWV203
 2. Electrical Ratings:
 - 120VAC, 20A Resistive
 - 120VAC, 20A General Purpose
 - 120VAC, 20A Incandescent
 - 120VAC, 3/4 HP
 - 120VAC, 20A Standard Ballast
 - 120VAC, 16A Electronic Ballast
 - Max Ambient 35C
 3. 3rd Party:
 - UL File #E350248
 4. Termination: Backwire
 5. Legrand reserves the right to change specifications without notice.

ENVIRONMENTAL MATERIAL REQUIREMENTS
MATERIALS, PRODUCTS, PARTS AND ASSEMBLIES PROVIDED UNDER THIS DRAWING MUST MEET THE REQUIREMENTS DETAILED IN THE LATEST REVISION OF THE LEGRAND, NORTH & CENTRAL AMERICA CORPORATE ENVIRONMENTAL MATERIAL REQUIREMENTS (EMR) DOCUMENT EMS-009. ANY DEVIATION FROM THE EMR REQUIREMENTS MUST BE APPROVED BY AN AUTHORIZED REPRESENTATIVE OF LEGRAND PRODUCT ENGINEERING IN WRITING. THE LATEST EMR DOCUMENT IS AVAILABLE ON REQUEST.

Unspecified Tol. Frac ±1/64 Angles ±1.0	Tool Number:		Finish:	Drawing Title CUSTOMER DRAWING RSWV203	
	Material:			<div>Scale: 1:1 Sheet: 1 of 1</div>	
	Part Weight:				
	Created By: MMR		Date:		Model Number: RSWV203
	Checked By:		Date:		
	Do Not Scale Drawing	NOTICE: Proprietary and confidential information of Pass & Seymour/Legrand. Reproduction or disclosure prohibited under penalty of law.			P&S Drawing No. CAD3184-PS-RSWV203