



## Conix® II LED Track Lighting

LED efficiency in a contemporary classic design

**juno®**









# A timeless classic, now a contemporary hit

**The proprietary Juno Conix series has always been one of our most popular track lights, offering timeless classical styling with a touch of contemporary flair. With the introduction of a complete family of LED powered fixtures, Conix has come to represent the state-of-the-art in retail, commercial, and residential lighting.**

Thoroughly up-to-date in every respect, the new Conix II LED fixtures present a sleek, sculpted aesthetic while raising the bar for track light performance and efficiency. Five signature fixture types offer outputs ranging from 1,100 lumens to 5,000 lumens, requiring just 11 watts to 52 watts input, respectively. They consume far less energy than equivalent halogen or ceramic metal halide light sources and deliver superior beam quality along with a 50,000/hour rated life.

Conix II LED produces crisp, white light with chromaticity within a 3-step MacAdam Ellipse. Available color temperatures include 2700K, 3000K, 3500K, and 4000K with superb color rendering capabilities. All five fixture types are compatible with a variety of Juno line voltage track systems and can be ordered in a choice of stunningly uniform, field-changeable beam spreads.



The elegant Conix II LED features durable, all-metal construction finished in lustrous white, black, or silver finishes. The fixture footprint is minimized by attaching the track head to a vertical, side-mount housing that contains the LED driver. With 360° rotation and more than 90° vertical aiming, these fixtures deliver extraordinary functionality. All wiring is fully concealed.

Conix II LED is the work of our LED Product Development Team, which is comprised of some of the industry's most talented LED specialists. Each fixture in the family was designed, engineered, and assembled in the USA and conforms to the very highest standards. A full five-year warranty is further testament to the superb quality of these fixtures.



## Juno Conix II T261L LED Track Lighting

The miniature T261L Conix II LED far exceeds the performance of, and consumes 60% less energy than, an equivalent 50-watt halogen MR16 while lasting more than eight-times longer.

### T261L, 11 Watts



- Small and compact, this elegant little fixture requires only 11 watts to produce up to 1,100 lumens
- Performance even surpasses 20W MR16 CMH while providing more than four-times additional rated life
- Produces highly consistent light in 2700K, 3000K, 3500K, and 4000K color temperatures
- CRI choices include 80 CRI minimum, 90 CRI minimum or SpectralWhite



#### Features

- High performance LED array provides exceptional reliability and performance, as well as chromaticity within a 3-step MacAdam Ellipse for fixture-to-fixture color consistency
- LED driver is contained in a side-mount, vertical housing to minimize overall fixture footprint
- 50,000-hour rated service life yields many years of maintenance-free operation
- Interchangeable, computer-designed TIR optics are available in spot, narrow flood, flood and wide flood beam spreads
- Optional SpectralWhite color/white enhancing versions offer 90+ CRI, rendering colors richly and making whites appear naturally brilliant
- Optional 16W WarmDim® version is available, offering 90 CRI minimum and mimics halogen dimming (3000K - 1800K)
- Dimmable using a variety of factory-approved dimmers (see specifications)
- Integral, bayonet-mount accessory holder accommodates one accessory
- Compatible with all Juno line voltage track systems and standard adapter accessories
- Available with a variety of alternate track adapters, providing compatibility with most commonly encountered competitor track systems
- ENERGY STAR® Certified; DesignLights Consortium® Qualified; assembled in the USA





## Juno Conix II T262L & T263L LED Track Lighting

Compact and contemporary, these highly efficient fixtures produce accurate, color consistent light in 2700K, 3000K, 3500K, and 4000K color temperatures with multiple CRI choices. Light output and beam distribution exceeds that of equivalent CMH fixtures, but Conix II LEDs last up to four-times longer with superior lumen maintenance. The 21-watt T263L has a slightly wider driver housing than the less powerful 16-watt T262L, but since they both feature the same-sized track head, the T263L provides a very compact footprint for a 2,000 lumen track fixture and they can be mixed together for a seamless visual aesthetic.



### T262L, 16 Watts



- Produces up to 1,675 brilliant lumens while consuming a mere 16 watts
- Utilizes less than 1/3 of the energy of halogen equivalents
- CRI choices include 80 CRI minimum, 90 CRI minimum or 97 CRI minimum

### T263L, 21 Watts



- Produces up to 2,100 brilliant lumens while consuming a mere 21 watts
- Approximates the light output and distribution of 39W CMH fixtures, but lasts four-times longer with significantly better lumen maintenance
- CRI choices include 80 CRI minimum, 90 CRI minimum or 97 CRI minimum



#### Both Feature

- High performance LED array provides exceptional reliability and performance, as well as chromaticity within a 3-step MacAdam Ellipse for fixture-to-fixture color consistency
- LED driver is contained in a side-mount, vertical housing to minimize overall fixture footprint
- 50,000-hour rated service life yields many years of maintenance-free operation
- Precision-designed, custom reflectors feature faceted/dimpled surface to ensure properly mixed colors in spot, narrow flood, or flood beam spreads; accessory reflectors can be easily changed in the field
- Dimmable using a variety of factory approved dimmers (see specifications)
- Finish options include black, silver or white
- Integral, bayonet-mount accessory holder accommodates up to two accessories
- Compatible with all Juno line voltage track systems and standard adapter accessories
- Available with a variety of alternate track adapters, providing compatibility with most commonly encountered competitor track systems
- ENERGY STAR® Certified; DesignLights Consortium® Qualified; assembled in the USA



## Juno Conix II T265L & T267L LED Track Lighting

A little larger than the other fixtures in the line, the T265L and T267L feature the same sleek, contemporary shape as the rest of the Conix II family. The T267L shares the same size conical housing as the T265L with a slightly larger driver housing. These powerful track fixtures produce accurate, color-consistent light in 2700K, 3000K, 3500K, and 4000K color temperatures with 80 CRI minimum; high CRI versions which offer 90 CRI minimum are also available.

### T265L, 36 Watts



- Produces up to 3,800 lumens while consuming a mere 36 watts
- Choice of Spot, Narrow Flood or Flood beam spreads



### T267L, 52 Watts



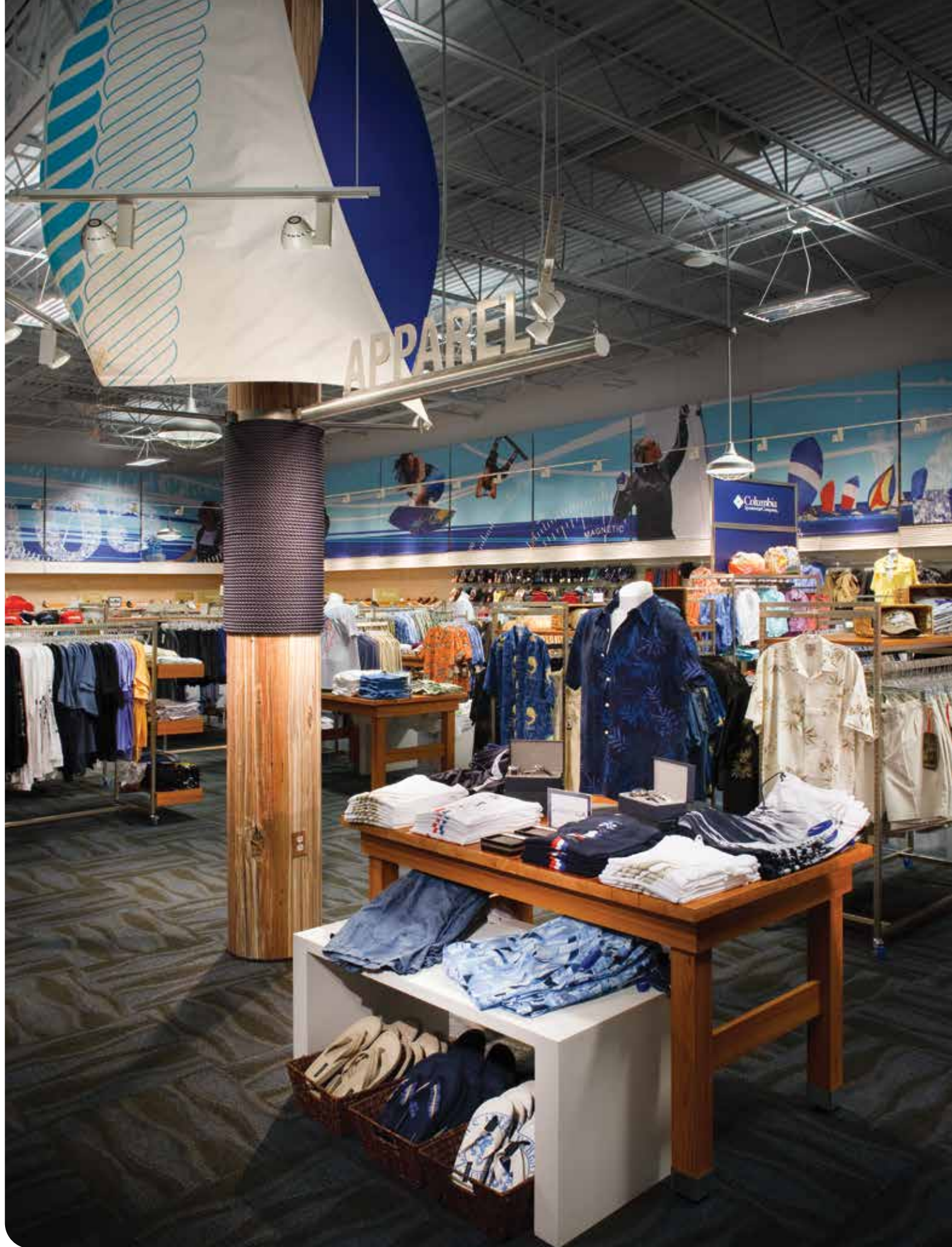
- Produces up to 5,000 lumens while consuming only 52 watts
- Choice of Spot, Narrow Flood, Flood or Wide Flood beam spreads

#### Both Feature

- High performance LED array provides exceptional reliability and performance; chromaticity within a 3-step MacAdam Ellipse offers excellent fixture-to-fixture color consistency (T265L is 2-step)
- LED driver is contained in a side-mount, vertical housing to minimize overall fixture footprint
- 50,000-hour rated service life yields many years of maintenance-free operation
- CRI choices include 80 CRI minimum, 90 CRI minimum or 90 CRI SpectralWhite (T265L only)
- Precision-designed, custom reflectors feature faceted/dimpled surface to ensure properly mixed colors in spot, narrow flood, or flood beam spreads; accessory reflectors can be easily changed in the field
- Dimmable using a variety of factory-approved dimmers (see specifications)
- Finish options include black, silver or white
- Integral, bayonet-mount accessory holder accommodates up to two accessories
- Compatible with all Juno line voltage track systems and wide adapter accessories
- Available with a variety of alternate track adapters, providing compatibility with most commonly encountered competitor track systems
- ENERGY STAR® Certified; DesignLights Consortium® Qualified; assembled in the USA







Conix II LED Track Lighting

# Introducing the “green” machine



---

One of the best things about choosing eco-friendly lighting like the Conix II LED is that in the course of doing the right thing for the environment, you are also saving on energy and operating costs.

---

Ultra-efficient LEDs help reduce the amount of carbon emissions we put into the air, while at the same time reducing our energy bills. And with an extraordinarily long service life of 50,000 hours, LEDs can operate virtually maintenance-free for 11 years\* in a typical retail setting, dramatically reducing re-lamping and labor costs. Still greater savings accrue from reduced HVAC costs resulting from the fact that cool-operating LEDs project virtually no heat in their light beam.

Furthermore, LEDs contain no mercury, lead, or other toxins that can be harmful to both you and the environment, so no special (and expensive) disposal procedures are required. LEDs output nearly no UV emissions that can damage fade-sensitive materials, and they are infrared-free and RoHS compliant.

A Conix II LED track fixture is a “green” machine that can help you save on energy and operating expenses as it helps save the environment. And if you are concerned about complying with today’s challenging energy codes and green initiatives, there is no better solution.

\*Based on 12-hours operation per day, seven days a week.

**Photo Credit:**

Cover: Toronto Maple Leafs, Air Canada Centre, Toronto, Canada (Paul Nieboer Lighting, Designer, David Whittaker Photography)



©2021 Acuity Brands Lighting, Inc. The marks appearing in this catalog are trademarks of Acuity Brands Lighting, Inc. Products shown in this brochure may be covered by U.S. and international patents and patents pending. Specifications subject to change without notice. Printed in the U.S.A.