

Rittal – The System.

Faster – better – everywhere.

► Sheet Steel Wiring Plan Pockets for TS, CM, SE, PC, TP pedestal – PS 4116.000

Date : May 29, 2018

ENCLOSURES

POWER DISTRIBUTION

CLIMATE CONTROL

IT INFRASTRUCTURE

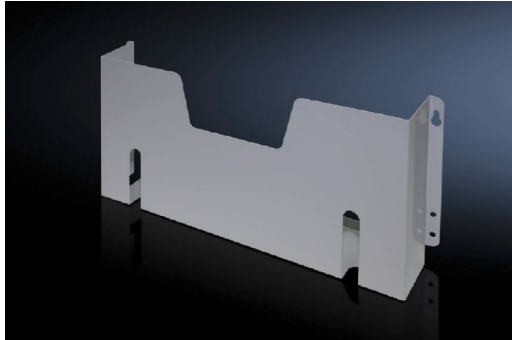
SOFTWARE & SERVICES

FRIEDHELM LOH GROUP



Sheet Steel Wiring Plan Pockets for TS, CM, SE, PC, TP pedestal – PS 4116.000

created: 29.05.2018 build on www.rittal.com/us-en



Product description

Description: Fastened to tubular door frames at any height.

Color: RAL 7035

Supply includes: Assembly components

Product features

Dimensions: Depth: 90 mm (3.5 ")

Suitable for door width: 600 mm (24 ")

Clearances: Clearance height: 210 mm (8.3 ")
Clearance width: 455 mm (18 ")

Packaging unit: 1 pc(s).

Weight/packaging unit: 2.16 kg (4.8 lb.)

EAN: 4028177091818

Customs tariff number: 73269098

ETIM 6.0: EC000317

ETIM 5.0:	EC000317
eCl@ss 8.0/8.1:	27189267
eCl@ss 7.0/7.1:	27189267
eCl@ss 6.0/6.1:	27189267
eCl@ss 5.1/5.1.4:	27189236
Product description (long):	PS Wiring plan pockets, for TS, CM, SE, PC, TP pedestal, sheet steel, for door width: 600 mm, D: 90 mm