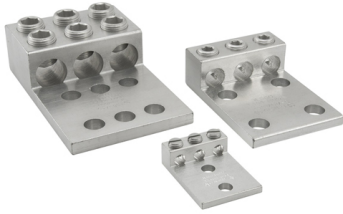


**SKU:** T3A4-250N

**UPC:** 0783669907193

**Features & Benefits:**

**Description:** Aluminum Mechanical Lug, Dual Rated, Conductor Range 250-6, 3 Ports, 4 Holes, 1/2in Bolt Size, 1-3/4in Hole Spacing, Tin Plated, UL, CSA



## Specs

### Additional Class Attributes

Connection	Mechanical
Contains DE-OX®	No
Mounting Hole Type	Thru
Number of Conductors	3
Number of Mounting Holes	4
Number of Poles	1
Number of Ports / Wireways	3

### Dimensions

Dimension G (IN)	0.625
Drive Size Main	5/16
Drive Type Main	Internal Hex
Height (IN)	1.187
Height BX (IN)	2.25
Height (mm)	30.1498
Length (IN)	4
Length (mm)	101.6
Mounting Bolt/Stud Size (mm)	304.8
Mounting Hole Diameter (IN)	0.563
Mounting Hole Diameter (mm)	14.3002
Mounting Hole Spacing (IN)	1.75
Mounting Hole Spacing (mm)	44.45
Tang Length (IN)	3
Tang Length (mm)	76.2
Tang Thickness (IN)	0.312
Tang Thickness (mm)	7.9248
Tang Width (IN)	2.813
Tang Width (mm)	71.4502
Weight (LB)	0.474
Weight BX (LB)	1.3744
Width (IN)	2.813
Width BX (IN)	5
Width (mm)	71.4502

### Material and Finish

Conductor Material	Copper
Connector Finish	Tin

Insulation	NA
Material	Aluminum
Wire Binding Hardware Finish	Tin
Wire Binding Hardware Material	Aluminum

### Additional Technical Specifications

Conductor Type	Stranded
----------------	----------

### Bolt and Screw Sizes

Mounting Bolt/Stud Size	1/2
Number of Wire Binding Screws per Port	1
Wire Binding Screw Size	5/8
Wire Binding Torque	275

### General

Bag Quantity	1
Carton Quantity Description	STD PACK QTY 1
Direct Burial	No
Dual Rated	Yes
NEMA Code	S-588-3
UPC Code	78366990719

### Testing Standards

CSA File Number	LR-29601
CSA Standard	C22.2 No. 65-03
Prop65 Compliance	This product is in compliance with Prop65. It is not known to contain any chemicals associated with this regulation
UL Control Number	453G
UL / CULUS Specification	UL 486A/B Listed
UL File Number	E6207

### Environment and Temperature

Temperature Rating	90°C
--------------------	------

### Color

Color	Silver
-------	--------

### Conductor Ranges

Conductor Range AL Solid (Secondary, tap, load)	NA
Conductor Range AL Stranded (Primary, run, main, line)	250 kcmil - 6 Str
Conductor Range AL Stranded (Secondary, tap, load)	NA
Conductor Range CU Solid (Primary, run, main, line)	NA
Conductor Range CU Solid (Secondary, tap, load)	NA
Conductor Range CU Stranded (Primary, run, main, line)	250 kcmil - 6 Str
Conductor Range CU Stranded (Secondary, tap, load)	NA
Conductor Range AL Solid (Primary, run, main, line)	NA
Wire Combinations	NA

**Voltage**

**Voltage Rating**

35 kV