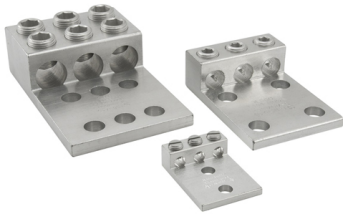


SKU: T3A2-0

UPC: 0783669895902

Features & Benefits:

Description: Aluminum Mechanical Lug, Conductor Range 1/0-14, 3 Ports, 2 Holes, 3/8in Bolt Size, Tin Plated, UL, CSA



Specs

Additional Class Attributes

Connection	Mechanical
Contains DE-OX®	No
Mounting Hole Type	Thru
Number of Conductors	3
Number of Mounting Holes	2
Number of Poles	1
Number of Ports / Wireways	3

Dimensions

Dimension G (IN)	0.344
Drive Size Main	NA
Drive Type Main	Slotted
Height (IN)	0.875
Height BX (IN)	2.25
Height (mm)	22.225
Length (IN)	2.906
Length (mm)	73.8124
Mounting Bolt/Stud Size (mm)	965.2
Mounting Hole Diameter (IN)	0.437
Mounting Hole Diameter (mm)	11.0998
Mounting Hole Spacing (IN)	1
Mounting Hole Spacing (mm)	25.4
Tang Length (IN)	2.156
Tang Length (mm)	54.7624
Tang Thickness (IN)	0.25
Tang Thickness (mm)	6.35
Tang Width (IN)	1.938
Tang Width (mm)	49.2252
Weight (LB)	0.246
Weight BX (LB)	2.3808
Width (IN)	1.938
Width BX (IN)	5
Width (mm)	49.2252

Material and Finish

Conductor Material	Aluminum
Connector Finish	Tin

Insulation	NA
Material	Aluminum
Wire Binding Hardware Finish	Tin
Wire Binding Hardware Material	Aluminum

Additional Technical Specifications

Conductor Type	Solid
----------------	-------

Bolt and Screw Sizes

Mounting Bolt/Stud Size	3/8
Number of Wire Binding Screws per Port	1
Wire Binding Screw Size	7/16
Wire Binding Torque	2/0 - 2 AWG = 50

General

Bag Quantity	1
Carton Quantity Description	STD PACK QTY 6
Direct Burial	No
Dual Rated	Yes
NEMA Code	S-588-3
UPC Code	78366989590

Testing Standards

CSA File Number	LR-29601
CSA Standard	C22.2 No. 65-03
Prop65 Compliance	This product is in compliance with Prop65. It is not known to contain any chemicals associated with this regulation
ROHS Indicator	IND
UL Control Number	453G
UL / CULUS Specification	UL 486A/B Listed
UL File Number	E6207

Environment and Temperature

Temperature Rating	90°C
--------------------	------

Color

Color	Silver
-------	--------

Conductor Ranges

Conductor Range AL Solid (Secondary, tap, load)	NA
Conductor Range AL Stranded (Primary, run, main, line)	1/0 Str - 14 Str
Conductor Range AL Stranded (Secondary, tap, load)	NA
Conductor Range CU Solid (Primary, run, main, line)	10 Sol - 14 Sol
Conductor Range CU Solid (Secondary, tap, load)	NA
Conductor Range CU Stranded (Primary, run, main, line)	1/0 Str - 14 Str
Conductor Range CU Stranded (Secondary, tap, load)	NA
Conductor Range AL Solid (Primary, run, main, line)	10 Sol - 14 Sol



Wire Combinations

NA

Voltage

Voltage Rating

35 kV