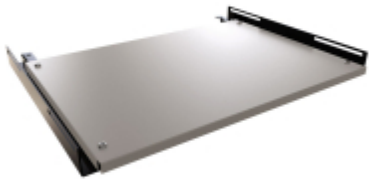


Four Post Mounting Fixed Chassis Shelf *RASC Series*

85 lbs (39 kg) Weight Capacity

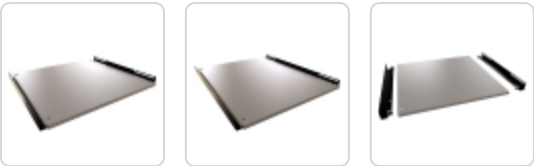
Features

- Constructed of 18-gauge steel (shelf) and 14-gauge (brackets).
- The shelf can be used as a permanently mounted support shelf or as a pull-out chassis.
- Will also accept type **RSLIDE** equipment rail slides for pull-out applications.
- Includes all mounting hardware.
- Tested to nearly double the suggested load rating of 85 lbs (39 kg).
- Finished in a smooth white powder paint for high visibility.
- TAA-compliant for GSA Schedule purchases.
- RoHS and REACH compliant.
- Manufactured in North America.



i Please note that to mount this product you need to have two (2) pairs of combination rails within your cabinet. This product does not mount to the front and back of the rails like traditional rack mounting shelves.

Gallery



Accessories

- Chassis Sliding Rack Rail Kit
 - Fixed Shelf Rail Adapter
- Extender Bracket for Sliding Shelves
 - Mounting Hardware

Part No.	Overall Dimensions			Shelf Dimensions		
	Height	Width	Depth	Height	Width	Depth
RASC1912WH2	1.32	17.85	13.74	0.50	16.65	12.00
RASC1916WH2	1.32	17.85	16.00	0.50	16.65	16.00
RASC1922WH2	1.32	17.85	22.00	0.50	16.65	22.00

Data subject to change without notice

