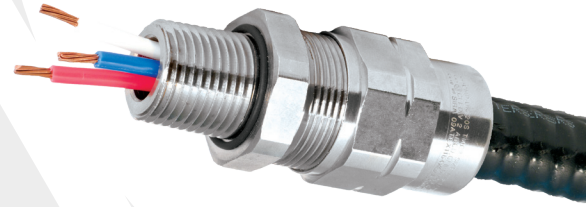


TMC2

TMC2 ALUMINUM GLOBALLY APPROVED, HAZARDOUS (CLASSIFIED) LOCATION CABLE GLAND

FOR MC, MC-HL, INTERLOCKED & TECK ARMORED CABLES

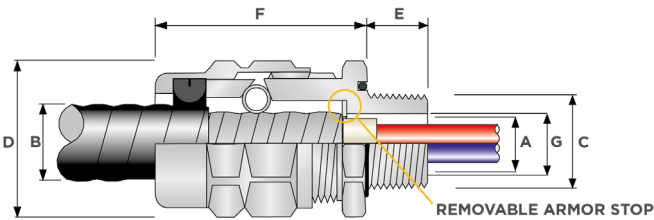
- Simplified two part design
- Compact slim profile
- Independent sealing and armor clamping
- Simple, sequential installation process
- No disassembly required
- O-ring face seal as standard
- Hub not required
- Low Impedance Copper Plated Stainless Steel 360° Grounding Spring
- -60°C to +110°C (-76°F to +230°F)
- Globally marked, cCSAus, IECEx, ATEX and UKEX



IP66	NEMA 4X
EMC	+110°C ↑ -60°C
AEx e	AEx t
Ex e	Ex t

TECHNICAL CLASSIFICATION	
DESIGN SPECIFICATION	BS 6121:Part 1:1989, IEC 62444, EN 62444
MECHANICAL CLASSIFICATION*	Impact = Level 8, Cable Anchorage = Type D
ENCLOSURE PROTECTION	IK10 to IEC 62262 (20 joules) Brass and Stainless Steel only
INGRESS PROTECTION RATING**	IP66
NEMA RATING**	Type 4X
CABLE GLAND MATERIAL	Copper Free (<0.4%) Aluminum, Stainless Steel, Electroless Nickel Plated Brass
SEAL MATERIAL	CMP SOLO LSF Halogen Free Thermoset Elastomer
CABLE TYPE	Corrugated & Interlocked Metal Clad Armor (MC) or TECK90, Continuously Welded Metal Clad Armor (MC-HL), ACIC-HL, ACWU90-HL, RC90-HL, RA90-HL
ARMOR CLAMPING	Low Impedance Copper Plated Stainless Steel 360° Grounding Spring
JACKET SEALING TECHNIQUE	CMP Load Retention Seal
SEALING AREA(S)	Cable Outer Jacket

* Mechanical and Electrical Classifications applied as per IEC 62444 and EN 62444
 ** When CMP installation accessories are used. Refer to www.cmp-products.com for further information.



GLOBAL PRODUCT CERTIFICATION			
ATEX CERTIFICATE	CML18ATEX1335X	IECEx CERTIFICATE	IECEx CML 18.0192X
UKEX CERTIFICATE	CML 21UKEX1262X		
CODE OF PROTECTION	⊕ II 2G 1D, Ex eb IIC Gb, Ex ta IIIC Da	CODE OF PROTECTION	Ex eb IIC Gb, Ex ta IIIC Da
COMPLIANCE STANDARDS	EN 60079-0,7	COMPLIANCE STANDARDS	IEC 60079-0,7,31
cCSAus CERTIFICATE	2194053		
CSAus CODE OF PROTECTION	Class II, Div 1 and 2, Groups E, F, and G; Class III, Div 1 and 2; Encl. Type 4X; Ex e II; Class I, Zone 1, AEx e II; AEx ta IIIC		
cCSA CODE OF PROTECTION	Class I, Div 2, Groups A, B, C, and D; Class II, Div 1 and 2, Groups E, F, and G; Class III, Div 1 and 2; Encl. Type 4X; Ex e II; Class I, Zone 1, AEx e II; AEx ta IIIC Class I, Zone 1, AEx e II; AEx ta IIIC		
COMPLIANCE STANDARDS	CAN/CSA-C22.2 No 0-10,18-04,25-1966,30-M1986,174-M1984,94-M91, ANSI/UL 2225, ANSI/UL 50, ANSI/UL 514B, CAN/CSA-E61241-1-1, CAN/CSA-C22.2 No.60079-0:07,7:07		
ECAS CERTIFICATE	20-02-06425	UKrSEPRO CERTIFICATE	CLJ 19.0371X
EAC CERTIFICATE	TC RU C-GB.AA87.B.00487		
CODE OF PROTECTION	1Ex e IIC GB X, Ex ta IIIC Da X, IP66		
RETIE APPROVAL NUMBER	03866	CCOE / PESO (INDIA) CERTIFICATE	P444949
CCC CERTIFICATE	2020322313003284		
MARINE APPROVALS	LRS: 01/00172, DNV: TAE000000Y, ABS: 20-2022051-PDA, BV: 43180		



ORDER REFERENCE (NPT SUFFIX REQUIRED)			ENTRY THREAD *C		MINIMUM THREAD LENGTH *E	CABLE ARMOR DIAMETER *A				CABLE JACKET DIAMETER *B		THRU BORE *G	ACROSS FLATS *D	ACROSS CORNERS *D	NOMINAL ASSEMBLY LENGTH *F	SHROUD	APPROX WEIGHT ALUMINUM (oz)
ALUMINUM	NICKEL PLATED BRASS	STAINLESS STEEL	NPT	NPT OPTION		ARMOR STOP IN		ARMOR STOP OUT		MIN	MAX	MAX	MAX	MAX			
						MIN	MAX	MIN	MAX								
TMC2050A075	TMC2050NB075	TMC2050SS075	1/2"	-	0.78	0.42	0.55	0.55	0.63	0.50	0.75	0.51	1.20	1.32	2.44	PVC06	2.29
TMC2075A075	TMC2075NB075	TMC2075SS075	-	3/4"	0.80	0.42	0.55	0.55	0.63			0.51				PVC09	
TMC2050A099	TMC2050NB099	TMC2050SS099	1/2"	-	0.78	0.60	0.65	0.65	0.89	0.69	0.99	0.61	1.48	1.63	2.96	PVC09	3.00
TMC2075A099	TMC2075NB099	TMC2075SS099	-	3/4"	0.80	0.60	0.78	0.78	0.89			0.75					
TMC2075A118	TMC2075NB118	TMC2075SS118	3/4"	-	0.80	0.79	0.86	0.86	1.10	0.87	1.18	0.82	1.81	1.99	3.15	PVC11	5.11
TMC2100A118	TMC2100NB118	TMC2100SS118	-	1"	0.98	0.79	0.98	0.98	1.10			0.95					
TMC2100A137	TMC2100NB137	TMC2100SS137	1"	-	0.98	0.94	1.08	1.08	1.28	1.02	1.37	1.04	2.05	2.26	3.55	PVC15	6.70
TMC2125A137	TMC2125NB137	TMC2125SS137	-	1 1/4"	1.01	0.94	1.18	1.18	1.28			1.14					
TMC2125A162	TMC2125NB162	TMC2125SS162	1 1/4"	-	1.01	1.22	1.35	1.35	1.50	1.30	1.62	1.31	2.36	2.60	3.59	PVC18	8.82
TMC2150A162	TMC2150NB162	TMC2150SS162	-	1 1/2"	1.03	1.22	1.42	1.42	1.50			1.38					
TMC2125A190	TMC2125NB190	TMC2125SS190	1 1/4"	-	1.01	-	-	1.51	1.72	1.57	1.90	1.37	2.56	2.82	3.59	PVC37	9.45
TMC2150A190	TMC2150NB190	TMC2150SS190	-	1 1/2"	1.03	-	-	1.51	1.72			1.54					
TMC2150A200	TMC2150NB200	TMC2150SS200	1 1/2"	-	1.03	1.57	1.70	1.70	1.88	1.65	2.00	1.61	2.75	3.03	3.76	PVC21	11.06
TMC2200A200	TMC2200NB200	TMC2200SS200	-	2"	1.06	1.57	1.70	1.70	1.88			1.65					
TMC2150A233	TMC2150NB233	TMC2150SS233	-	1 1/2"	1.03	-	-	1.81	2.21	1.90	2.33	1.61	2.95	3.25	3.97	PVC23	12.77
TMC2200A233	TMC2200NB233	TMC2200SS233	2"	-	1.06	-	-	1.81	2.21			2.03	3.54	3.89		PVC28	
TMC2250A233	TMC2250NB233	TMC2250SS233	-	2 1/2"	1.57	-	-	1.81	2.21			2.07					
TMC2200A272	TMC2200NB272	TMC2200SS272	-	2"	1.06	2.14	2.46	2.17	2.61	2.27	2.72	2.40	3.54	3.89	4.10	PVC28	24.69
TMC2250A272	TMC2250NB272	TMC2250SS272	2 1/2"	-	1.57	2.14	2.46	2.46	2.61			2.40	4.33	4.76		PVC31	
TMC2300A272	TMC2300NB272	TMC2300SS272	-	3"	1.63	2.14	2.46	2.46	2.61			2.72	4.33	4.76	4.67	PVC31	42.68
TMC2300A325	TMC2300NB325	TMC2300SS325	3"	-	1.63	2.49	2.78	2.78	2.97	2.62	3.25	2.72	4.33	4.76	4.67	PVC31	42.68
TMC2350A325	TMC2350NB325	TMC2350SS325	-	3 1/2"	1.69	2.49	2.78	2.78	2.97			2.72					
TMC2350A376	TMC2350NB376	TMC2350SS376	3 1/2"	-	1.69	2.95	3.45	3.45	3.54	3.16	3.76	3.38	4.84	5.32	4.95	LSF33	53.44
TMC2400A376	TMC2400NB376	TMC2400SS376	-	4"	1.73	2.95	3.45	3.45	3.54			3.38					
TMC2400A425	TMC2400NB425	TMC2400SS425	4"	-	1.73	-	-	3.56	3.94	3.70	4.25	3.59	5.23	5.75	5.16	LSF34	59.19

Order code example: TMC2050A075 - "TMC2" (Type Gland) - "050" (1/2" NPT Thread) - 'A' (Material Aluminum) - "075"(Max Cable Diameter 0.75")

Dimensions are displayed in inches unless otherwise stated