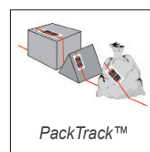
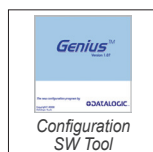


## Industrial Bar Code Scanners



## APPLICATIONS

- Automated warehousing
- Medium conveyor sorting
- Reading on forklift trucks
- Picking systems
- Automated shop floor

## ADVANTAGES

- Extended reading range from 300 to 2500 mm thanks to FLASH™ dynamic focus technology
- DIGITECH™ technology permits full software control over signal processing parameters. Scanner setup can therefore be optimized simply loading optimized software recipes, thus enabling excellent performance in all reading conditions
- ACR4™ reconstruction technology increases the maximum tilt angle and overall read rate on damaged barcodes
- Available with integrated software programmable Oscillating Mirror and built-in connectivity to Ethernet, Profibus and DeviceNet
- Easy and simple configuration thanks to Genius™ multi-language software tool

## HIGHLIGHTS

- FLASH™ dynamic focus technology
- Reading range from 300 to 2500 mm
- ACR4™ reconstruction technology improves reading of damaged barcodes
- DIGITECH™ technology enables excellent reading performance
- PACKTRCK™ technology to minimize the gap between objects and increase system productivity
- Linear and integrated Oscillating Mirror versions
- Built-in connectivity to Ethernet / Profibus / DeviceNet
- Display and keyboard for scanner monitoring and diagnostics

## GENERAL DESCRIPTION

DS6400 is an industrial fixed position barcode reader specifically designed for the needs of various Auto ID applications in manufacturing and logistics. DS6400 is based on the same concept as DS6300: a complete modular solution in terms of reading performance, built-in connectivity, ease of use and maintenance.

The DS6400 embeds a linear motor providing a dynamic focus system called FLASH™, fully controlled via software, which covers an impressive reading range of over 2 meters. FLASH™ is capable of moving the focus position from the minimum to the maximum position in less than 10 ms.

DS6400 features a practical display with keyboard that increases the scanner's ease of use by showing barcode data read (local echo), statistics and diagnostic information; moreover, it offers built-in connectivity to Ethernet, DeviceNet and Profibus networks.



## MODELS AND ACCESSORIES

MODELS	
Order No.	Description
931351093	DS6400-100-010 DYN. FOCUS, LINEAR, M/S
931351095	DS6400-100-011 DYN. FOCUS, LINEAR, PROFIBUS
931351097	DS6400-100-012 DYN. FOCUS, LINEAR, ETHERNET
931351099	DS6400-100-015 DYN. FOCUS, LINEAR, DEVICENET
931351103	DS6400-105-010 DYN. FOCUS, OSC. MIRROR, M/S
931351105	DS6400-105-011 DYN. FOCUS, OSC. MIRROR, PROFIBUS
931351107	DS6400-105-012 DYN. FOCUS, OSC. MIRROR, ETHERNET
931351109	DS6400-105-015 DYN. FOCUS, OSC. MIRROR, DEVICENET

ACCESSORIES	
Order No.	Description
93A201100	GFC-60 90° MIRROR
93A201102	GFC-600 90° MIRROR CLOSE DISTANCE
93ACC1721	FBK-6000 FAST BRACKET KIT (2 PCS)

## TECHNICAL DATA

	DS6400-100-01X	DS6400-105-01X
DIMENSIONS	110 x 113 x 99 mm (4.33 x 4.45 x 3.9 in)	113 x 180 x 104.5 mm (4.45 x 7.08 x 4.11 in)
WEIGHT	1.5 kg. (3.3 lb)	2.0 kg. (4.4 lb)
CASE MATERIAL	Aluminum	
OPERATING TEMPERATURE	0 to 40 °C (32 to 104 °F),	
STORAGE TEMPERATURE	-20 to 70 °C (-4 to 158 °F)	
HUMIDITY	90% non condensing	
VIBRATION RESISTANCE	IEC 68-2-6 test FC 1.5mm; 10 to 55 Hz; 2 hours on each axis	
SHOCK RESISTANCE	IEC 68-2-27 test EA 30 G; 11 ms; 3 shocks on each axis	
PROTECTION CLASS	IP64 for standard models; IP65 on request	
LIGHT SOURCE	Visible laser diode (630 to 680 nm)	
SCANNING SPEED	600 to 1200 scan/s SW programmable	
RESOLUTION	Down to 0.20 mm (8 mils)	
READABLE SYMBOLOGIES	Code 2/5, Code39, Code93, Code128, EAN/UPC, EAN128, Codabar, Pharmacode, ISBN128	
MULTILABEL READING	Up to 10 different symbologies during the same reading phase	
COMMUNICATION INTERFACES	Main Port: RS232/RS485 up to 115.2 Kbit/s	
	Auxiliary Port: RS232 up to 115.2 Kbit/s	
OTHER AVAILABLE INTERFACES	Lonworks (Master/Slave), Ethernet, Profibus, DeviceNet	
DIGITAL INPUTS	Three SW programmable and One "Encoder", optocoupled, NPN/PNP	
DIGITAL OUTPUTS	Three SW programmable, optocoupled, event driven	
DISPLAY & KEYPAD	LCD 16 x 2 characters & 3 keys	
LED INDICATORS	Power On, Phase On, Data Tx	
DEVICE PROGRAMMING	Windows™ based SW (Genius™) via serial or Ethernet link	
	Serial Host Mode Programming sequences	
OPERATING MODES	'On-line', 'Serial On-line', 'Continuous', 'Test', 'PackTrack™'	
LASER CLASSIFICATION	Class 2 - EN60825-1; Class II - CDRH	
LASER CONTROL	Safety system to turn laser off in cases of motor slowdown or failure	
POWER SUPPLY	15 to 30 VDC	
POWER CONSUMPTION	15 W typical, 20 W max	