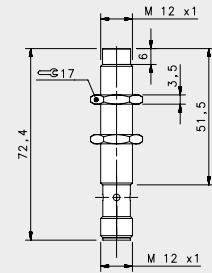
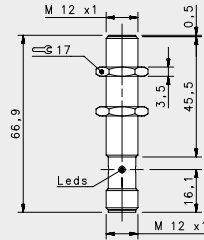


WELD FIELD IMMUNE M12



FIELD IMMUNE STAINLESS STEEL

FLUSH

NON FLUSH

M12 conn

M12 conn

2 mm

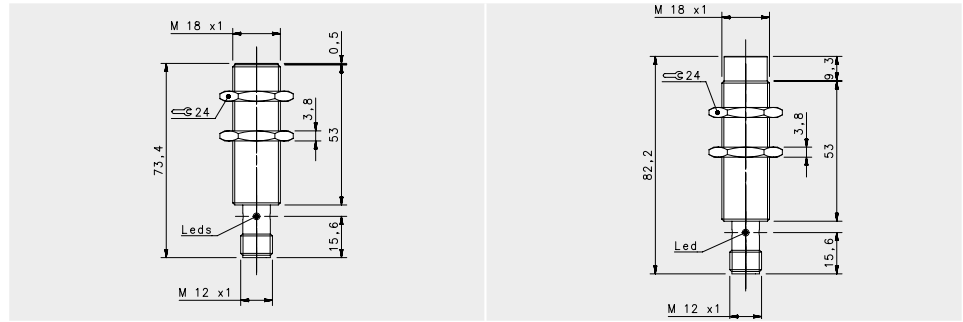
4 mm

NOMINAL SWITCHING DISTANCE

| 10-30 Vdc | PNP/NPN NO-NC | 4 wires | order No. | --- | --- | --- |
|-----------------|-------------------|----------|-----------|---------------------------|---------------------------|-----|
| 10-30 Vdc | PNP NO | 3 wires | order No. | IS-F12-S1-S2 95B065360 | IS-F12-T1-S2 95B065370 | --- |
| 10-30 Vdc | PNP NC | 3 wires | order No. | --- | --- | --- |
| 10-30 Vdc | NPN NO | 3 wires | order No. | --- | --- | --- |
| 10-30 Vdc | NPN NC | 3 wires | order No. | --- | --- | --- |
| 10-30 Vdc | PNP NO-NC | 4 wires | order No. | --- | --- | --- |
| 10-30 Vdc | NPN NO-NC | 4 wires | order No. | --- | --- | --- |
| 10-30 Vdc | NO-NC | 2 wires | order No. | --- | --- | --- |
| 20-250 Vac/Vdc | NO | 2 wires | order No. | --- | --- | --- |
| 20-250 Vac/Vdc | NC | 2 wires | order No. | --- | --- | --- |
| 20-250 Vac | NO | 2/3wires | order No. | --- | --- | --- |
| 10-30 Vdc | Analog 0-20 mA | 3 wires | order No. | --- | --- | --- |
| NAMUR amplifier | NAMUR | 2 wires | order No. | --- | --- | --- |

| | | |
|---------------------------|--|--|
| Nominal Voltage | 10-30 Vdc | 10-30 Vdc |
| Residual Ripple | < 10% | < 10% |
| Hysteresis | < 15% | < 15% |
| Max. Output Current | 200 mA | 200 mA |
| Min. Output Current | < 10mA | < 10mA |
| Residual Current | < 0,1 mA | < 0,1 mA |
| Voltage Drop | < 1,5V | < 1,5V |
| Operation Led | Present | Present |
| Switching Frequency | 2000 Hz | 1000 Hz |
| Start Up Delay | < 0,1 ms | < 0,1 ms |
| Repeatability | < 1% | < 1% |
| Short Circuit Protection | Present (self-resetting) | Present (self-resetting) |
| Electric Protection | Against polarity reversal inductive loads | Against polarity reversal inductive loads |
| Temperature Limit | (-25 ... +70 °C) | (-25 ... +70 °C) |
| Protection Degree | IP67 | IP67 |
| Cable Length | --- | --- |
| Cable Section | --- | --- |
| Housing Material | Stainless-Steel | Stainless-Steel |
| Active face | PTFE | PTFE |
| Tightening torque | 10 Nm | 10 Nm |
| Weight - Cable Output | --- | --- |
| Weight - Connector Output | 25g | 23g |

WELD FIELD IMMUNE M18



FIELD IMMUNE STAINLESS STEEL

FLUSH

NON FLUSH

M12 conn

M12 conn

5 mm

8 mm

NOMINAL SWITCHING DISTANCE

| | | | | FLUSH M12 conn 5 mm | NON FLUSH M12 conn 8 mm |
|-----------------|-------------------|-----------|-----------|---------------------------|-------------------------------|
| 10-30 Vdc | PNP/NPN NO-NC | 4 wires | order No. | --- | --- |
| 10-30 Vdc | PNP NO | 3 wires | order No. | IS-F18-S1-S2 95B065380 | IS-F18-T1-S2 95B065390 |
| 10-30 Vdc | PNP NC | 3 wires | order No. | --- | --- |
| 10-30 Vdc | NPN NO | 3 wires | order No. | --- | --- |
| 10-30 Vdc | NPN NC | 3 wires | order No. | --- | --- |
| 10-30 Vdc | PNP NO-NC | 4 wires | order No. | --- | --- |
| 10-30 Vdc | NPN NO-NC | 4 wires | order No. | --- | --- |
| 10-30 Vdc | NO-NC | 2 wires | order No. | --- | --- |
| 20-250 Vac/Vdc | NO | 2 wires | order No. | --- | --- |
| 20-250 Vac/Vdc | NC | 2 wires | order No. | --- | --- |
| 20-250 Vac | NO | 2/3 wires | order No. | --- | --- |
| 10-30 Vdc | Analog 0-20 mA | 3 wires | order No. | --- | --- |
| NAMUR amplifier | NAMUR | 2 wires | order No. | --- | --- |

| | | |
|---------------------------|--|--|
| Nominal Voltage | 10-30 Vdc | 10-30 Vdc |
| Residual Ripple | < 10% | < 10% |
| Hysteresis | < 15% | < 15% |
| Max. Output Current | 200 mA | 200 mA |
| Min. Output Current | < 10mA | < 10mA |
| Residual Current | < 0,1 mA | < 0,1 mA |
| Voltage Drop | < 1,5V | < 1,5V |
| Operation Led | Present | Present |
| Switching Frequency | 1000 Hz | 500 Hz |
| Start Up Delay | < 0,2 ms | < 0,5 ms |
| Repeatability | < 1% | < 1% |
| Short Circuit Protection | Present (self-resetting) | Present (self-resetting) |
| Electric Protection | Against polarity reversal inductive loads | Against polarity reversal inductive loads |
| Temperature Limit | (-25 ... +70 °C) | (-25 ... +70 °C) |
| Protection Degree | IP67 | IP67 |
| Cable Length | --- | --- |
| Cable Section | --- | --- |
| Housing Material | Stainless-Steel | Stainless-Steel |
| Active face | PTFE | PTFE |
| Tightening torque | 30 Nm | 30 Nm |
| Weight - Cable Output | --- | --- |
| Weight - Connector Output | 94g | 91g |