

LED Linear Tube

1800 Lumen T8 LED 5000K 48 inch
Type B Double End for Direct Wire - Coated



PRODUCT DESCRIPTION

14 watt EarthBulb direct wire LED linear T8 eliminates the ballast for maximum energy savings. Available in 5000K with 300 degree beam angle. Great light output and perfect for replacement of T8 fluorescent tubes. This linear tube provides 1800 lumens and has a CRI of 82. This lamp is engineered for high lumen maintenance over its 50,000 hour rated. To install, simply remove the existing fluorescent ballast and direct wire the line voltage. Direct wire quickly, no lamp holder modifications necessary, just run the black (load) to the one end and white (neutral) to the other. This product is shatterproof coated. Operates on 120-277V. DLC listed product.

PRODUCT FEATURES

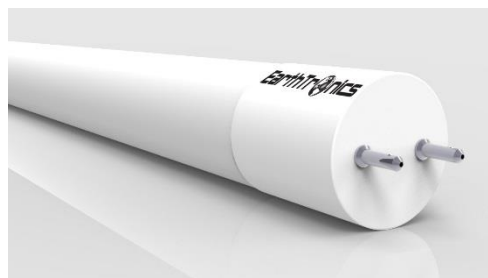
- Easily retrofit T8, 4 foot tubes
- DLC listed product
- Direct wire without modifying lamp holders
- 120/277VAC 50/60Hz, direct wire
- Provides 1800 lumens
- Chipset provides 5000K daylight with a high color rating of 82
- RoHS Certified
- UL Classified UL 1598C (US & Canada)
- Shatterproof coated for use in food service area

MODEL NUMBER: LT814850BDECT

ORDER CODE: 11184

DLC PRODUCT ID: PL8PXWDX0NO2

PACK SIZE: 25



DIMENSIONS:

- Diameter: 1 inch
- Nominal Length: 48 inches

Electrical	
Watt	14
Power Factor	> 0.90
Total Harmonic Distortion	< 20%
Voltage	120/277VAC 50/60Hz
Base Type	G13
Operating Temperature Range	-20°C to 45°C
Light	
Initial Lumens	1800
Lumens per Watt	128
Color Temperature	5000K
Color Rendering (CRI)	82
Beam Angle	300°
Agency Approvals	
UL/ETL	Yes
DLC	Yes
RoHS	Yes
FCC	Yes, FCC 47 Part 18 CLASS A
Product Details	
Warranty	5 years, 10 year limited
Mercury Content	0
Diameter	1"
Nominal Length	48"
Rated Life	50,000 hours