

DUCTFIX

WIRING DUCT RIVETS

Material

Polyamide 6

Color

R4 - BLUE

R6N - NATURAL

R6O - ORANGE



Catalog Number	Pieces per Carton
R4	250
R6N	250
R6O	250

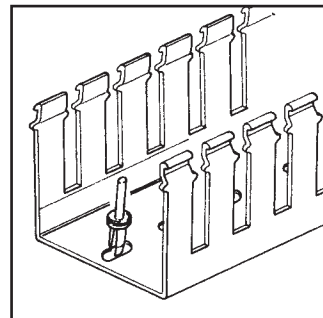
MAIN FEATURES

- Elastic Vibration - dampening head
- Good temperature resistance
- Excellent mechanic properties
- Extremely short installation time
- Insulating - Functional - Easy To Apply

DUCTFIX

- Installs quick and easy using the B4 or B6 rivet tool.
- Can be used to install all types of wiring duct with standard mounting holes.
- Hole size R4 - 5/32" (4 mm) - R6 - 7/32" (5.5 mm)

- R4 - use B4 or RT4 tool
- R6N - use B6 tool
- R6O - use RT6 tool



B4-B6 RT4 - RT6

RIVET TOOLS

Color

B4 - RED

B6 - YELLOW

RT4 - BLUE

RT6 - ORANGE

Catalog Number	Pieces per Carton
B4*	1
B6*	1
RT4**	1
RT6**	1

* All plastic

** All metallic - note different rivets for RT6

Functional and sturdy



ZP1-ZP2

MOUNTING INSERTS CABLE ATTACHMENTS

Material

Polyamide 6

Color

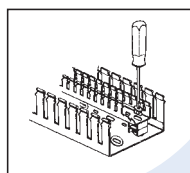
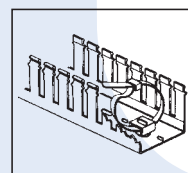
WHITE



Catalog Number	Pieces per Carton
ZP1	100
ZP2	50

With a simple quarter turn, ZP1 is used to mount components and SEP-E separators inside duct. Also ZP1 can be used to mount smaller sizes of duct inside larger sizes, thus achieving separation of circuits with different voltages and/or functions.

With a simple quarter turn ZP2 can be mounted inside duct. By stacking, mounting levels at different heights are achieved. For tightening a wire bundle inside duct, pass a cable tie through ZP2.





Available after July **NEW DESIGN**



DINOSAUR

FLEXIBLE DUCTS SELF-ADHESIVE

Dinosaur Duct is a unique product offering from IBOCO that is a flexible, resilient and efficient harnessing solution to your wiring needs.

For wiring to cabinet doors, from control panels and for electronic equipment.

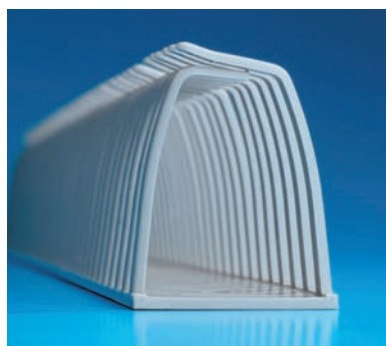
For that part of the cable run that leans against the side of the control cabinet.

- Due to the flexibility of the material individual wires can easily be added, or removed from total wires within the duct.
- Since Dinosaur has no cover it can accommodate cables in restricted space applications, and also effectively removes the need for cable ties.
- It can be used in extreme operating conditions (i.e. max. temp. up to 176°F) and has excellent resistance to radiation if exposed to a nuclear environment.
- Dinosaur withstands mechanical stress when installed (i.e. earthquake, falling equipment) while in the event of fire does not emit corrosive, nor toxic gases, and smoke development is minimal.
- The duct can be cut to desired length using scissors or knife.

When applying the Dinosaur with adhesive tape, it is necessary to make sure that the surface is perfectly clean and dry.

Catalog Number	Nominal Size	Lengths* per Carton
DN 25AG	.50 x .75	24
DN 35AG	1.00 x 1.38	24
DN 45AG	1.38 x 1.75	14

* Each length is 19.7 inches (500 mm)



Material

Polypropylene
self-extinguishing

Color

GREY
RAL 7030

