

# Portable Printers

BradyID.com/s34

## Portable Printer Comparison Guide

Use the following comparison guide to quickly see which printer best fits your application needs. Then turn to the following pages to find out more about each printer, compatible materials and print ribbons.



**BMP®21-PLUS Label Printer**  
See page 290



**BMP®41 Label Printer**  
See page 294



**BMP®53 Label Printer**  
See page 300

Printer Specifications	BMP®21-PLUS Label Printer	BMP®41 Label Printer	BMP®53 Label Printer
<b>Max Labels Per Day</b>	Average 100 labels/day	Average 250 labels/day	Average 500 labels/day
<b>Print Resolution</b>	203 dpi	300 dpi	300 dpi
<b>Print Technology</b>	Thermal transfer	Thermal transfer	Thermal Transfer
<b>Print Speed</b>	10mm/sec (0.4 in/sec)	133mm/sec (1.3in/sec)	25.4mm/sec (1/sec)
<b>Tape Widths (inches)</b>	Various sizes from 0.250" to 0.750"	Various sizes from 0.235" to 1.0"	Various sizes from 0.235" to 1.50"
<b>Tape Widths (mm)</b>	Various sizes from 6.4 mm to 19.1 mm	Various sizes from 5.969 mm to 25.4 mm	Various sizes from 6.4 mm to 38.1 mm
<b>Max Label Width</b>	0.75" (19.1 mm)	1.00" (25.4mm)	1.50" (38.1mm)
<b>Max Print Width</b>	0.63" (16 mm)	0.96" (24.4 mm)	1.44" (36.6 mm)
<b>Memory</b>	16MB, 10 Labels (2MB available for storage)	48 MB / Up to 25,000 Labels	48 MB / Up to 25,000 Labels
<b>Materials Supported</b>	M21- Series Cartridges 70+ Stock Parts	M-, MC-, MC1- Series Cartridges (1.00" and 0.75" height only) 100+ Stock Parts	M-, MC-, MC1- Series Cartridges (all sizes) 140+ Stock Parts
<b>Continuous vs Die Cut Labels</b>	Continuous Labels Only	Continuous and die cut labels	Continuous and die cut labels
<b>Connectivity Options</b>	Not Applicable	Yes	Yes
<b>PC Connectivity</b>	No	USB	USB, WiFi, LAN
<b>Software Compatibility</b>	No	Optional through USB	LabelMark® / CodeSoft™ Software
<b>File Transfer from PC to printer</b>	No	Yes - with Labelmark® Software	Yes, with Labelmark® Software
<b>Wireless Connectivity</b>	No	No	Yes
<b>Stand Alone Printing</b>	Yes	Yes	No
<b>Color Capability</b>	Single print color on a label	Single print color on a label	Single print color on a label
<b>Keyboard</b>	ABC or Cyrillic	QWERTY	Not Applicable
<b>Backlit Screen</b>	2" x 1", user adjustable backlit	2.5" x 1.4", user adjustable backlit	Not Applicable
<b>Text Sizes</b>	6-40 pt with Autosizing	4 to 103pt + autosizing	4 to 103pt + autosizing
<b>Multi-Line Print</b>	Yes	Yes	Yes
<b>Print Rotation</b>	No	Yes	Yes
<b>Serialization</b>	Yes	Yes	Yes
<b>Barcode</b>	39 and 128	39 and 128	39 and 128
<b>Symbols Categories</b>	104	450	450
<b>Portability</b>	Yes	Yes	Yes
<b>Label Types or Application Functions</b>	PermaSleeve® Heat Shrink Tubing, Permanent Polyester, Self-laminating Vinyl, Clear Polyester, High Performance Polyester, Nylon Cloth, Indoor/Outdoor Vinyl, Polypropylene	Adhesive Polyester, PermaSleeve® Heat Shrink Tubing, Polypropylene Tags, Self-laminating Vinyl, Metallized Polyester Ultra Aggressive Polyester, Repositional Vinyl Cloth, Nylon Cloth, Reflective Tape, Indoor/Outdoor Vinyl,	Polyester, Polyethylene Tag, Permasleeve® Heat Shrinking Tube, Tamper-Evident Vinyl, Polypropylene Tag, Permanent Polypropylene, Self-Laminating vinyl, Metallized Polyester, Self-Laminating Polyester, Staingerbondz™ Labels, Tissue Cassette Polyester, Ultra aggressive Polyester, High Performance Polyester, Freezerbondz™ Labels, Repositionable Vinyl Cloth, Reflective Tap, Indoor/Outdoor Vinyl
<b>Applications</b>	Basic labels for Wire and Cable ID, Datacomm and AV Labeling, Inside-panel Component Labeling, and General Industrial Labels for Maintenance, Production and Visual Workplace/Lean 5S.	Basic and Die Cut labels for Wire and Cable ID, Datacomm and AV labeling, Electrical ID, Panel ID, Product ID, Facility ID, Safety and Maintenance, General ID	Data Communications Labeling, Facility, Safety & Maintenance Identification, General & Industrial Labeling, Laboratory Identification, Panel Identification, Security Identification, Wire & Cable Marking
<b>Power Supply</b>	6 AA batteries, AC adapters: US 110V, UK 240V, Europe 220V, or Lithium Ion Rechargeable Battery	AC Power, rechargeable NiMH battery	AA Alkaline batteries (8), AC Power, or rechargeable lithium ion battery
<b>Weight</b>	1.66 lbs (0.75 kg)	2.6 lbs (1.2 kg)	2.6 lbs (1.2 kg)
<b>Warranty</b>	2 years	2 years	2 years

\* Test 3rd party software integration for intended application prior to purchase. Windows® is a registered trademark of Microsoft Corporation.

# BMP®41 Label Printer

BradyID.com/bmp41

Portable Printers



## BMP®41 LABEL PRINTER

### ONE AND DONE. BMP®41 Printer Does It All!

A rugged, handheld labeling solution that gives you the versatility of die-cut labels and continuous labels in one printer!

- Quick-load, drop-in cartridges for quick supply change and automatic label formatting
- Fast print speed of 1.3" per second
- Over 100 label parts in 11 materials
- 3/4" sleeves and 1" wide continuous output
- Drop tested rugged industrial bumpers with a grab and go grip to be on the move with you
- Large graphical LCD display with backlight to see exactly what you're printing
- Rechargeable NiMH battery, AA or AC adapter, for long lasting power supply
- Built-in wizard-style apps for wire ID, cable flags, terminal blocks, patch panels, breaker boxes and general ID

### BMP®41 Printer Specifications

<b>Max Labels Per Day</b>	Average 250 labels/day
<b>Print Resolution</b>	300 dpi
<b>Print Technology</b>	Thermal transfer
<b>Print Speed</b>	133mm/sec (1.3in/sec)
<b>Tape Widths (inches)</b>	Various sizes from 0.235" to 1.0"
<b>Tape Widths (mm)</b>	Various sizes from 5.969 mm to 25.4 mm
<b>Max Label Width</b>	1.00" (25.4mm)
<b>Max Print Width</b>	0.96" (24.4 mm)
<b>Memory</b>	48 MB / Up to 25,000 Labels
<b>Materials Supported</b>	M-, MC-, MC1- Series Cartridges (1.00" and 0.75" height only) 100+ Stock Parts
<b>Continuous vs Die Cut Labels</b>	Continuous and die cut labels
<b>Connectivity Options</b>	Yes
<b>PC Connectivity</b>	USB
<b>Software Compatibility</b>	Optional through USB
<b>File Transfer from PC to printer</b>	Yes - with Labelmark® Software
<b>Wireless Connectivity</b>	No
<b>Stand Alone Printing</b>	Yes
<b>Color Capability</b>	Single print color on a label
<b>Keyboard</b>	QWERTY
<b>Backlit Screen</b>	2.5" x 1.4", user adjustable backlight
<b>Text Sizes</b>	4 to 103pt + autosizing
<b>Multi-Line Print</b>	Yes
<b>Print Rotation</b>	Yes
<b>Serialization</b>	Yes
<b>Barcode</b>	39 and 128
<b>Symbols Categories</b>	450
<b>Portability</b>	Yes
<b>Label Types or Application Functions</b>	Adhesive Polyester, PermaSleeve® Heat Shrink Tubing, Polypropylene Tags, Self-laminating Vinyl, Metallized Polyester Ultra Aggressive Polyester, Repositional Vinnl Cloth, Nylon Cloth, Reflective Tape, Indoor/Outdoor Vinyl,
<b>Applications</b>	Basic and Die Cut labels for Wire and Cable ID, Datacomm and A/V labeling, Electrical ID, Panel ID, Product ID, Facility ID, Safety and Maintenance, General ID
<b>Power Supply</b>	AC Power, rechargeable NiMH battery
<b>Weight</b>	2.6 lbs (1.2 kg)
<b>Warranty</b>	2 years



### Online Video!

Visit [BradyID.com/bmp41](http://BradyID.com/bmp41) for more information or to view an online printer demo video.

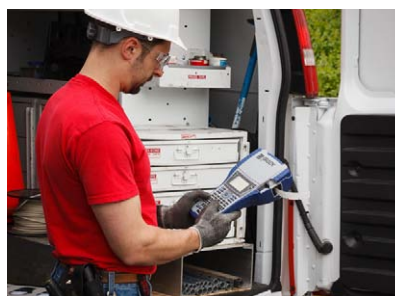
### Your Complete Printing Solution:

BMP41 cartridges with label and print ribbon .....page 298

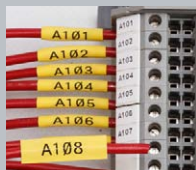
### BMP®41 Label Printer & Accessories

Catalog #	Description
BMP41	BMP41 Label Printer with Hard Case*
BMP41-KIT-VD	BMP41 Printer DataComm Starter Kit*
BMP41-KIT-EL	BMP41 Printer Electrical Starter Kit*
BMP41-KIT-GI	BMP41 Printer Facility ID Starter Kit*
BMP41-BATT	BMP41 Rechargeable Battery Pack
BMP41-QC	BMP41 External Battery Quick Charger
BMP41-AC	BMP41 AC Adapter / Battery Charger
BMP41-MAGNET	BMP41 Magnet Accessory
BMP41-HC	BMP41 Hard Case
BMP41-USB	BMP41 USB Cable

\*Printer ships with BMP41 printer, NiMH battery, AC adapter / charger, hard case, MC1-1000-595-WT-BK cartridge, USB cable, product & drivers CD, and quick start guide.



### Exceptional material variety and durability.



Electrical Labeling



Equipment Labeling



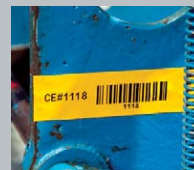
Self-Laminating Labels



Voice & Data Communications



PermaSleeve® Wire Marking



Indoor / Outdoor Vinyl Labels...and more!