

9 Multi-Gang Meter Sockets

400A Main 200A per Position Underground Service Main Stud Type

Product Specifications

- ◆ Underground service entrance positioning only.
- ◆ Two through six position models available
- ◆ Troughs are factory bussed for 400A from main lugs to the line side of all positions.
- ◆ Cable entry trough standard feature for ease of wiring.
- ◆ Left hand service entry only.
- ◆ Type 3R enclosure rating.
- ◆ CSA approved for copper or aluminum wiring.
- ◆ 4 Jaw configuration standard, optional 5th jaw available for 6 or 9 o'clock position mounting (See page 20).
- ◆ Compression (1/2" Stud) type main line and neutral lugs.

Product Selection

Table 25. 400A 600VAC Maximum Multi-Gang Meter Socket

Catalogue Number	Mains Amperage (A)	Per Position Amperage (A)	Meter Positions	Enclosure Rating	Bottom Knockouts (quantity & type)	Weight lbs (kg)	Dimensions in (mm)	Lug Capacity (Cu/Al)	
								Line	Load
2KU4CLX	400	200	2	Type 3R	(3)I, (1)P, (1)A	56 (25.4)	22-13/16 x 37-1/16 x 6-1/8 (579.4 x 941.4 x 155.6)	(2) 1/2" Stud	#6-250MCM
3KU4CLX			3		(4)I, (1)P, (1)A	71 (32.3)	22-13/16 x 46-5/16 x 6-1/8 (579.4 x 1176.3 x 155.6)		
4KU4CLX			4		(5)I, (1)P, (1)A	86 (39.1)	22-13/16 x 55-9/16 x 6-1/8 (579.4 x 1411.3 x 155.6)		
5KU4CLX			5		(6)I, (1)P, (1)A	101 (45.9)	22-13/16 x 66-13/16 x 6-1/8 (579.4 x 1697.0 x 155.6)		
6KU4CLX			6		(7)I, (1)P, (1)A	117 (53.2)	22-13/16 x 74-1/16 x 6-1/8 (579.4 x 1881.2 x 155.6)		

Table 26. Conduit Knockout Legend

Knockout Code [Ⓞ]	Conduit Knockout Sizes
A	1/2"
I	1-1/4", 1-1/2", 2", 2-1/2"
P	3", 3-1/2", 4"

Table 27. Neutral Lug Cable Capacities

Location	Cable Size (Cu/Al)
Main	(2) 1/2" Stud
Branch	#6-250MCM

[Ⓞ] To determine knockout locations and quantity refer to knockouts column in table 9 and location map below.

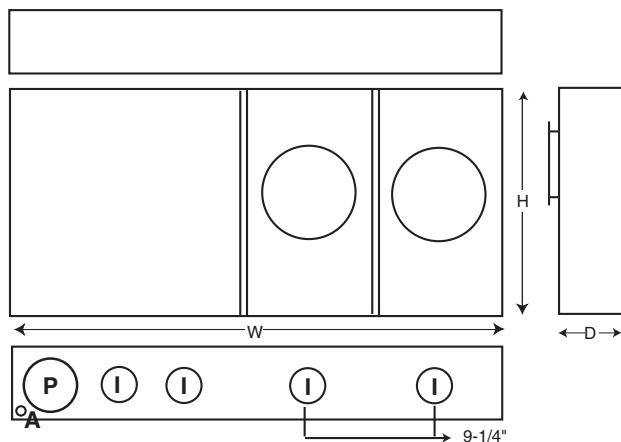
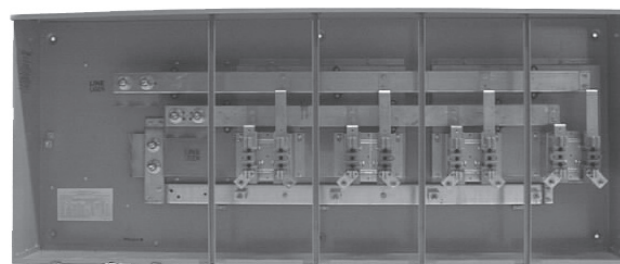


Figure 9. 400A Underground Service Multi-Gang Meter Socket Knockout Location Map



4KU4CLX