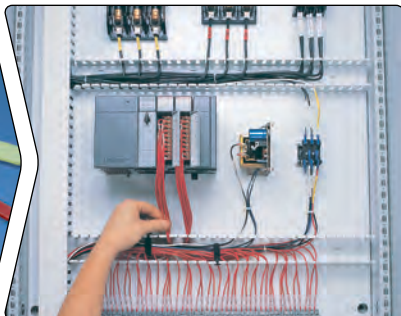
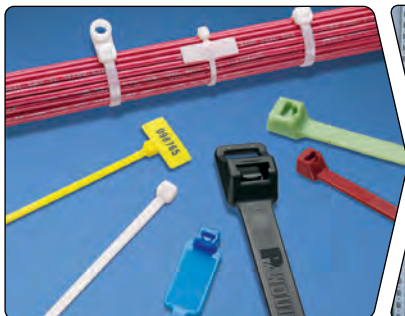


## Cable Tie Styles Overview

## Pan-Ty® Cable Ties

## Pages B1.6 – B1.35



- Designed for use in numerous applications to meet a variety of needs in the OEM, MRO, and construction markets
- Largest selection of styles, materials, and sizes
- One-piece construction for consistent performance and reliability
- Lowest threading force of any one-piece cable tie in the industry

## Super-Grip® Cable Ties

## Pages B1.36 – B1.40



- Designed for the strength requirements of the MRO and construction markets
- Thin, wide strap body – flexible, conforms to bundles
- Strong – withstands rough installation practices
- Grips wires tightly and resists lateral movement

## Dome-Top® Barb Ty Cable Ties

## Pages B1.41 – B1.53



- Approved for the demanding MRO and construction requirements as typified in the oil and gas markets
- Stainless steel barb provides consistent performance and reliability
- Infinitely adjustable for tight bundles throughout entire bundle range
- Dome-top head features unique patented design with smooth, round edges

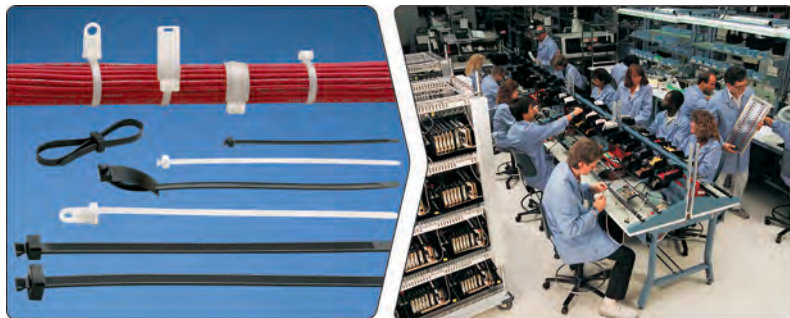
## Parallel-Entry Cable Ties

## Pages B1.54 – B1.62



- Designed for use in the OEM and transportation markets
- All parallel-entry ties provide a low profile head which avoids snags and reduces overall bundle size
- No protrusion of tie cut-off – protects workers' arms/hands
- Contour-Ty® Cable Ties have outside teeth and smooth, round edges to protect cable jacket – perfect for high vibration applications

## Sta-Strap® Cable Ties



## Pages B1.63 – B1.69

- Convenient and easy to use in OEM manual assembly operations
- Exclusive, two-piece design provides lowest threading force in the industry
- Use for normal bundling and through-panel applications
- Releasable prior to final tensioning and cut-off

## Network Cable Ties

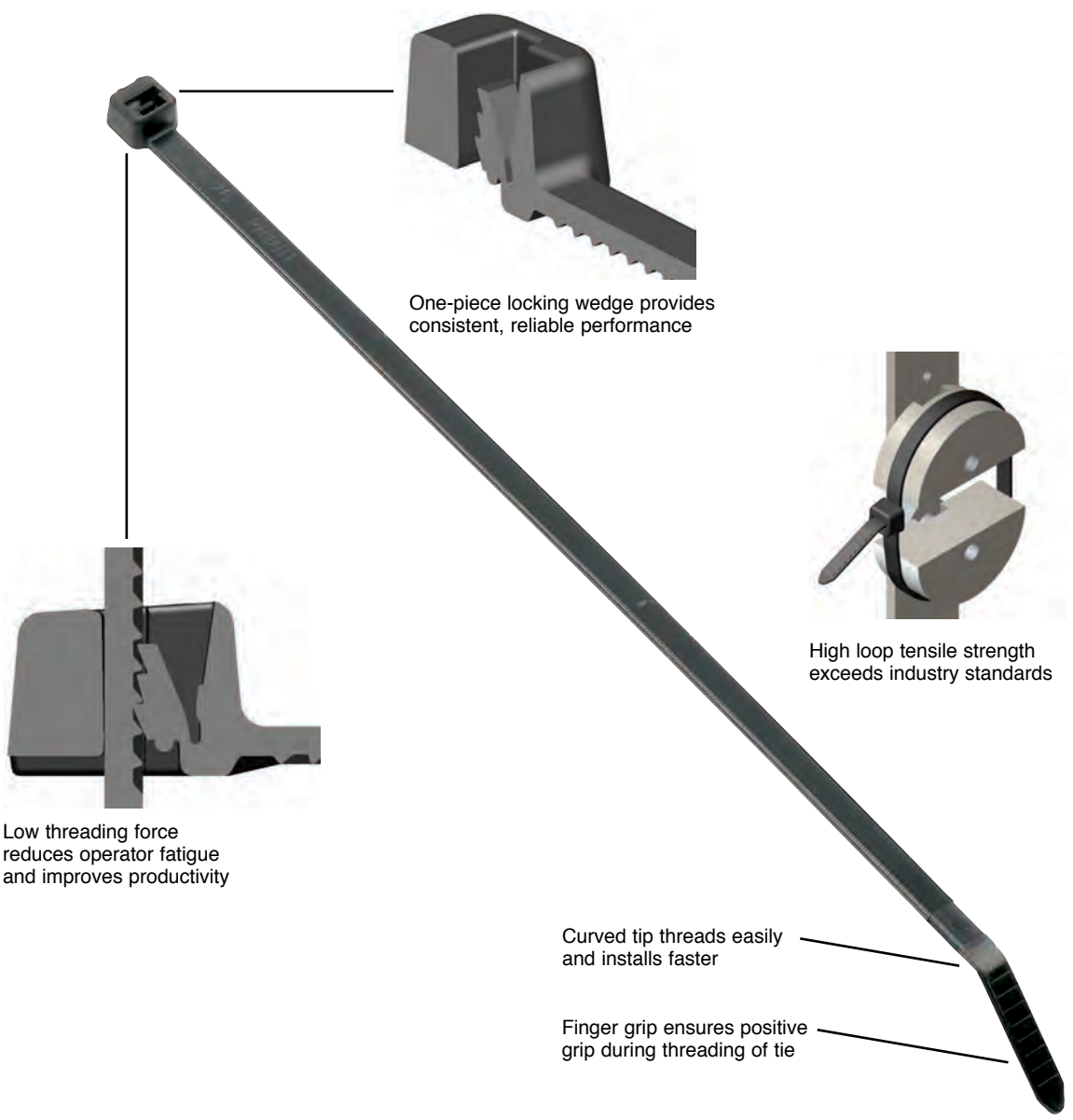


## Pages B1.81 – B1.88

- Ideal for the telecommunications, financial, education, and government markets
- Adjustable, releasable, and re-usable
- No risk of over-tensioning or damaging high performance network cables
- Variety of styles, sizes, and colors

Features and Benefits – Pan-Ty® Cable Ties

One-piece design for consistent performance and reliability.  
Available in lengths from 2.8 to 43.3 inches and a variety of styles, materials, and colors for specific applications.



Cable tie tools speed installation and reduce total installed cost.  
Visit [www.panduit.com/tools](http://www.panduit.com/tools).



Cable tie accessories are used to speed and simplify the mounting of wires, cables, and tubing.  
See pages B2.1 – B2.26.

## Selection Guide – Pan-Ty® Cable Ties



Material, Color (Suffix)	Style/Function	Part Number Prefix	Catalog Page
Nylon 6.6, Natural (No Suffix)	Locking Ties/Bundle	PLT	B1.8, 9
	Releasable Ties/Re-usable	PRT	B1.20
	Clamp Ties/Mount	PLC	B1.24
	Push Mount Ties/Mount	PLWP, PRWP, PLUP, PLP	B1.26, 28, 31
	Marker Ties/Identify	PLF, PLM	B1.32
Weather Resistant Nylon 6.6, Black (0)	Locking Ties/Bundle	PLT	B1.10, 11
	Releasable Ties/Re-usable	PRT	B1.21, 22
	Clamp Ties/Mount	PLC	B1.25
	Push Mount Ties/Mount	PLWP, PRWP, PLUP, PLP	B1.27 – B1.31
	Marker Ties/Identify	PLF, PLM	B1.32
Heat Stabilized Nylon 6.6, Black (30)	Locking Ties/Bundle	PLT	B1.12
	Releasable Ties/Re-usable	PRT	B1.21, 22
	Clamp Ties/Mount	PLC	B1.25
	Push Mount Ties/Mount	PLWP, PRLWP, PRWP, PLUP, PLP	B1.27 – B1.31
Heat Stabilized Weather Resistant Nylon 6.6, Black (300)	Locking Ties/Bundle	PLT	B1.13
Heat Stabilized Nylon 6.6, Natural (39)	Locking Ties/Bundle	PLT	B1.12
Flame Retardant Nylon 6.6, Black (60)	Locking Ties/Bundle	PLT	B1.14
Flame Retardant Nylon 6.6, Ivory (69)	Locking Ties/Bundle	PLT	B1.14
	Marker Ties/Identify	PLF, PLM	B1.32
Weather Resistant Nylon 12, Black (120)	Locking Ties/Bundle	PLT	B1.15
Polypropylene, Green (109)	Locking Ties/Bundle	PLT	B1.15
Weather Resistant Polypropylene, Black (100)	Locking Ties/Bundle	PLT	B1.16
	Releasable Ties/Re-usable	PRT	B1.23
HALAR▲, Maroon (702Y) TEFZEL■, Aqua Blue (76)	Locking Ties/Bundle	PLT	B1.16, 17
PEEK, Translucent Brown (71)	Locking Ties/Bundle	PLT	B1.18
Metal Detectable, Blue (86, 186)	Locking Ties/Bundle	PLT	B1.19

■ TEFZEL is a registered trademark of E.I. du Pont de Nemours and Company

▲ HALAR is a registered trademark of Solvay Solexis

## Part Number System for Pan-Ty® Cable Ties

PLT	2	S	—	C	
Type	Size	Cross Section	Screw Hole Size	Package Size	Material/Color
PLT = Locking Tie	Approx. Maximum Bundle Dia. (In.)	SM = Subminiature	(Clamp Ties Only)	Q = 25	See Page B1.33
PRT = Releasable Tie		M = Miniature	-S4 = #4 (M2.5)	L = 50	
PLC = Locking Clamp		I = Intermediate	-S6 = #6 (M3)	C = 100	
PLF = Locking Flag		S = Standard	-S8 = #8 (M4)	TL = 250	
PLM = Locking Marker		LH = Light-Heavy	-S10 = #10 (M5)	D = 500	
PLP = Locking Push Mount		H = Heavy	-S25 = 1/4 (M6)	M = 1000	
PLWP = Locking Wing Push Mount		EH = Extra-Heavy		VMR = 2 reels/2500 ea.	
PRLWP = Releasable Ladder Wing Push Mount				XMR = 2 reels/5000 ea.	
PRWP = Releasable Wing Push Mount					
PLUP = Locking Umbrella Push Mount					

## Pan-Ty® Lashing Ties – Weather Resistant Nylon 6.6

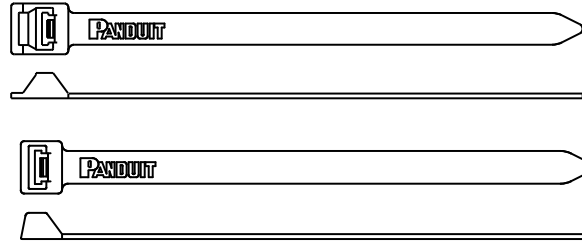
- Greater resistance to damage caused by ultraviolet light – indoor or outdoor use
- Typically used for heavy duty applications
- Among the strongest Pan-Ty® Cable Tie available
- Can be used with MCEH mounting clip, shown below



Lashing Tie



No Buckle Design

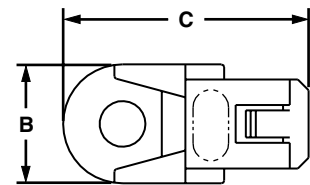
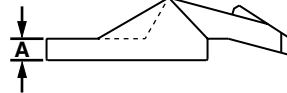
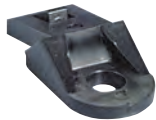


Part Number	Length		Width		Thickness		Max. Bundle Dia.		Min. Loop Tensile Str.		Recommended Installation Tool	Std. Pkg. Qty.	Std. Ctn. Qty.
	In.	mm	In.	mm	In.	mm	In.	mm	Lbs.	N			
Extra-Heavy Cross Section													
PLT2EH-Q0	9.0	229	0.500	12.7	0.075	1.9	2.00	51	250	1112	GS4EH, ST3EH	25	250
PLT5EH-Q0	20.1	511	0.500	12.7	0.075	1.9	5.00	127	250	1112		25	250
PLT6EH-Q0	22.2	564	0.500	12.7	0.075	1.9	6.00	152	250	1112		25	250
PLT8EH-Q0	28.3	719	0.500	12.7	0.085	2.2	8.00	203	250	1112		25	250
PLT10EH-Q0	34.2	869	0.500	12.7	0.085	2.2	10.00	254	250	1112		25	250
PLT12EH-Q0	40.1	1019	0.500	12.7	0.085	2.2	12.00	305	250	1112		25	250
Extra-Heavy Cross Section (No Buckle Design)													
PLT3EH-NB-C0	12.2	310	0.500	12.7	0.075	1.9	3.30	84	250	1112	GS4EH, ST3EH	100	1000
PLT5EH-NB-C0	19.8	503	0.500	12.7	0.075	1.9	5.00	127	250	1112		100	1000
PLT6EH-NB-C0	21.8	554	0.500	12.7	0.075	1.9	6.00	152	250	1112		100	1000



## Lashing Tie Mounting Clip – Weather Resistant Nylon 6.6

- Greater resistance to damage caused by ultraviolet light – indoor or outdoor use
- Converts Panduit® lashing ties into clamps
- Easily snaps in place for a secure clamp
- Use with lashing ties shown on pages B1.9, B1.11, B1.20, B1.22 and B1.23



Part Number	Height A		Width B		Length C		Mounting Method	Std. Pkg. Qty.	Std. Ctn. Qty.
	In.	mm	In.	mm	In.	mm			
MCEH-S25-C0	0.13	3.3	0.67	17.0	1.38	35	1/4" (M6) screw (not flathead)	100	1000