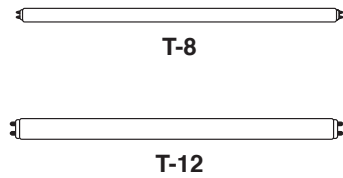


FLUORESCENT LAMPHOLDERS MEDIUM BI-PIN G13 FOR T-8 / T-12 LAMPS

FL011 SERIES



- White polycarbonate body, rated 110°C
- Turn lock type, low profile
- Quick connect push-in wire terminals for 18 AWG solid wire 5/16"
- Two wire ports per terminal for easy harness wiring
- For 0.23" - 0.040" (0.6 mm - 1.0 mm) panel thickness

- Available shunted for use with instant start electronic ballasts; saves time and makes wiring easier
- Many models to choose from
- Rated 660W, 600V, suitable for all new HO lamps
- cCSAus Certified / cULus Listed



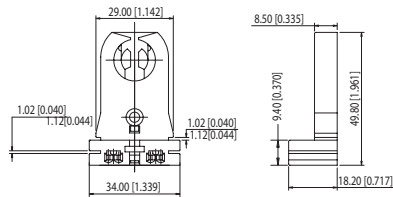
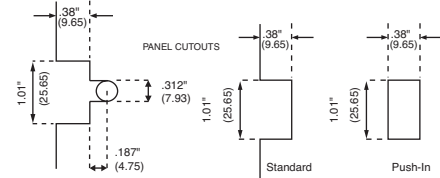
FL011



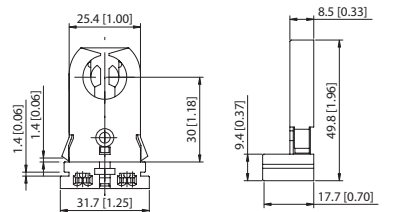
FL011-C



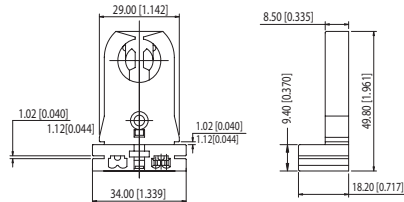
FL011-WS



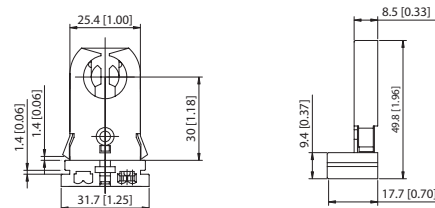
FL011 Solid Shoulder Tall Profile



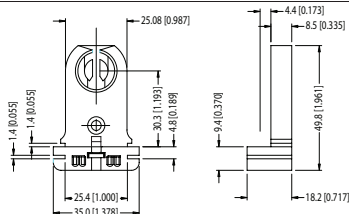
FL011-W Flexible Snap-in Shoulder



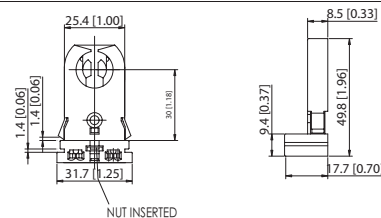
FL011-S Solid Shoulder Shunted



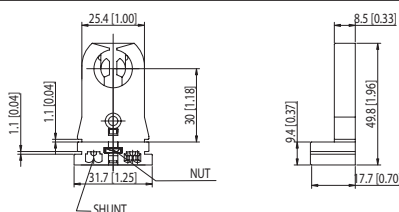
FL011-WS Flexible Snap-in Shoulder Shunted



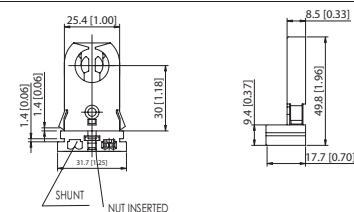
FL011-C Solid Shoulder Captive Nut



FL011-WS Flexible Snap-in Shoulder Captive Nut



FL011-SC Solid Shoulder Shunted Captive Nut



FL011-WSC Flexible Snap-in Shoulder Shunted Captive Nut

* Add "-S" after product code for internal shunted version