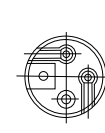


## PHENOLIC/PORCELAIN LAMPHOLDERS KEYLESS, MEDIUM BASE

### IS211 Series Porcelain Keyless Lampholders



IS211



IS211AP

1"  
Base  
Diameter

E-26

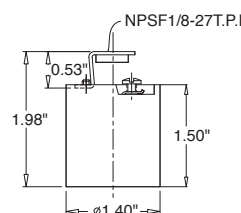


I11

- Unglazed porcelain body with wireways
- Available with deep wire well to meet UL AP requirements, specify part number IS211AP
- Aluminum screw shell is standard, brass or nickel-plated copper available to order
- Standard leads are 18 AWG, EXL 125°C, 12" long, stripped 1/2" or specify desired length and type of wire
- The above series are designed to accommodate a wide variety of hickey or brackets, which can be ordered from the following pages.

- Insulating fibre cover or cap can be attached upon request
- Also available with ground wire
- Many configurations are available, as well as many mounting options
- 660W, 250V
- UL Listed & CSA Certified

### IS211T Series Porcelain Keyless Lampholders With Screw Terminals



AA02100AA

1"  
Base  
Diameter

E-26



Incandescent

- Unglazed porcelain body with wireways
- Aluminum screw shell is standard, brass or nickel-plated copper available to order
- With screw terminals – for wiring
- The above series are designed to accommodate a wide variety of hickey or brackets, which can be ordered from the following pages.

- Insulating fibre cover or cap can be attached upon request
- Many configurations are available, as well as many mounting options
- 660W, 250V
- UL Listed & CSA Certified

Medium  
Base

## PHENOLIC/PORCELAIN LAMPHOLDERS KEYLESS, MEDIUM BASE

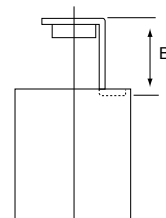
I12

### Hickeys and Brackets For IS201 & IS211 Series

BRACKET NUMBER	B	DESCRIPTION OF MOUNTING HOLE
01	1/2"	1/8" IPS TAP EXTRUSION
01 N	1/2"	1/8" IPS NIPPLE
01 NS	1/2"	1/8" IPS NIPPLE
01 RS	1/2"	1/4" IPS TAP EXTRUSION
01 S	1/2"	1/8" IPS TAP EXTRUSION
02	5/8"	1/8" IPS TAP EXTRUSION
02 N	5/8"	1/8" IPS NIPPLE
02 RS	5/8"	1/4" IPS TAP EXTRUSION
02 S	5/8"	1/8" IPS TAP EXTRUSION
03 RS	11/16"	1/4" IPS TAP EXTRUSION
04	3/4"	1/8" IPS TAP EXTRUSION
04 N	3/4"	1/8" IPS NIPPLE
04 RS	3/4"	1/4" IPS TAP EXTRUSION
04 S	3/4"	1/8" IPS TAP EXTRUSION
05	1"	1/8" IPS TAP EXTRUSION
05 N	1"	1/8" IPS NIPPLE
05 NS	1"	1/8" IPS NIPPLE
05 RN	1"	1/4" IPS NIPPLE
05 RS	1"	1/4" IPS TAP EXTRUSION
06	1-1/4"	1/8" IPS TAP EXTRUSION
06 N	1-1/4"	1/8" IPS NIPPLE
06 RN	1-1/4"	1/4" IPS NIPPLE
06 RS	1-1/4"	1/4" IPS TAP EXTRUSION
07 N	1-3/8"	1/8" IPS NIPPLE
08	1-1/2"	1/8" IPS NIPPLE
08 N	1-1/2"	1/8" IPS NIPPLE
09	1-3/4"	1/8" IPS TAP EXTRUSION
09 N	1-3/4"	1/8" IPS NIPPLE
10	2"	1/8" IPS TAP EXTRUSION
10 S	2"	1/8" IPS TAP EXTRUSION
10 N	2"	1/8" IPS NIPPLE
11	2-1/8"	1/8" IPS TAP EXTRUSION
12	2-1/2"	1/8" IPS TAP EXTRUSION
13	2-3/4"	1/8" IPS TAP EXTRUSION
14	3"	1/8" IPS TAP EXTRUSION
15 N	3-1/2"	1/8" IPS NIPPLE
16 N	7/8"	1/8" IPS NIPPLE
16 S	7/8"	1/8" IPS TAP EXTRUSION
17 S	2-7/32"	1/8" IPS TAP EXTRUSION
18 N	29/64"	1/8" IPS NIPPLE

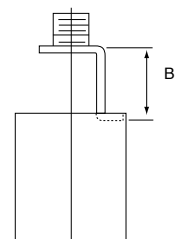
STRAIGHT  
FEMALE  
HICKEY

STYLE 01, 02, 03



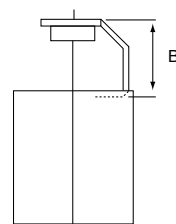
MALE  
NIPPLE  
HICKEY

STYLE 01N, 02N, 03N



SLANTED  
FEMALE  
HICKEY

STYLE 01S, 02S, 03S



Incandescent