

227 Series

CONICAL PLASTIC ANCHORS

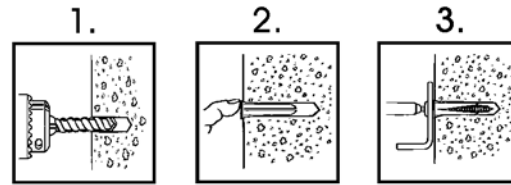
Engineered Plastic Plug - Light Duty Concrete Anchor



Blue or Red Conical Plastic Anchors can be used in concrete, block, brick and wallboard. They are specifically designed for lightweight use only. They are a one piece plug with three slots that don't allow the anchor to spin freely in the hole when tightened. Drill hole to the length of the plug so that it sits flush with the surface. Clean hole of dust after drilling. Tap anchor into the hole with hammer. Position fixture and tighten screw until the threads grip the anchor body.



Also available in selected sizes in Fast-Pac® jars See section 'O'



Load Capacities for Block

Anchor Size	Colour	Depth	Tension (Lbs)	Shear (Lbs)
6-8.	blue	3/4"	180	215
8-10.	red	7/8"	290	235
10-12.	blue	1"	350	280
14-16.	red	1-1/2"	840	530

Load Capacities for Brick

Anchor Size	Colour	Depth	Tension (Lbs)	Shear (Lbs)
6-8.	blue	3/4"	100	230
8-10.	red	7/8"	160	260
10-12.	blue	1"	280	320
14-16.	red	1-1/2"	880	500

Load Capacities for Concrete

Anchor Size	Embedded Depth	2000 psi		4000 psi		6000 psi	
		Tension (lbs)	Shear (lbs)	Tension (lbs)	Shear (lbs)	Tension (lbs)	Shear (lbs)
6-8	3/4"	185	215	210	240	225	240
8-10	7/8"	300	235	440	280	520	280
10-12	1"	350	280	550	350	640	350
14-16	1-1/2"	840	530	840	575	900	575

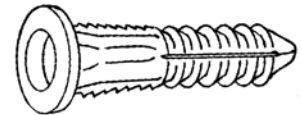
LIST PRICE PER 100 PIECES

Size No.	Shield Diameter and Length	CASE 227	Pkg Qty	Case Qty	BULK B227	Bulk Qty	Approx. Wt. 100 Pcs.	Hole Drill Size
-046	6-8x3/4		100	2700		6500	.05	.188
-048	8-10x7/8		100	2700		5000	.06	.188
-050	10-12x1		100	2700		5000	.12	.250
-054	14-16x1-3/8		50	1100		2500	.27	.313

227 Series

YELLOW PLASTIC ANCHORS

Engineered Plastic Plug - Light Duty Hollow Wall Anchor



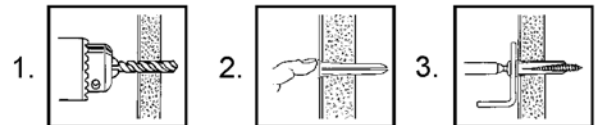
Yellow Plastic Anchors are designed for hollow wall application in drywall. Used only for lightweight applications where holding strength is not critical. It has a one piece body with two horizontal slits which open to allow grip to the outside walls of the hole. It should not be used for overhead. Drill hole to the minimum depth required. Clean hole of dust after drilling. Insert anchor through the fixture and tap the anchor until it is flush with the surface of the material. Insert the proper size screw into the anchor and tighten until fixture is securely fastened.



Also available in selected sizes in Fast-Pac® jars See section 'O'

Load Capacities for Drywall

Anchor Size	Depth	Tension (Lbs)	Shear (Lbs)
6-8.	1"	180	215
8-12.	1-1/4"	290	235
12-14.	1-1/2"	350	280



LIST PRICE PER 100 PIECES

Size No.	Shield Diameter and Length	CASE 227	Pkg Qty	Case Qty	BULK B227	Bulk Qty	Approx. Wt. 100 Pcs.	Hole Drill Size
-609	6-8x1		100	2700		7000	.08	.188
-610	8-12x1-1/4		100	2200		4000	.14	.250
-613	12-14x1-1/2		100	1600		2000	.23	.313