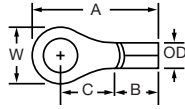


TYPE 9 HIGH TEMPERATURE TERMINALS



One piece, steel construction, nickel plated for protection. Capable of providing reliable circuitry in temperature ranges up to 900 degrees Fahrenheit. Structural features of all Type 9 terminals are identical to the Type 1, which proves that they will provide the highest quality connection.

B

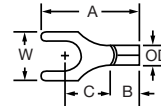
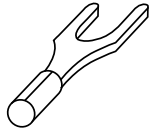
RING TERMINALS

BUTTED SEAM

Rated at 600V

Part #	Copper Cond. Range	Stud Size	Stock Size (in)	Approx. Dimen. in Inches				
				A	W	C	B	OD
R9A6S	22-18	6	.028	.66	.290	.260	.250	.133
R9A8	22-18	8	.028	.66	.324	.250	.250	.133
R9A10	22-18	10	.028	.66	.324	.250	.250	.133
R9A14S	22-18	1/4	.028	.89	.470	.405	.250	.133
R9B6S	16-14	6	.030	.66	.295	.260	.250	.152
R9B8	16-14	8	.030	.71	.324	.295	.250	.152
R9B10	16-14	10	.030	.71	.340	.295	.250	.152
R9B14S	16-14	1/4	.030	.89	.470	.405	.250	.152
R9C6S	12-10	6	.038	.72	.342	.297	.250	.217
R9C8	12-10	8	.038	.72	.342	.297	.250	.217
R9C10	12-10	10	.038	.72	.342	.297	.250	.217
R9C14S	12-10	1/4	.038	.99	.558	.469	.250	.217
R9C56	12-10	5/16	.038	.99	.558	.469	.250	.217
R9C38	12-10	3/8	.038	.99	.558	.469	.250	.217

For use with Copper Solid and Stranded Wire Only



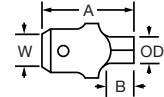
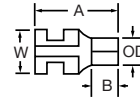
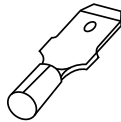
SPADE TERMINALS

BUTTED SEAM

Rated at 600V

S9A10	22-18	10	.028	.73	.312	.321	.250	.070
S9B10	16-14	10	.030	.73	.344	.303	.250	.090
S9C10	12-10	10	.038	.72	.350	.294	.250	.130

For use with Copper Solid and Stranded Wire Only



MALE AND FEMALE DISCONNECTS

BUTTED SEAM

Rated at 600V

Part #	Copper Cond. Range	Stock Size (in)	A	W	B	OD
FR9B250	16-14	.032 x .250	.65	.300	.250	.133
MT9B250	16-14	.032 x .250	.69	.250	.250	.152
FR9C250	12-10	.032 x .250	.66	.300	.250	.175
MT9C250	12-10	.032 x .250	.705	.250	.250	.217

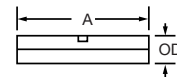
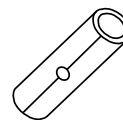
For use with Copper Stranded Wire Only

BUTT CONNECTORS

BUTTED SEAM

Rated at 600V

Part #	Copper Cond. Range	A	OD
B9A	22-18	.560	.133
B9B	16-14	.560	.152
B9C	12-10	.625	.212



For use with Copper Solid and Stranded Wire Only

Add Suffix "M" for 1000 pack

Standard Pack - 100 pack

Installing Tools (22-10AWG): RAT-NINS, HTS1000, 453, RHT-1992