

# Standard Conduit Locknuts

## Type L-D

### Die Cast

#### Use:

For securing threaded conduit or connectors with tapered or straight thread to a knockout or unthreaded slip hole.

#### Features:

- Single cast thread eliminates cross-threading.
- UL Listed as a fittings locknut and stand alone rigid conduit locknut.
- UL Listed 514B for grounding for fittings and rigid conduit.
- Meets or exceeds UL requirements for pull through force on all sizes.
- All locknuts are symmetrical and can be assembled from either side.
- Conical flange on either side enters the knockout creating a 360° ground path.

#### Material/Finish:

Zinc Die Cast

#### Third Party Certification:



#### Applicable Third Party Standards:

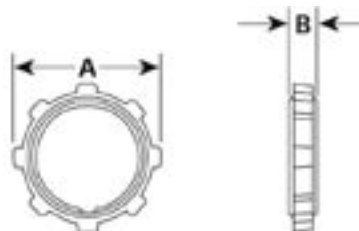
UL Standard: 514B

NEMA: FB-1

Trade Size (inches)	Catalog Number	Dimensions in Inches	
		A	B
½	L-100-D	1.12	0.19
¾	L-200-D	1.39	0.19
1	L-300-D	1.72	0.17
1¼	L-400-D	2.08	0.17
1½	L-500-D	2.32	0.18
2	L-600-D	2.98	0.18
2½	L-700-D	3.43	0.30
3	L-800-D	4.07	0.31
3½	L-900-D	4.62	0.31
4	L-1000-D	5.25	0.31



Type L-100-D



## Type L

### Steel

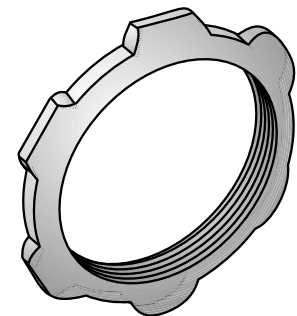
#### Use:

Conduit locknuts for securing threaded conduit or connectors with tapered or straight thread, to a knockout or unthreaded slip hole.

#### Material/Finish:

Steel/Zinc Plated

Trade Size (inches)	Catalog Number	Dimensions in Inches	
		A	B
½	L-100	1.13	0.13
¾	L-200	1.40	0.13
1	L-300	1.72	0.15
1¼	L-400	2.08	0.15
1½	L-500	2.40	0.16
2	L-600	2.90	0.17
2½	L-700	3.48	0.19
3	L-800	4.13	0.18
3½	L-900	4.70	0.20
4	L-1000	5.32	0.20
5	L-1100	6.38	0.42
6	L-1200	7.75	0.43



Type L-100

